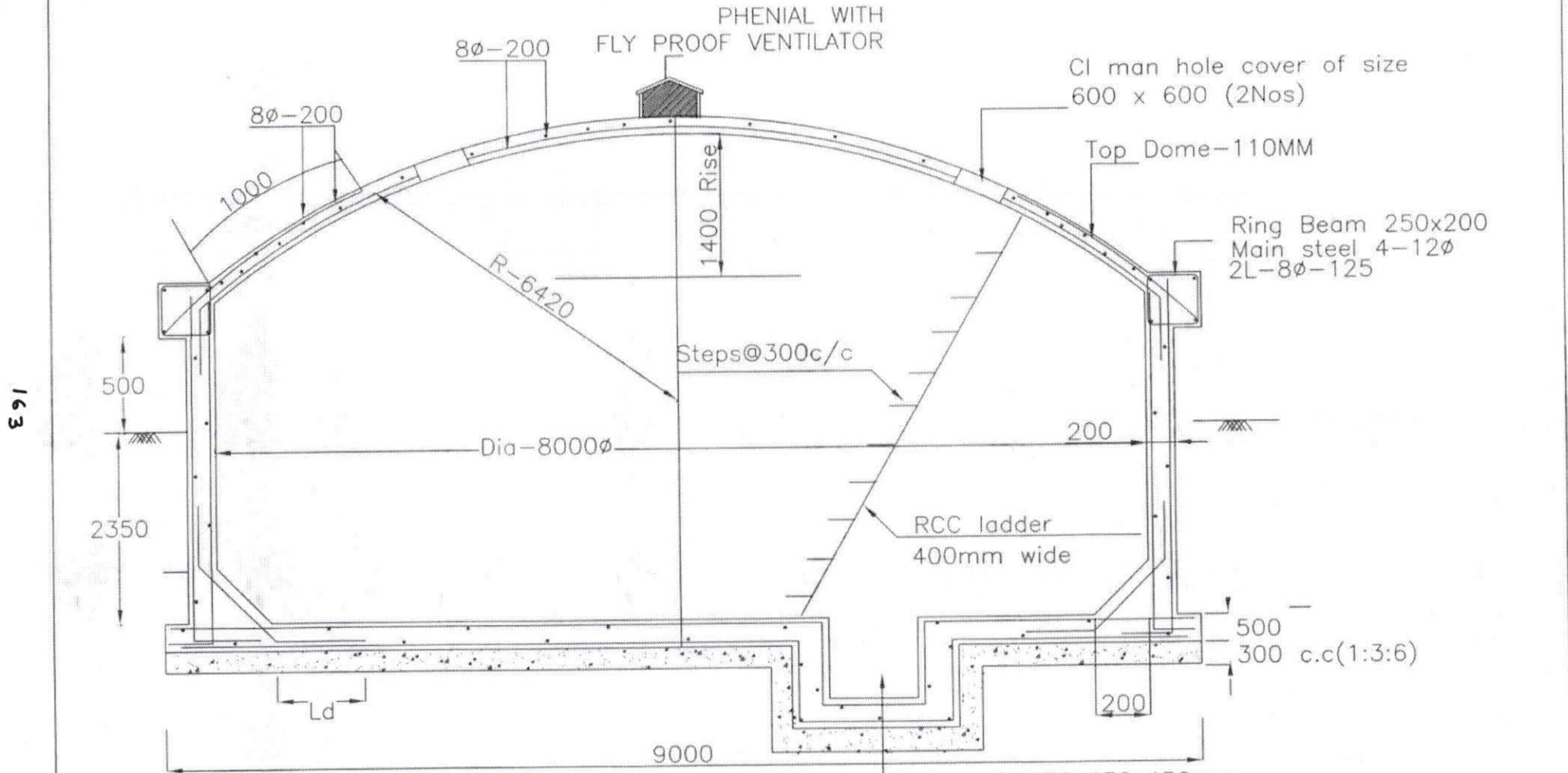


120 KL SUMP



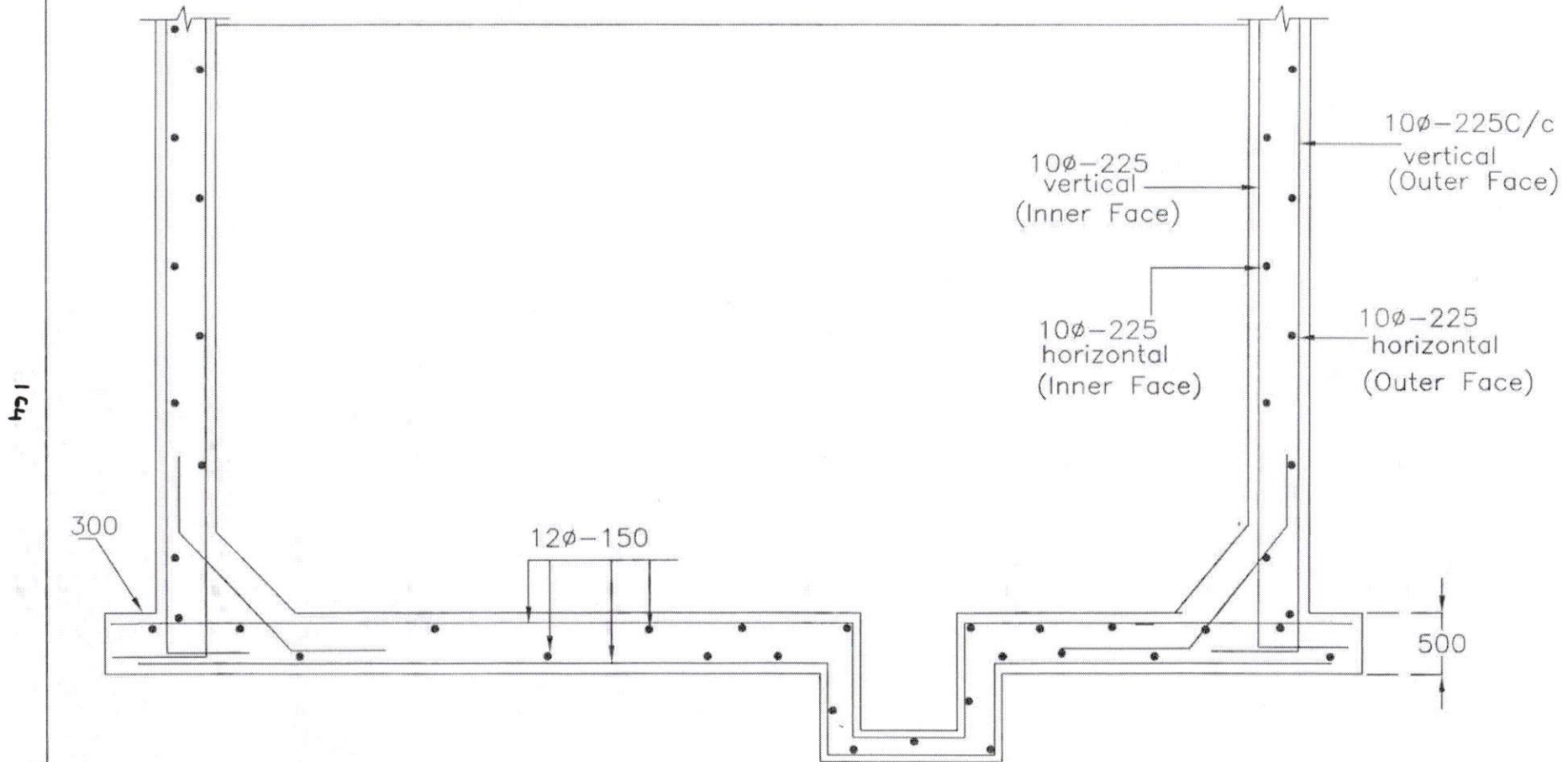
All dimensions are in 'mm'
 Concrete mix V.R.C.C M30
 Steel Fe-415
 Reinforcement Details shall be as per IS - SP34

Asst Executive Engineer
 Dy. Executive Engineer
 Chief Engineer-II
 RWS&S, Gollapudi
 Vijayawada.

Sump is designed for uplift

| |
|----------|
| SCHEME: |
| DWG.NO.1 |

120 KL SUMP



SBC OF SOIL $\geq 5T/sqm$
Note: provide sand bed as per site conditions
and verify the uplift condition before grounding
the work, if depth of water table $< 1.0m$ below GL

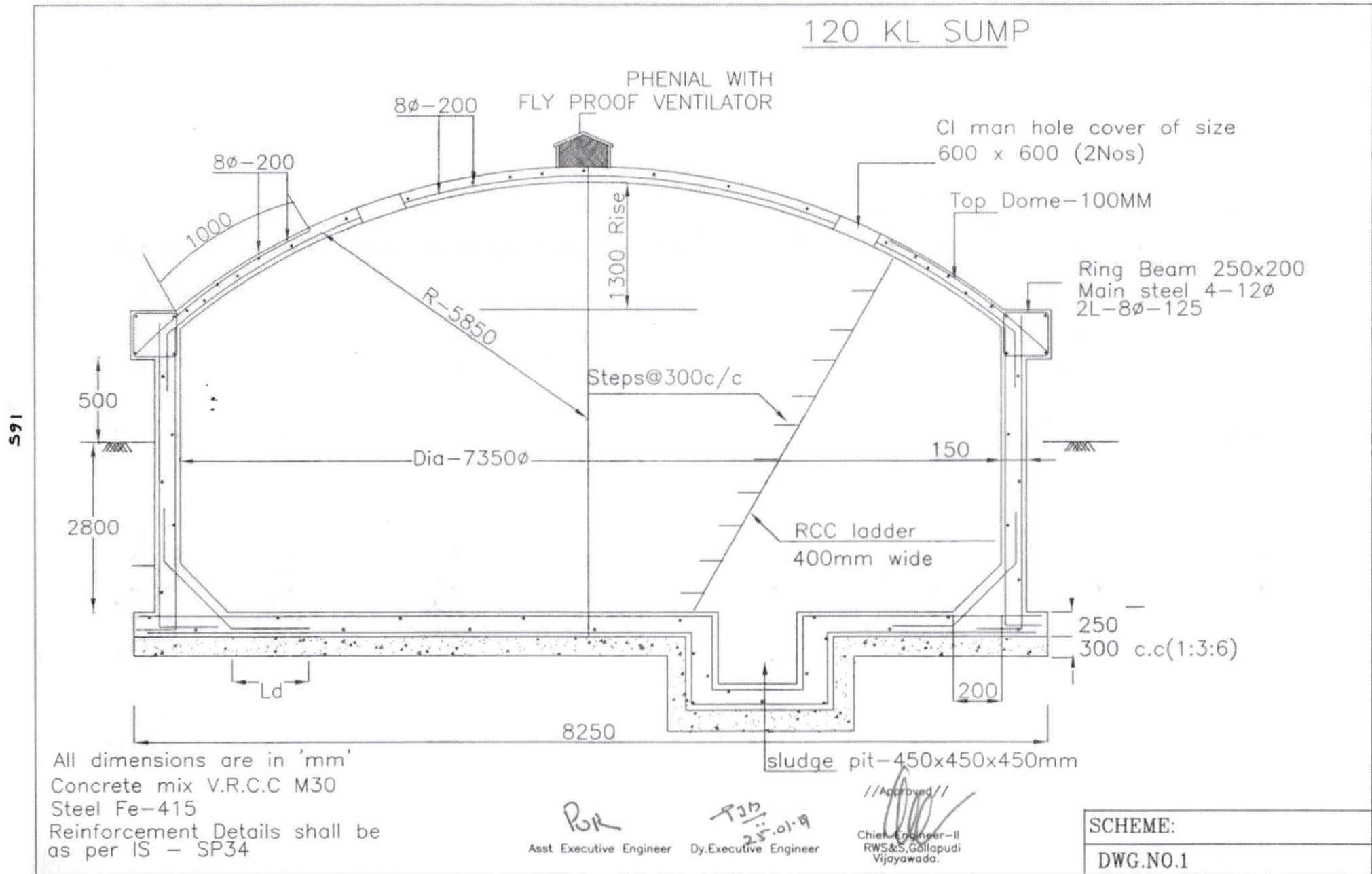
POK
Asst Executive Engineer

ROM
25.01.19
Dy. Executive Engineer

// Approved //
[Signature]
Chief Engineer-II
RWS&S, Gollapudi
Vijayawada.

| |
|----------|
| SCHEME: |
| DWG.NO.2 |

120 KL SUMP



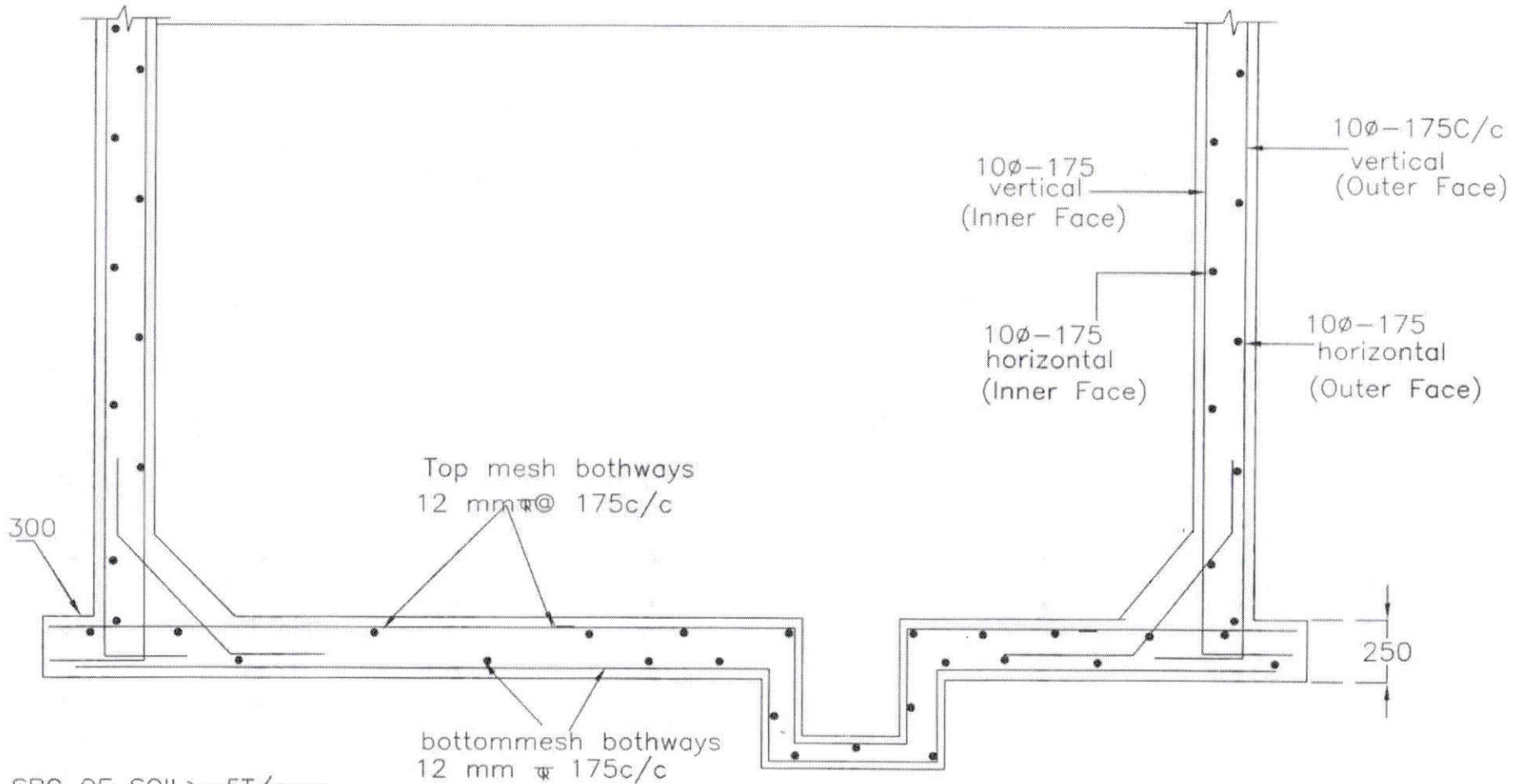
All dimensions are in 'mm'
Concrete mix V.R.C.C M30
Steel Fe-415
Reinforcement Details shall be as per IS - SP34

RGR
Asst Executive Engineer
Dy. Executive Engineer

// Approved //
Chief Engineer-II
RWS&S, Gollapudi
Vijayawada.

| |
|----------|
| SCHEME: |
| DWG.NO.1 |

120 KL SUMP



166

SBC OF SOIL $\geq 5T/sqm$
Note: provide sand bed as per site conditions
and verify the uplift condition before grounding
the work, if depth of water table $< 1.75m$ below GL

RBR
Asst Executive Engineer

25.01.14
Dy. Executive Engineer

Approved
Chief Engineer-II
RWS&S, Gollapudi
Vijayawada.

| |
|----------|
| SCHEME: |
| DWG.NO.2 |