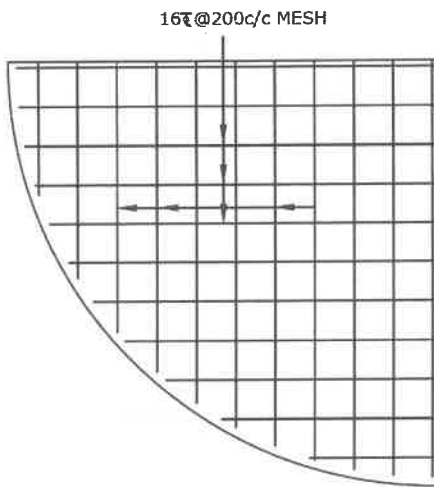
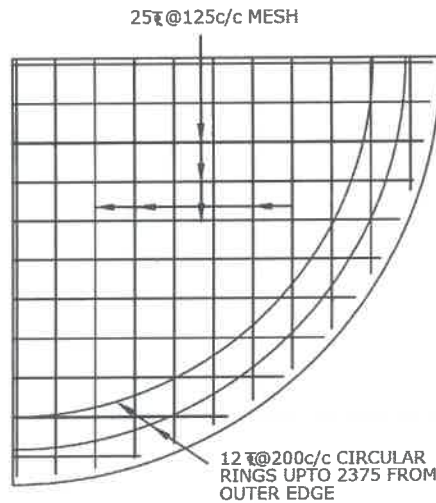


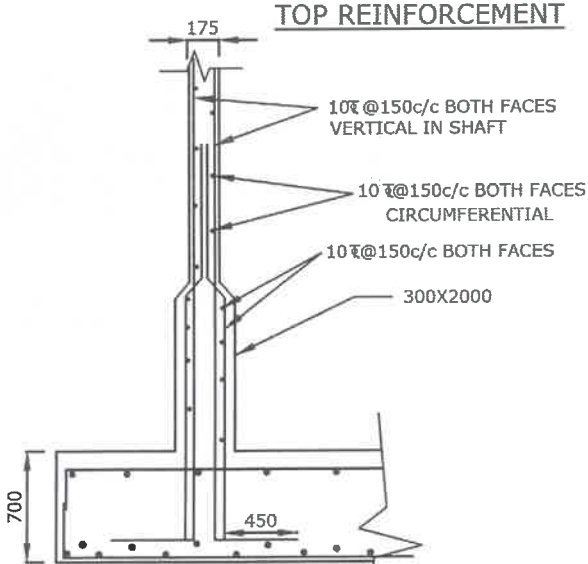
SECTIONAL ELEVATION OF RAFT



TOP REINFORCEMENT



BOTTOM REINFORCEMENT



DETAIL 'P'

NOTE:

1. GRADE OF CONCRETE : M30
2. GRADE OF STEEL : Fe415
3. BASIC WIND SPEED : 150 KMPH
4. S.B.C. OF SOIL : 5.0 t/m²
5. DEPTH OF FOUNDATION : 2.5m BELOW GROUND LEVEL UPTO TOP OF RAFT
6. FOR DETAILING OF REINFORCEMENT IS SP-34 SHALL BE FOLLOWED
7. PROVISIONS GIVEN IN IS 456-2000, IS 3370(PART-IV) SHALL BE FOLLOWED
8. PROVIDE SAND FILLING AS PER SITE CONDITION

SCHEME:

150KL-OHBR-25.0M STG

SBC SOIL: 5.0T/M²

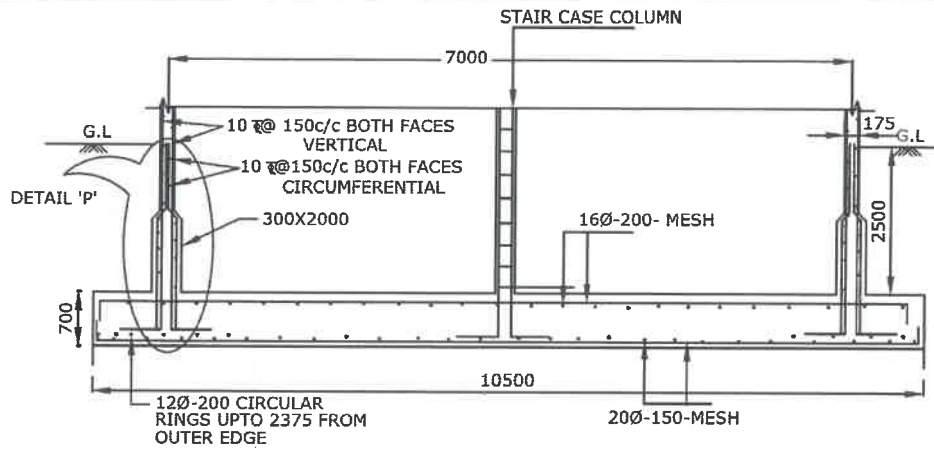
//Approved//

Chief Engineer-II
RWS&S, Gollapudi
Vijayawada.

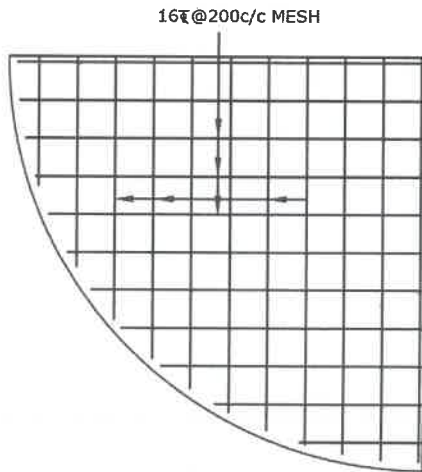
AEE

DEE

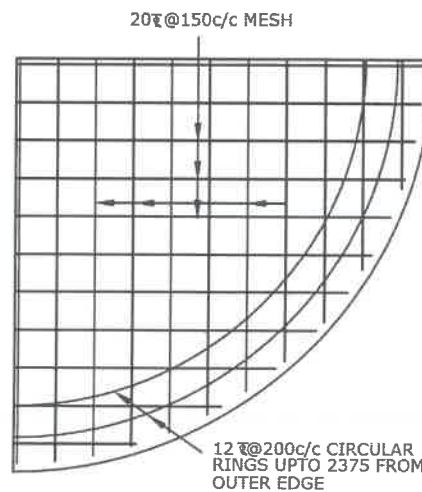
EE



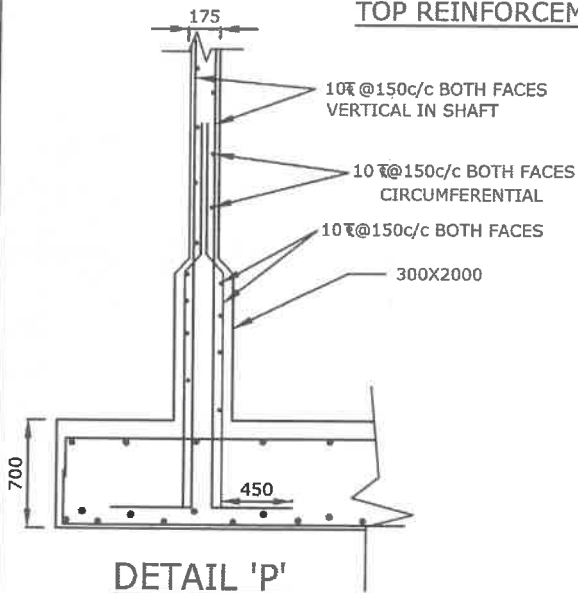
SECTIONAL ELEVATION OF RAFT



TOP REINFORCEMENT



BOTTOM REINFORCEMENT



DETAIL 'P'

NOTE:

1. GRADE OF CONCRETE : M30
2. GRADE OF STEEL : Fe415
3. BASIC WIND SPEED : 150 KMPH
4. S.B.C. OF SOIL : 10.0 t/m²
5. DEPTH OF FOUNDATION : 2.5m BELOW GROUND LEVEL UPTO TOP OF RAFT
6. FOR DETAILING OF REINFORCEMENT IS SP-34 SHALL BE FOLLOWED
7. PROVISIONS GIVEN IN IS 456-2000, IS 3370(PART-IV) SHALL BE FOLLOWED
8. PROVIDE SAND FILLING AS PER SITE CONDITION

AEE

DEE

EE

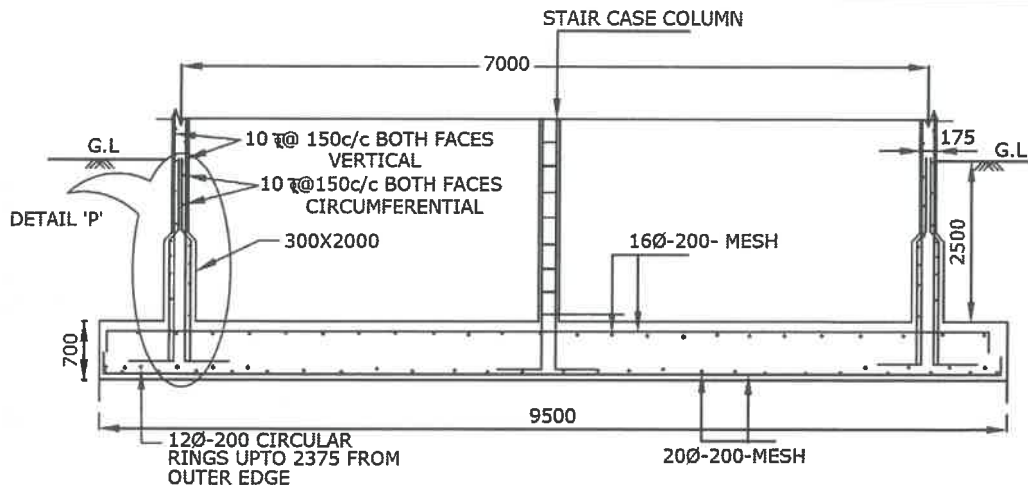
//Approved//

Chief Engineer-II
RWS&S, Gollapudi
Vijayawada.

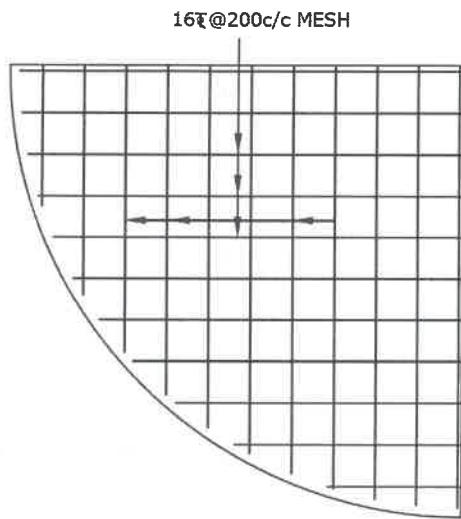
SCHEME:

150KL-OHBR-25.0M STG

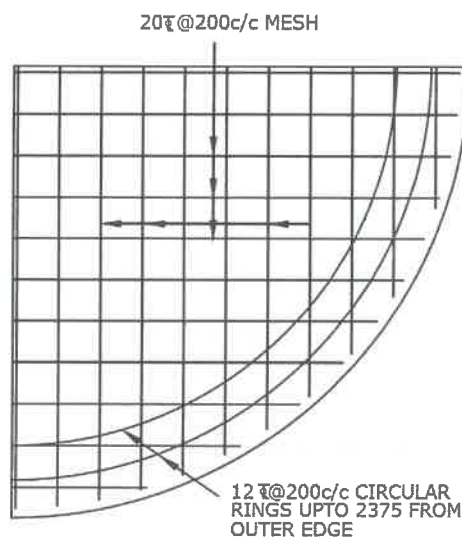
SBC SOIL: 10.0T/M²



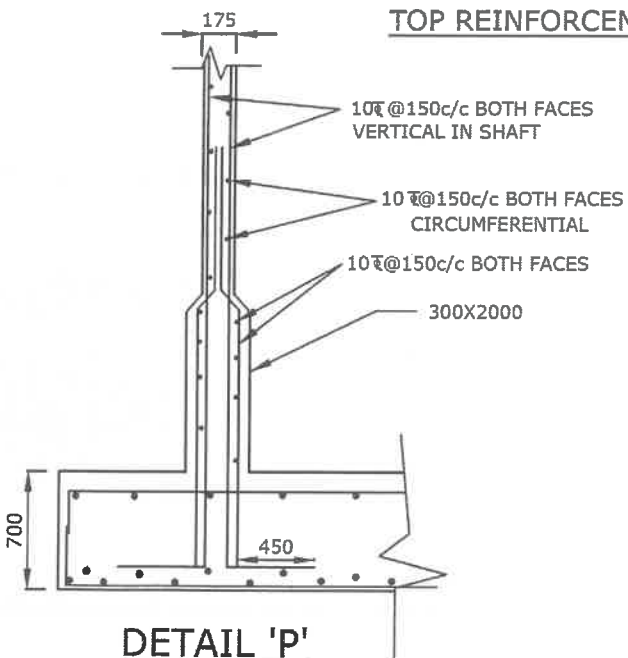
SECTIONAL ELEVATION OF RAFT



TOP REINFORCEMENT



BOTTOM REINFORCEMENT



DETAIL 'P'

NOTE:

1. GRADE OF CONCRETE : M30
2. GRADE OF STEEL : Fe415
3. BASIC WIND SPEED : 150 KMPH
4. S.B.C. OF SOIL : 15.0 t/m²
5. DEPTH OF FOUNDATION : 2.5m BELOW GROUND LEVEL UPTO TOP OF RAFT
6. FOR DETAILING OF REINFORCEMENT IS SP-34 SHALL BE FOLLOWED
7. PROVISIONS GIVEN IN IS 456-2000, IS 3370(PART-IV) SHALL BE FOLLOWED
8. PROVIDE SAND FILLING AS PER SITE CONDITION

AEE
AEE

DEE
DEE

EE
EE

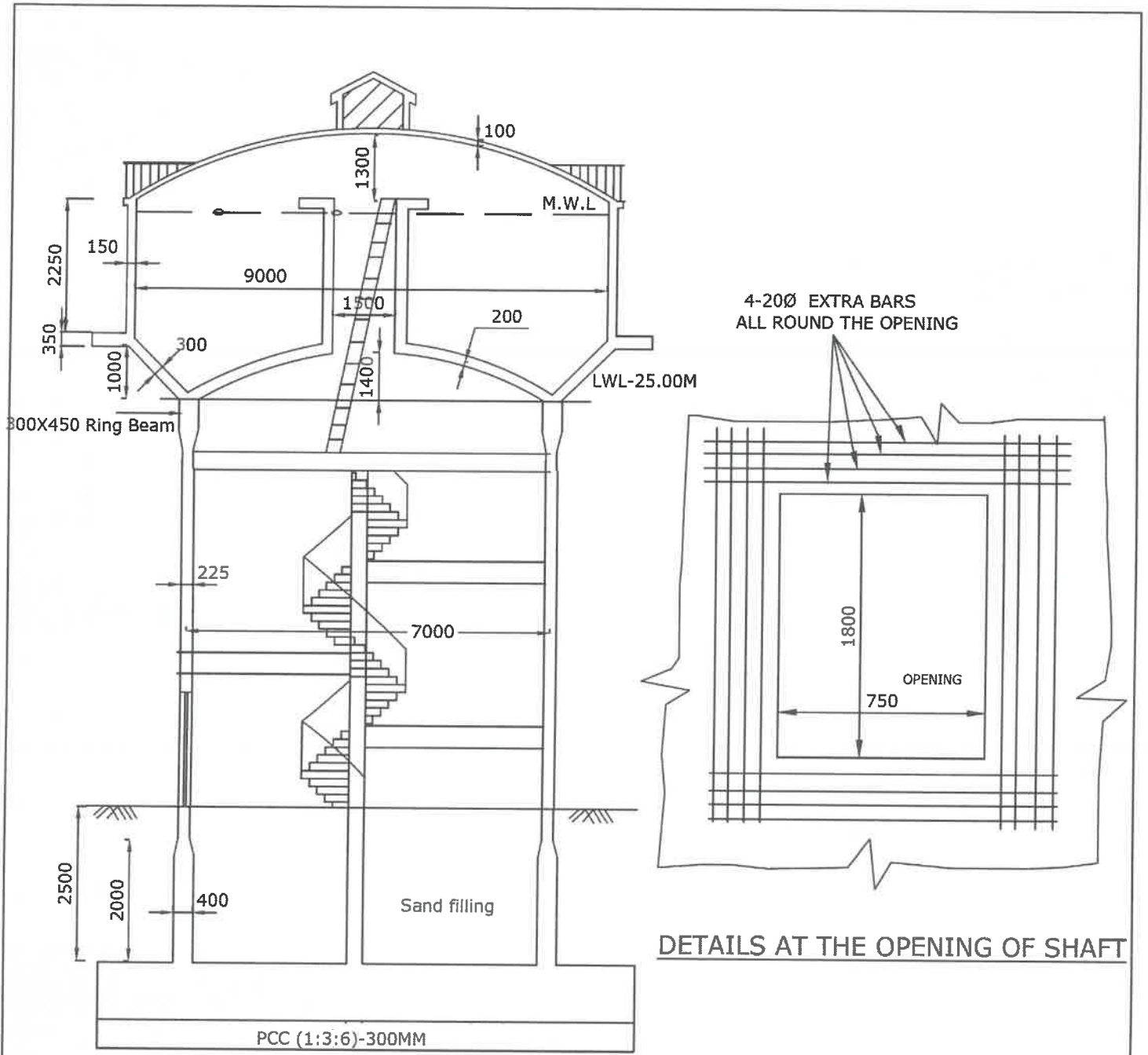
//Approved//

Chief Engineer-II
RWS&S, Gollapudi
Vijayawada.

SCHEME:

150KL-OHBR-25.0M STG

SBC SOIL: 15.0T/M²



DETAILS AT THE OPENING OF SHAFT

Wind Speed: 200KMPH

AEE
AEE

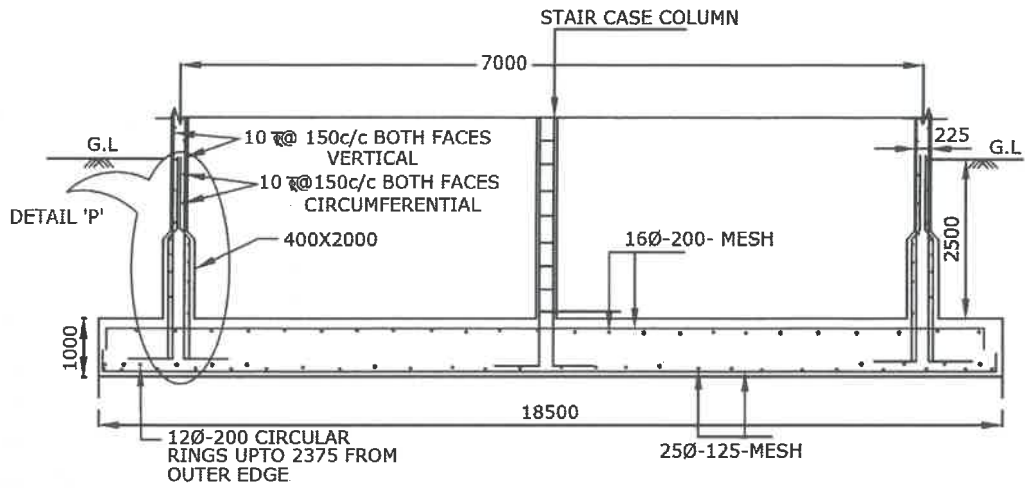
DEE
DEE

EE
EE

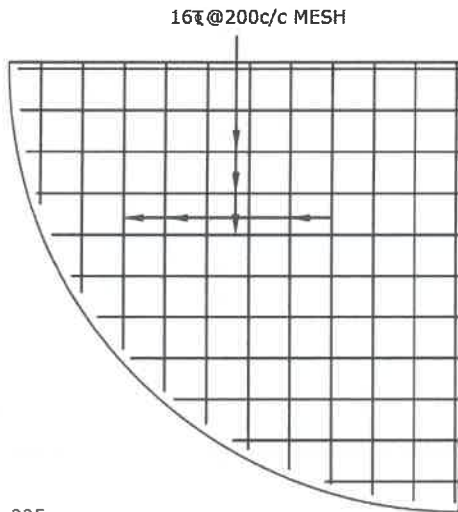
//Approved//

Chief Engineer-II
Chief Engineer-II
RWS&S, Gollapudi
Vijayawada.

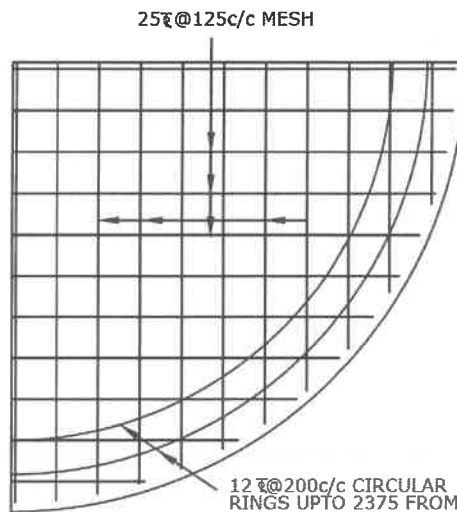
SCHEME:
150 K.L OHBR
25M STAGING



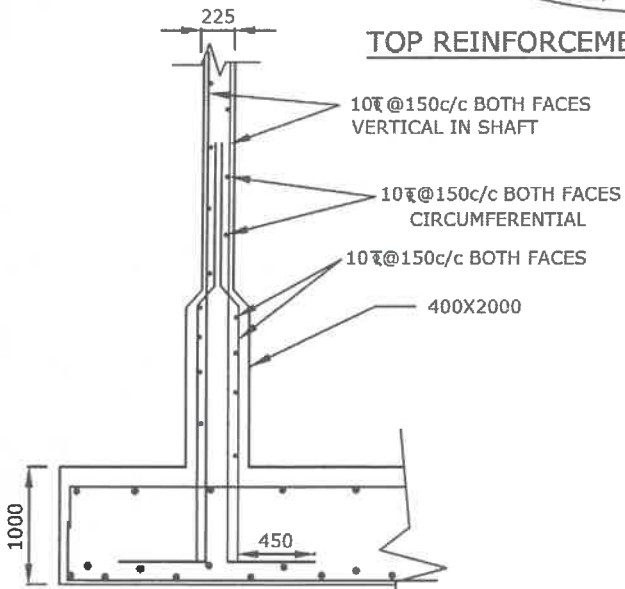
SECTIONAL ELEVATION OF RAFT



TOP REINFORCEMENT



BOTTOM REINFORCEMENT



DETAIL 'P'

NOTE:

1. GRADE OF CONCRETE : M30
2. GRADE OF STEEL : Fe415
3. BASIC WIND SPEED : 200 KMPH
4. S.B.C. OF SOIL : 5.0 t/m²
5. DEPTH OF FOUNDATION : 2.5m BELOW GROUND LEVEL UPTO TOP OF RAFT
6. FOR DETAILING OF REINFORCEMENT IS SP-34 SHALL BE FOLLOWED
7. PROVISIONS GIVEN IN IS 456-2000, IS 3370(PART-IV) SHALL BE FOLLOWED
8. PROVIDE SAND FILLING AS PER SITE CONDITION

AEE

DEE

EE

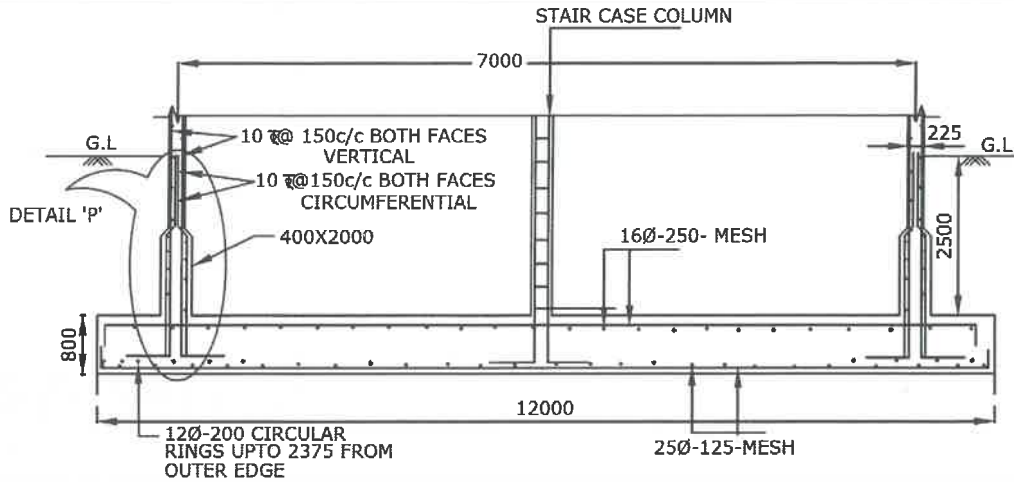
//Approved//

*Chief Engineer-II
RWS&S, Gollapudi
Vijayawada.*

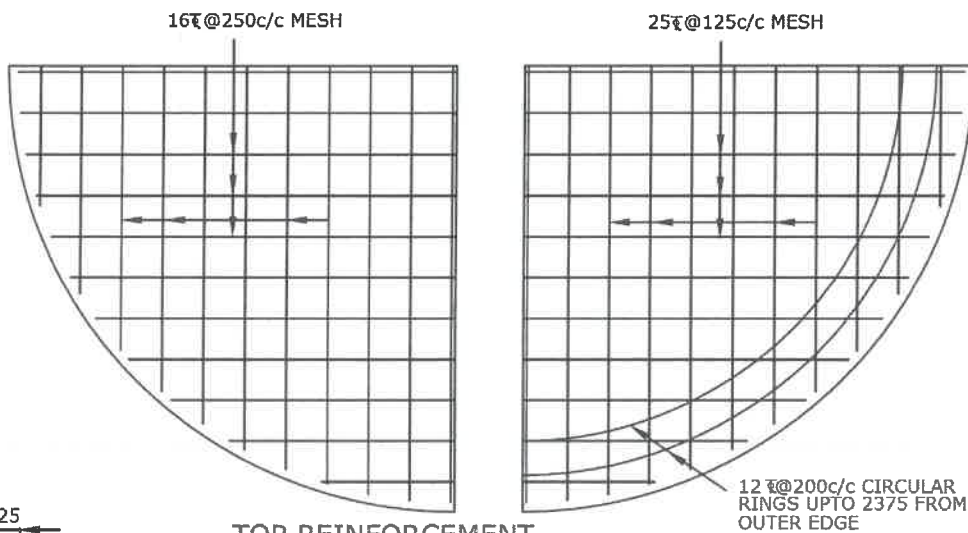
SCHEME:

150KL-OHBR-25.0M STG

SBC SOIL: 5.0T/M²

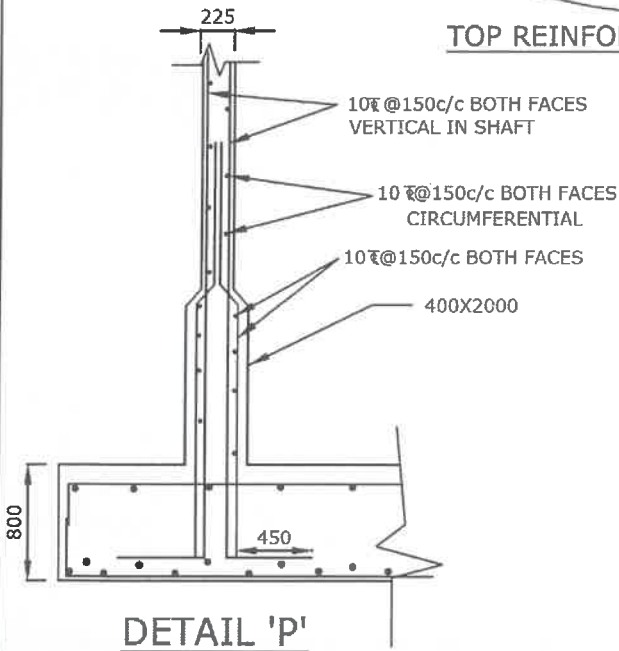


SECTIONAL ELEVATION OF RAFT



TOP REINFORCEMENT

BOTTOM REINFORCEMENT



DETAIL 'P'

NOTE:

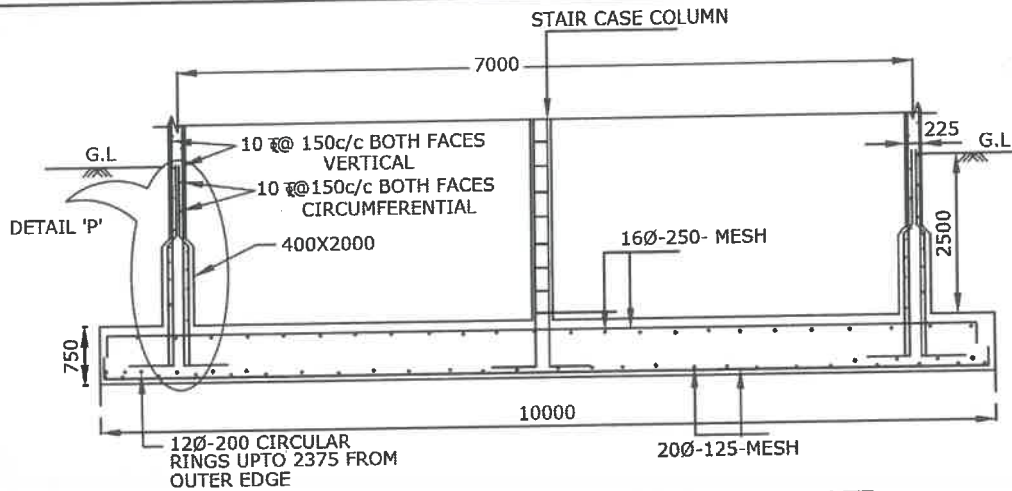
1. GRADE OF CONCRETE : M30
2. GRADE OF STEEL : Fe415
3. BASIC WIND SPEED : 200 KMPH
4. S.B.C. OF SOIL : 10.0 t/m²
5. DEPTH OF FOUNDATION : 2.5m BELOW GROUND LEVEL UPTO TOP OF RAFT
6. FOR DETAILING OF REINFORCEMENT IS SP-34 SHALL BE FOLLOWED
7. PROVISIONS GIVEN IN IS 456-2000, IS 3370(PART-IV) SHALL BE FOLLOWED
8. PROVIDE SAND FILLING AS PER SITE CONDITION

 AEE
 DEE
 EE

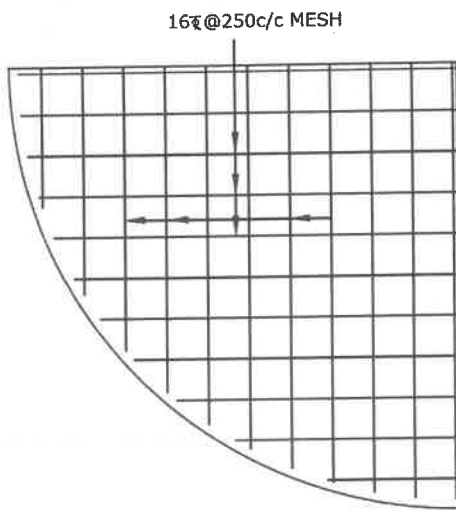
//Approved//

 Chief Engineer-II
 RWS&S, Gollapudi
 Vijayawada.

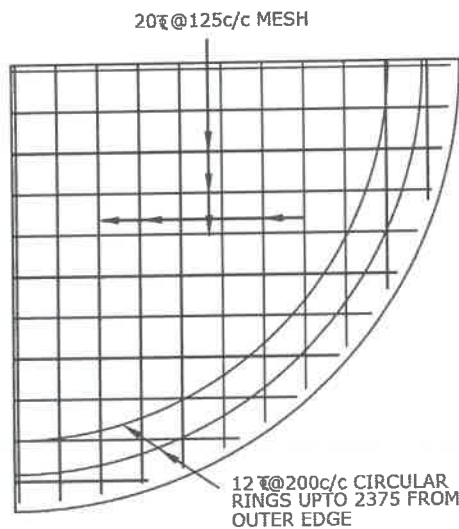
SCHEME:
150KL-OHBR-25.0M STG
SBC SOIL: 10.0T/M²



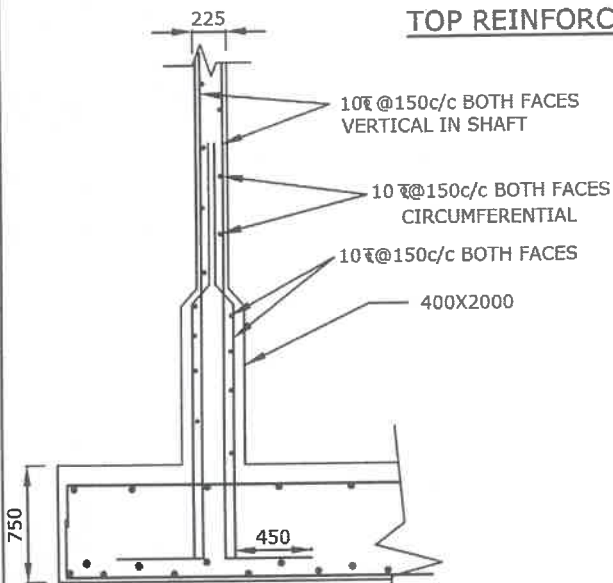
SECTIONAL ELEVATION OF RAFT



TOP REINFORCEMENT



BOTTOM REINFORCEMENT



DETAIL 'P'

NOTE:

1. GRADE OF CONCRETE : M30
2. GRADE OF STEEL : Fe415
3. BASIC WIND SPEED : 200 KMPH
4. S.B.C. OF SOIL : 15.0 t/m²
5. DEPTH OF FOUNDATION : 2.5m BELOW GROUND LEVEL UP TO TOP OF RAFT
6. FOR DETAILING OF REINFORCEMENT IS SP-34 SHALL BE FOLLOWED
7. PROVISIONS GIVEN IN IS 456-2000, IS 3370(PART-IV) SHALL BE FOLLOWED
8. PROVIDE SAND FILLING AS PER SITE CONDITION

SCHEME:

150KL-OHBR-25.0M STG

SBC SOIL: 15.0T/M²

//Approved//

Chief Engineer-II
RWS&S, Gollapudi
Vijayawada.

AEE

DEE

EE