

Wind Speed:150KMPH

*AE*  
AEE

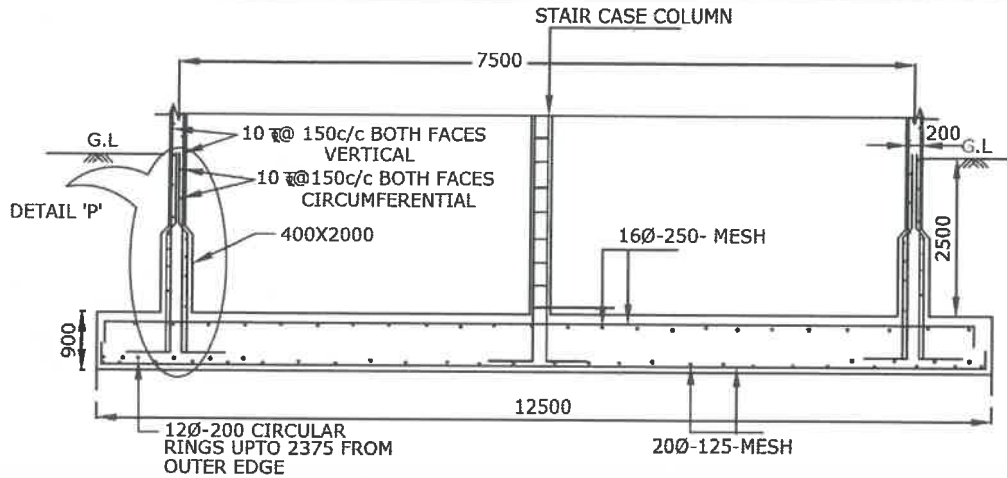
*DE*  
DEE

*EE*  
EE

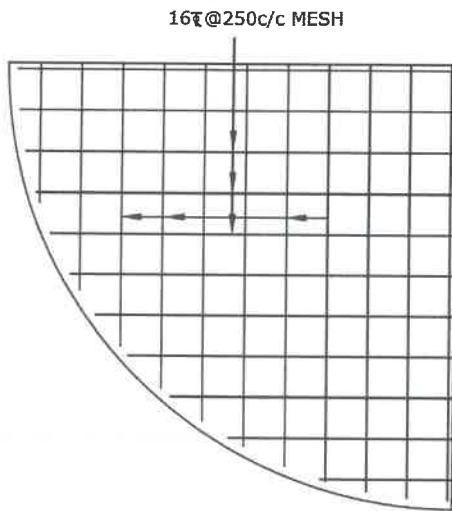
//Approved//  
*PE*  
Chief Engineer-II  
RWS&S, Gollapudi  
Vijayawada.

<b>SCHEME:</b>
250 K.L OHBR
25M STAGING

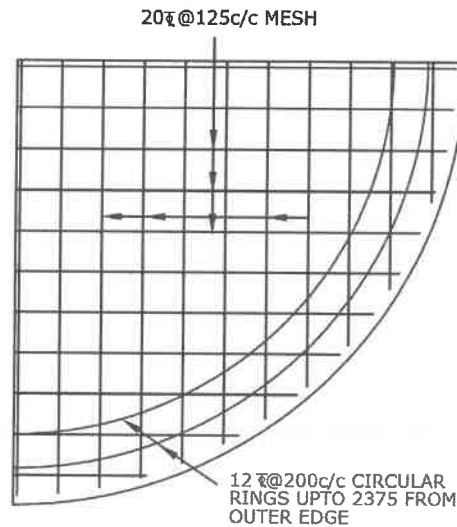




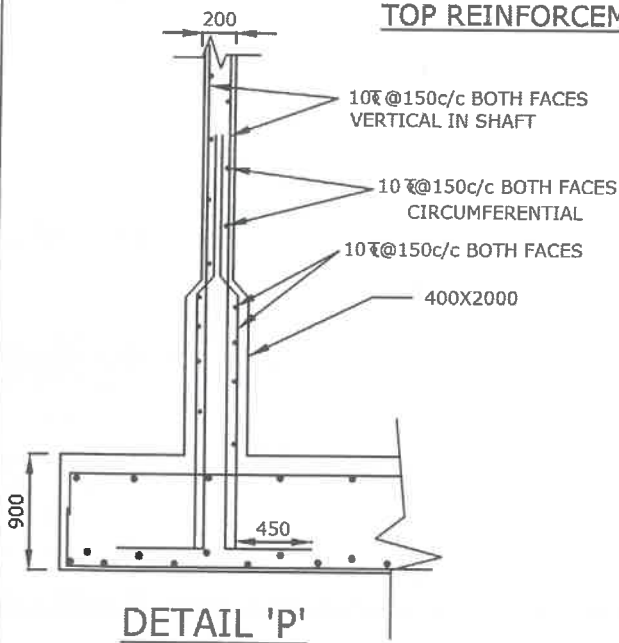
**SECTIONAL ELEVATION OF RAFT**



**TOP REINFORCEMENT**



**BOTTOM REINFORCEMENT**



**DETAIL 'P'**

**NOTE:**

1. GRADE OF CONCRETE : M30
2. GRADE OF STEEL : Fe415
3. BASIC WIND SPEED : 150 KMPH
4. S.B.C. OF SOIL : 10.0 t/m<sup>2</sup>
5. DEPTH OF FOUNDATION : 2.5m BELOW GROUND LEVEL UPTO TOP OF RAFT
6. FOR DETAILING OF REINFORCEMENT IS SP-34 SHALL BE FOLLOWED
7. PROVISIONS GIVEN IN IS 456-2000, IS 3370(PART-IV) SHALL BE FOLLOWED
8. PROVIDE SAND FILLING AS PER SITE CONDITION

 AEE  
 DEE  
 EE

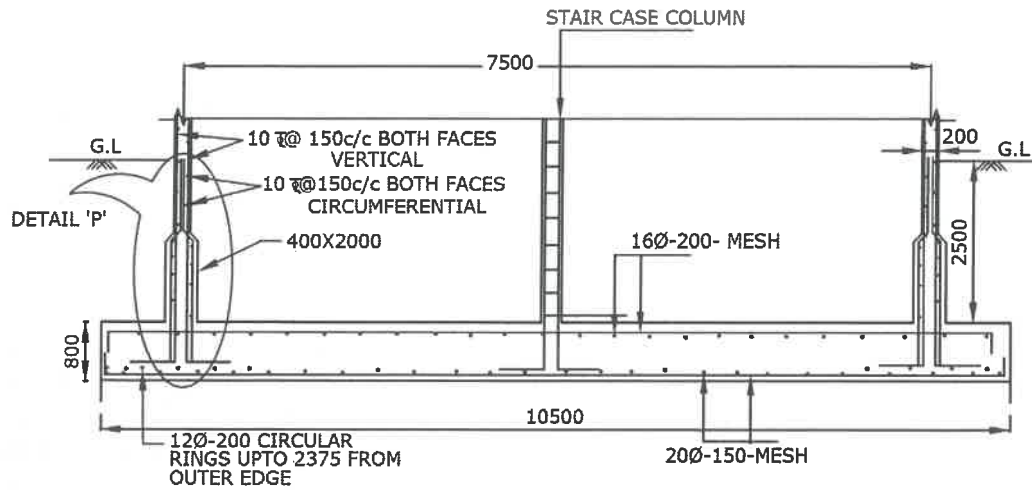
//Approved//

  
 Chief Engineer-II  
 RWS&S, Gollapudi  
 Vijayawada.

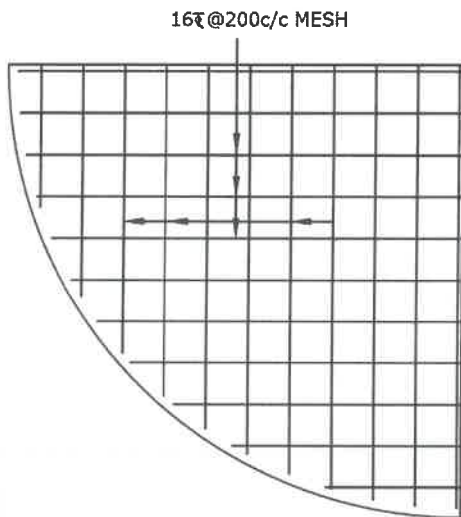
**SCHEME:**

250KL-OHBR-25.0M STG

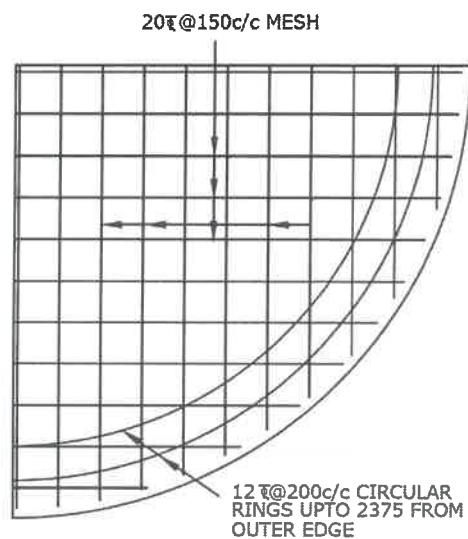
SBC SOIL: 10.0T/M<sup>2</sup>



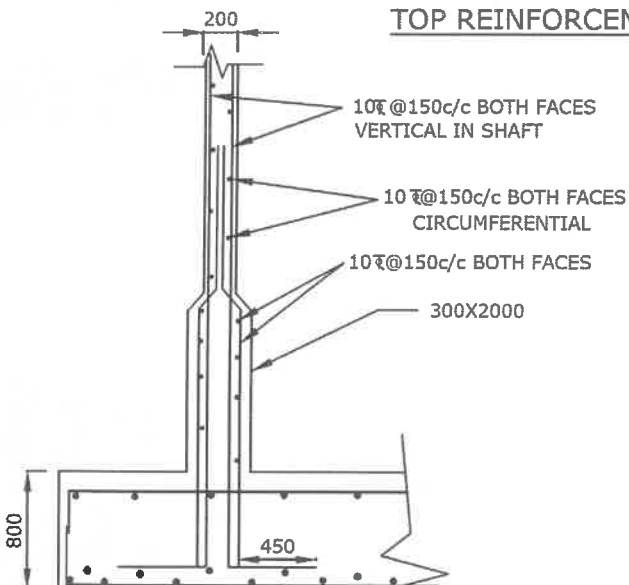
**SECTIONAL ELEVATION OF RAFT**



**TOP REINFORCEMENT**



**BOTTOM REINFORCEMENT**



**DETAIL 'P'**

**NOTE:**

1. GRADE OF CONCRETE : M30
2. GRADE OF STEEL : Fe415
3. BASIC WIND SPEED : 150 KMPH
4. S.B.C. OF SOIL : 15.0 t/m<sup>2</sup>
5. DEPTH OF FOUNDATION : 2.5m BELOW GROUND LEVEL UPTO TOP OF RAFT
6. FOR DETAILING OF REINFORCEMENT IS SP-34 SHALL BE FOLLOWED
7. PROVISIONS GIVEN IN IS 456-2000, IS 3370(PART-IV) SHALL BE FOLLOWED
8. PROVIDE SAND FILLING AS PER SITE CONDITION

**SCHEME:**

250KL-OHBR-25.0M STG

SBC SOIL: 15.0T/M<sup>2</sup>

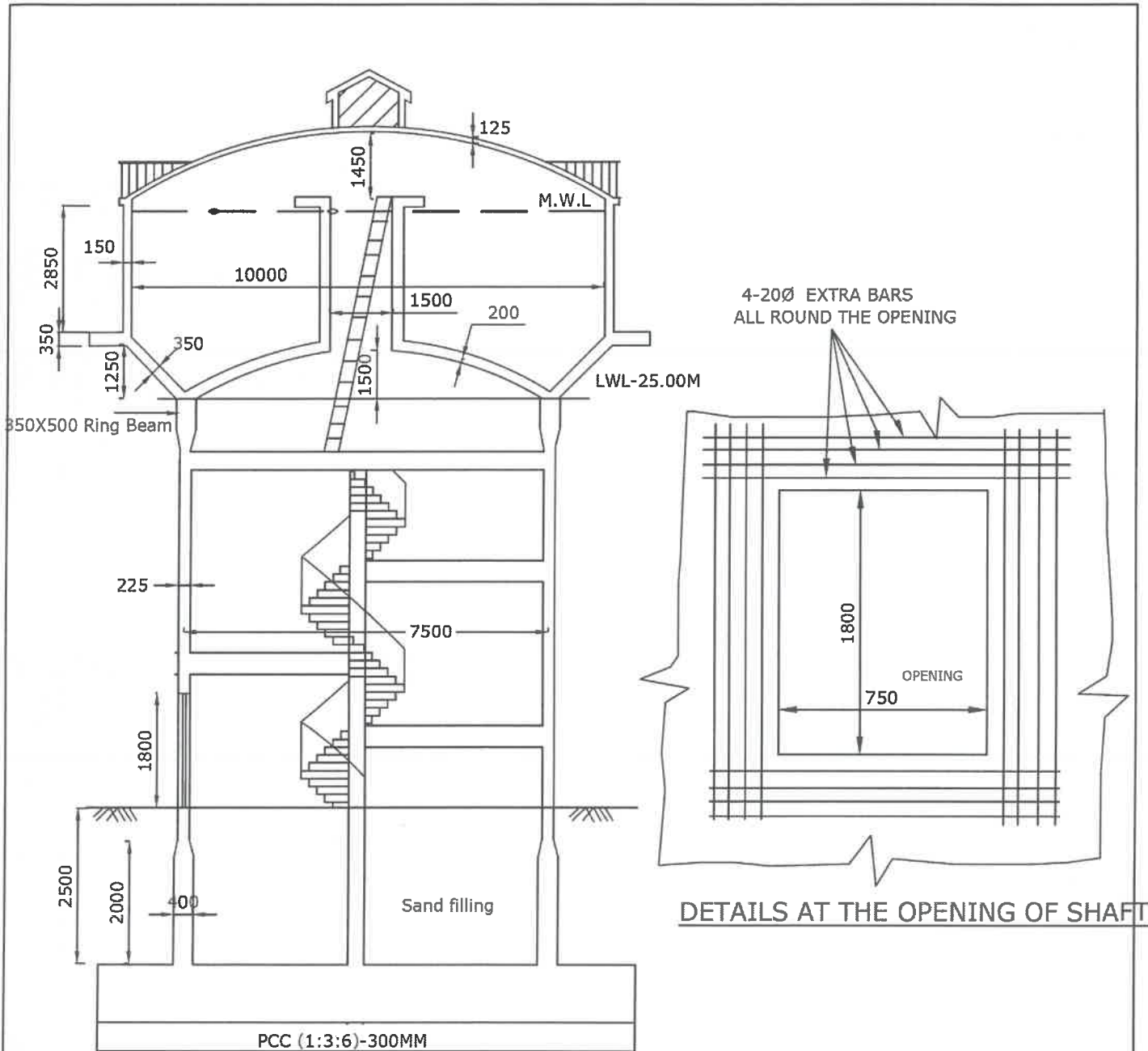
//Approved//

*Flash*  
Chief Engineer-II  
RWS&S, Gollapudi  
Vijayawada.

*AEE*  
AEE

*DEE*  
DEE

*EE*  
EE



Wind Speed:200KMPH

*[Signature]*  
AEE

*[Signature]*  
DEE

*[Signature]*  
EE

//Approved//

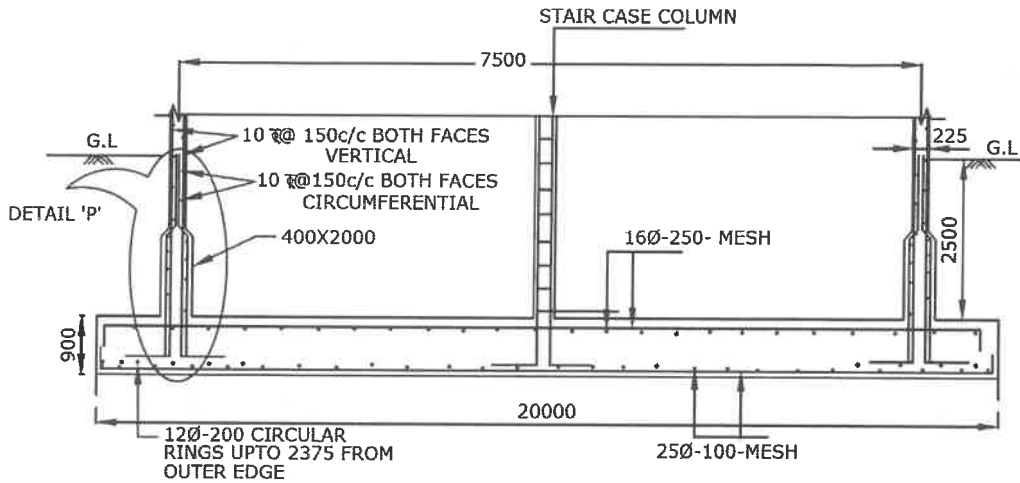
*[Signature]*  
Chief Engineer-II  
RW&S,Gollapudi  
Vijayawada.

**SCHEME:**

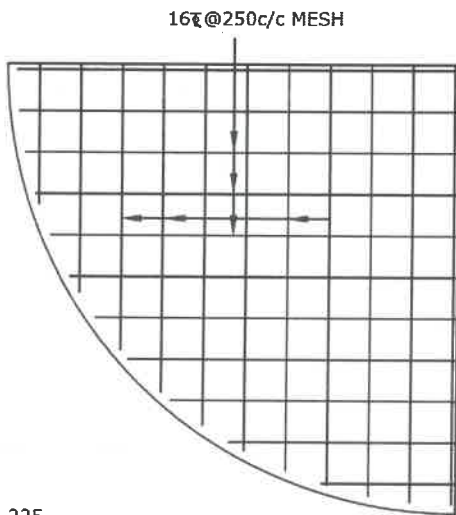
250 K.L OHBR

25M STAGING

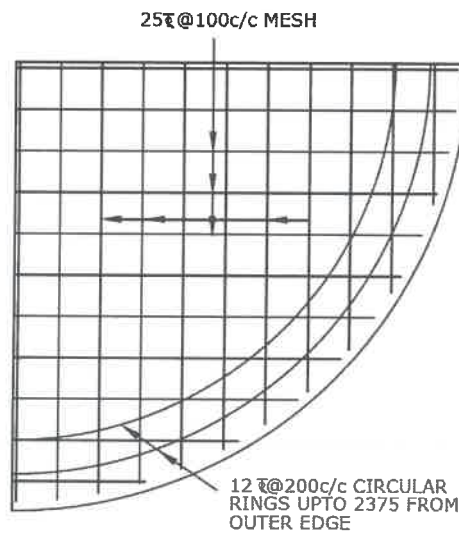
569



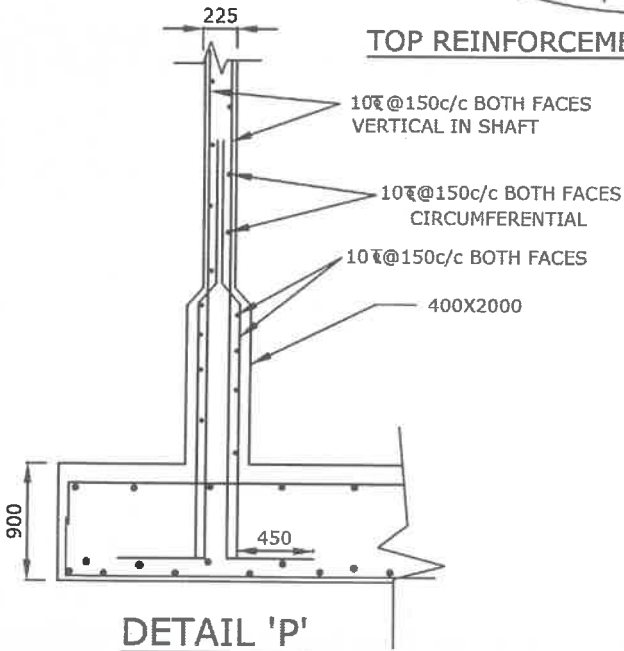
**SECTIONAL ELEVATION OF RAFT**



**TOP REINFORCEMENT**



**BOTTOM REINFORCEMENT**



**DETAIL 'P'**

**NOTE:**

1. GRADE OF CONCRETE : M30
2. GRADE OF STEEL : Fe415
3. BASIC WIND SPEED : 200 KMPH
4. S.B.C. OF SOIL : 5.0 t/m<sup>2</sup>
5. DEPTH OF FOUNDATION : 2.5m BELOW GROUND LEVEL UPTO TOP OF RAFT
6. FOR DETAILING OF REINFORCEMENT IS SP-34 SHALL BE FOLLOWED
7. PROVISIONS GIVEN IN IS 456-2000, IS 3370(PART-IV) SHALL BE FOLLOWED
8. PROVIDE SAND FILLING AS PER SITE CONDITION

**SCHEME:**

**250KL-OHBR-25.0M STG**

**SBC SOIL: 5.0T/M<sup>2</sup>**

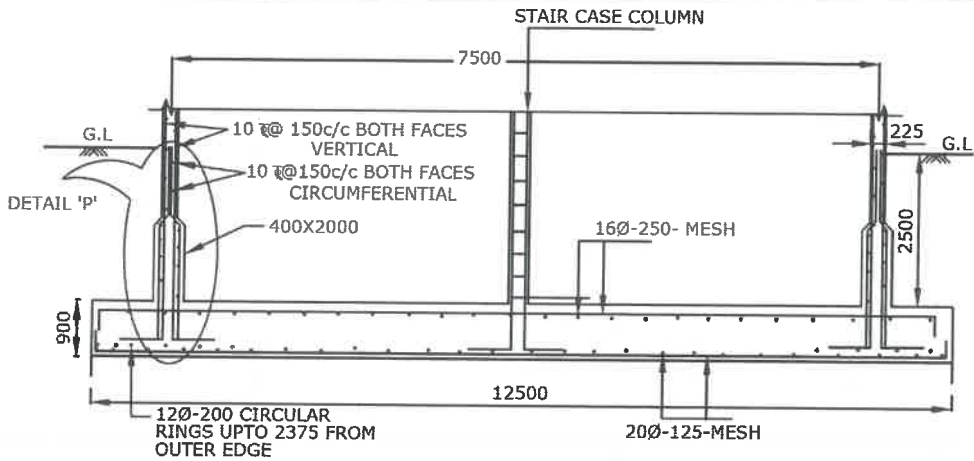
*AEE*

*DEE*

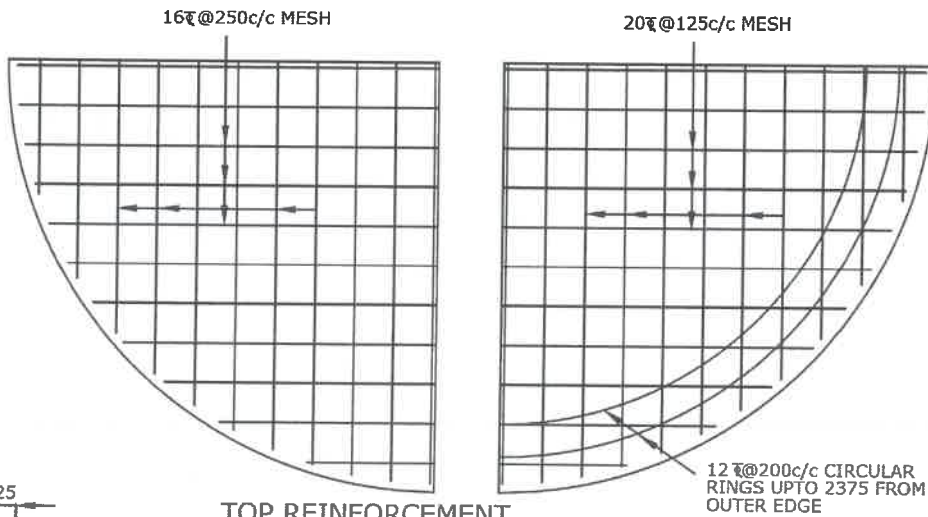
*EE*

//Approved//

Chief Engineer-II  
RWS&S, Gollapudi  
Vijayawada.

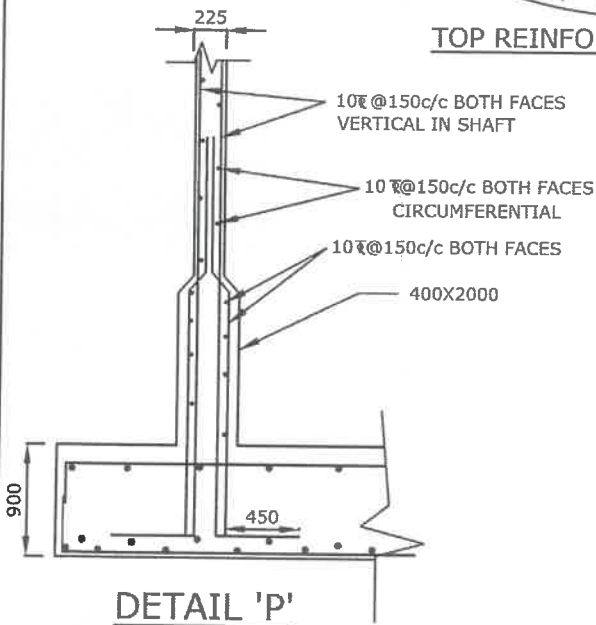


**SECTIONAL ELEVATION OF RAFT**



**TOP REINFORCEMENT**

**BOTTOM REINFORCEMENT**



**NOTE:**

1. GRADE OF CONCRETE : M30
2. GRADE OF STEEL : Fe415
3. BASIC WIND SPEED : 200 KMPH
4. S.B.C. OF SOIL : 10.0 t/m<sup>2</sup>
5. DEPTH OF FOUNDATION : 2.5m BELOW GROUND LEVEL UPTO TOP OF RAFT
6. FOR DETAILING OF REINFORCEMENT IS SP-34 SHALL BE FOLLOWED
7. PROVISIONS GIVEN IN IS 456-2000, IS 3370(PART-IV) SHALL BE FOLLOWED
8. PROVIDE SAND FILLING AS PER SITE CONDITION

*AEE*

*DEE*

*EE*

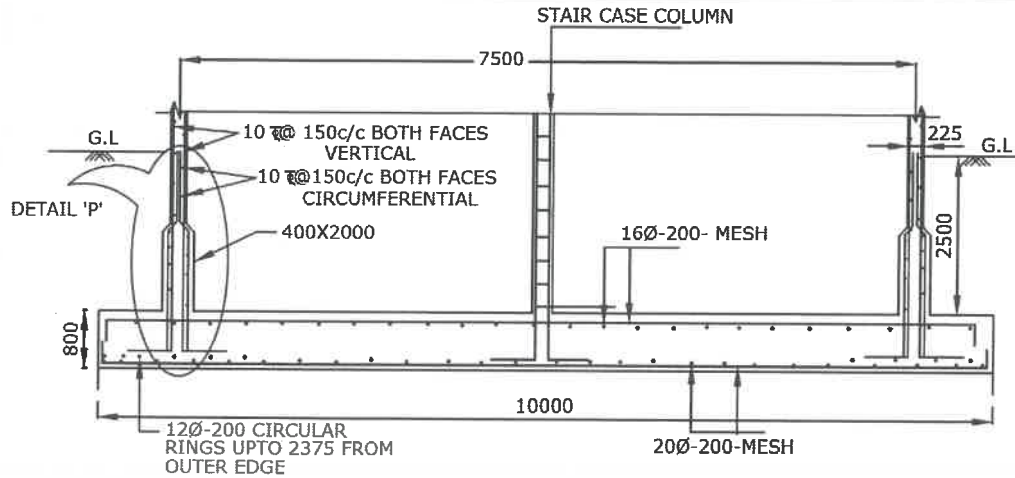
//Approved//

Chief Engineer-II  
RWS&S, Gollapudi  
Vijayawada.

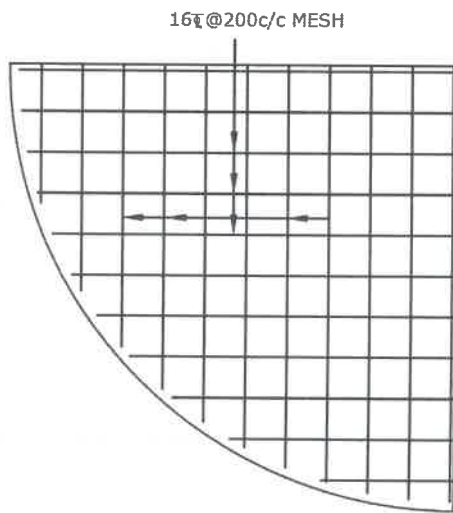
**SCHEME:**

**250KL-OHBR-25.0M STG**

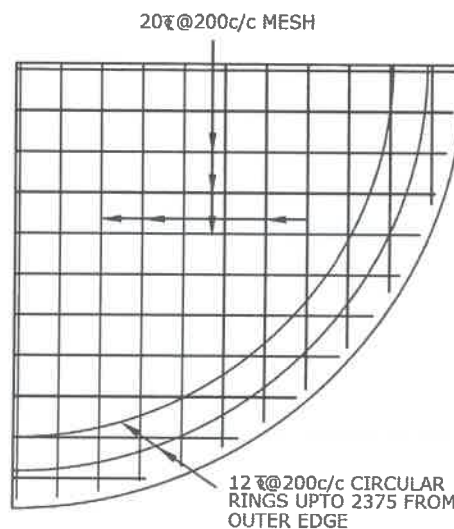
**SBC SOIL: 10.0T/M<sup>2</sup>**



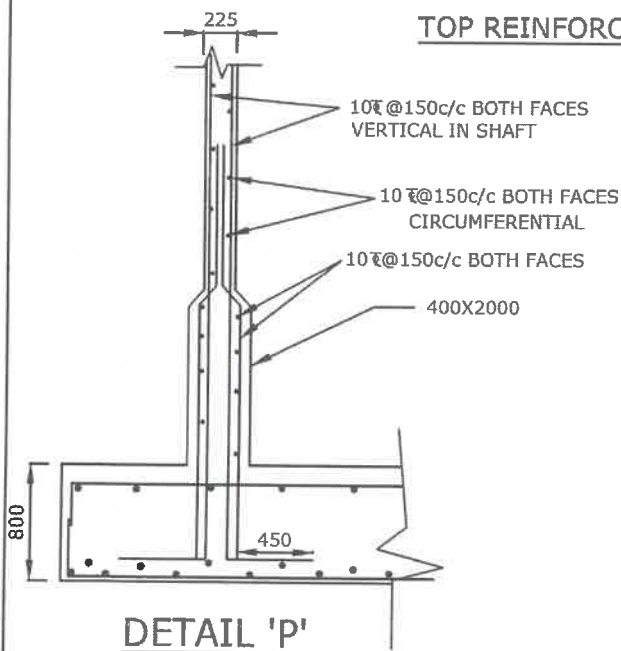
**SECTIONAL ELEVATION OF RAFT**



**TOP REINFORCEMENT**



**BOTTOM REINFORCEMENT**



**DETAIL 'P'**

**NOTE:**

1. GRADE OF CONCRETE : M30
2. GRADE OF STEEL : Fe415
3. BASIC WIND SPEED : 200 KMPH
4. S.B.C. OF SOIL : 15.0 t/m<sup>2</sup>
5. DEPTH OF FOUNDATION : 2.5m BELOW GROUND LEVEL UPTO TOP OF RAFT
6. FOR DETAILING OF REINFORCEMENT IS SP-34 SHALL BE FOLLOWED
7. PROVISIONS GIVEN IN IS 456-2000, IS 3370(PART-IV) SHALL BE FOLLOWED
8. PROVIDE SAND FILLING AS PER SITE CONDITION

*AEE*  
AEE

*DEE*  
DEE

*EE*  
EE

//Approved//

*RJC*  
Chief Engineer-II  
RWS&S, Gollapudi  
Vijayawada.

**SCHEME:**

**250KL-OHBR-25.0M STG**

**SBC SOIL: 15.0T/M<sup>2</sup>**