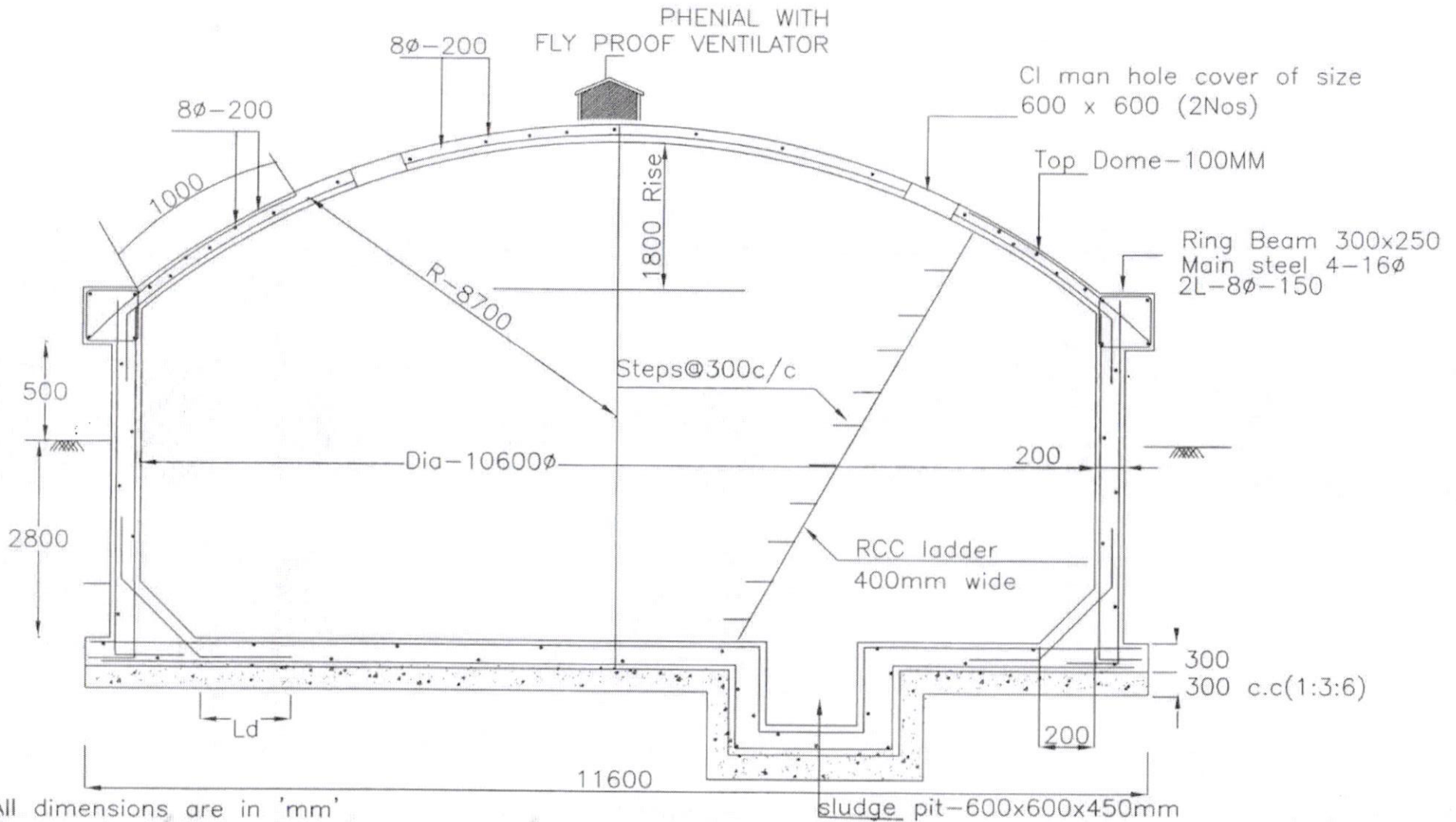


250 KL SUMP

175



All dimensions are in 'mm'
Concrete mix V.R.C.C M30
Steel Fe-415
Reinforcement Details shall be as per IS - SP34

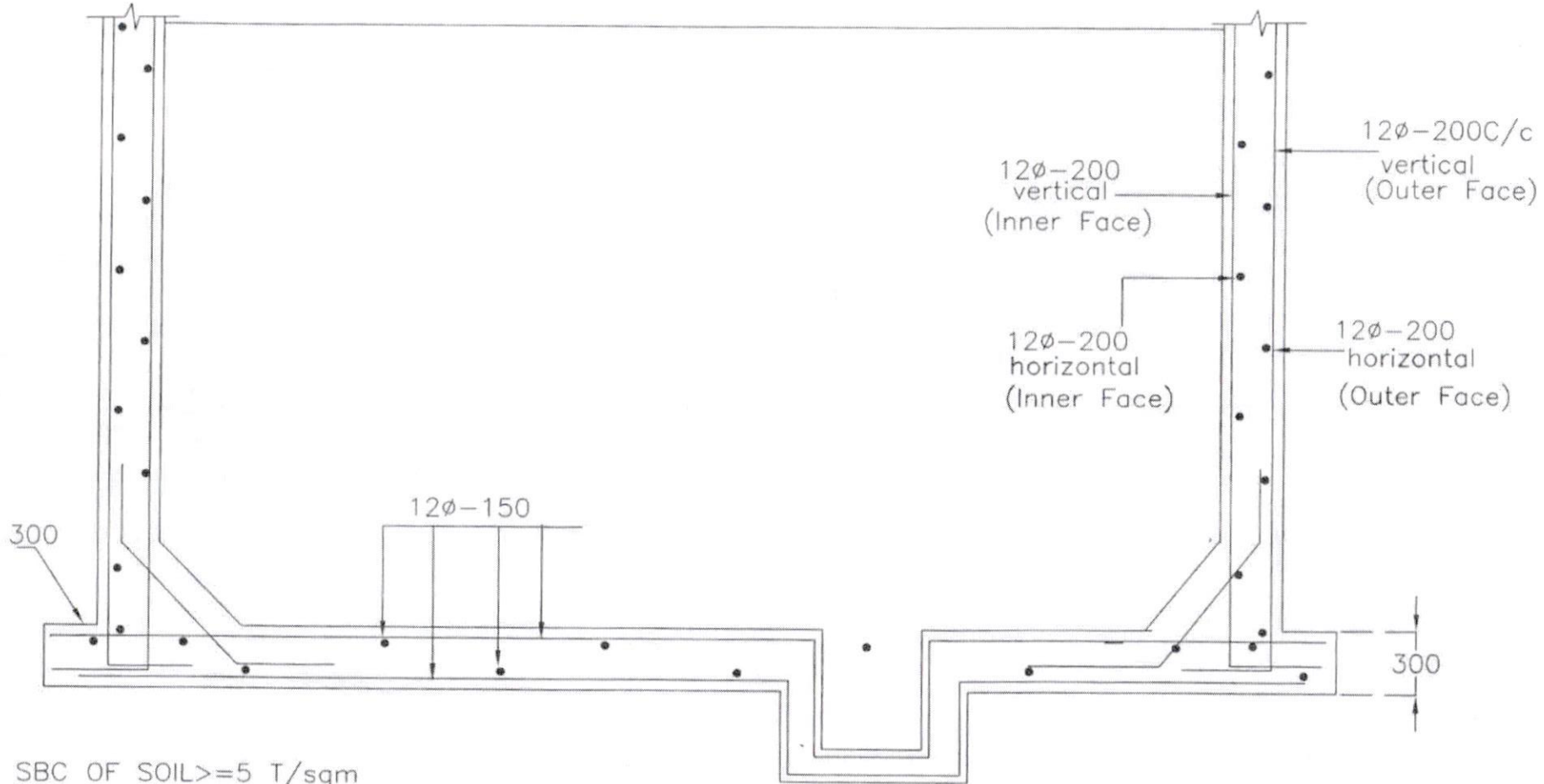
POR
Asst Executive Engineer

RSM
28.01.19
Dy.Executive Engineer

//Approved//
[Signature]
Chief Engineer-II
RWS&S, Gollapudi
Vijayawada.

SCHEME:
DWG.NO.1

250 KL SUMP



SBC OF SOIL ≥ 5 T/sqm

Note: provide sand bed as per site conditions and verify the uplift condition before grounding the work, if depth of water table < 1.75 m below GL

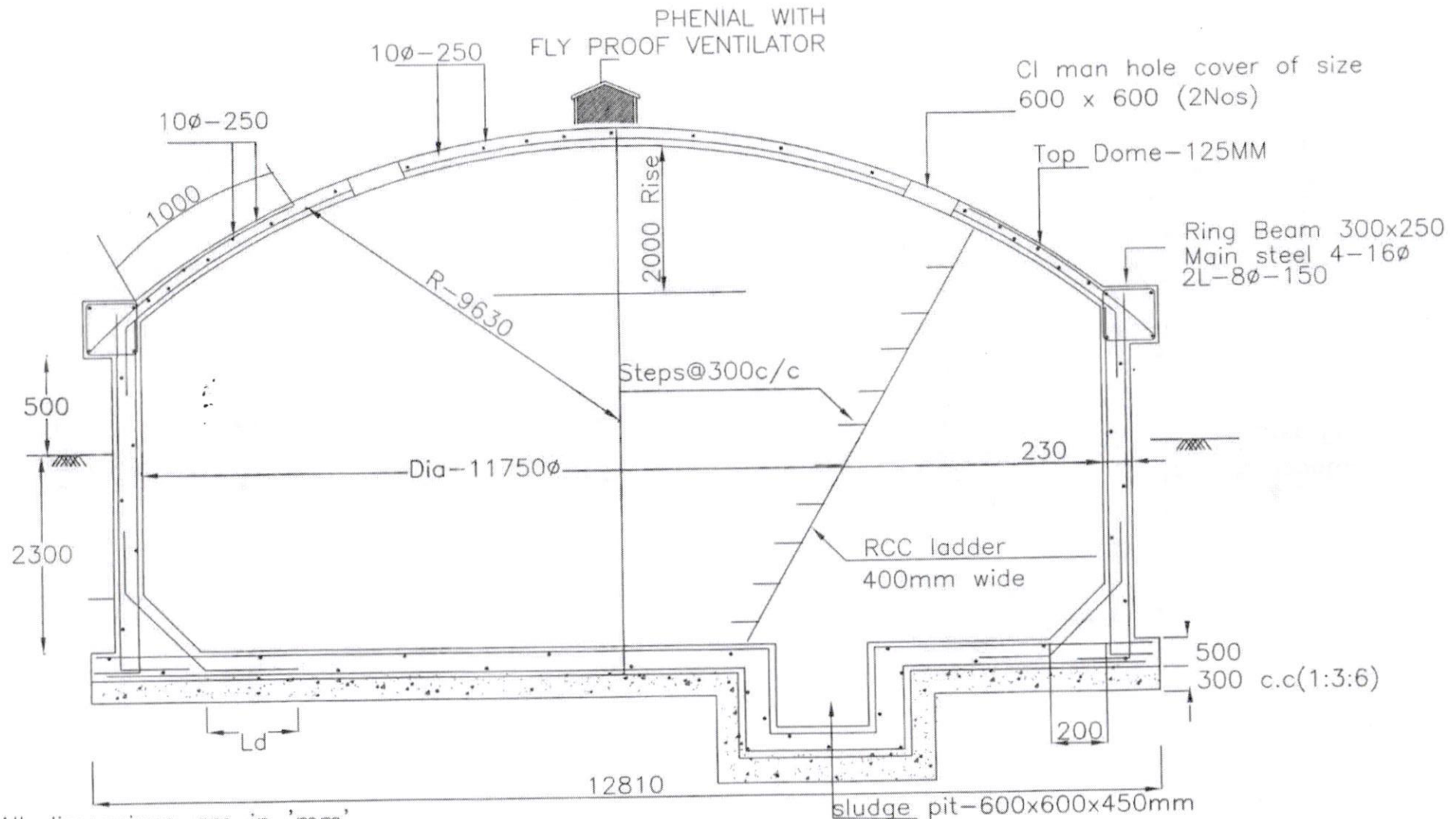
Poa
Asst Executive Engineer

937
25.01.19
Dy. Executive Engineer

Approved
[Signature]
Chief Engineer-II
RWS&S, Gollapudi
Vijayawada.

SCHEME:
DWG.NO.2

250 KL SUMP



All dimensions are in 'mm'
Concrete mix V.R.C.C M30
Steel Fe-415
Reinforcement Details shall be as per IS - SP34

POA
Asst Executive Engineer

RSM
25-01-19
Dy. Executive Engineer

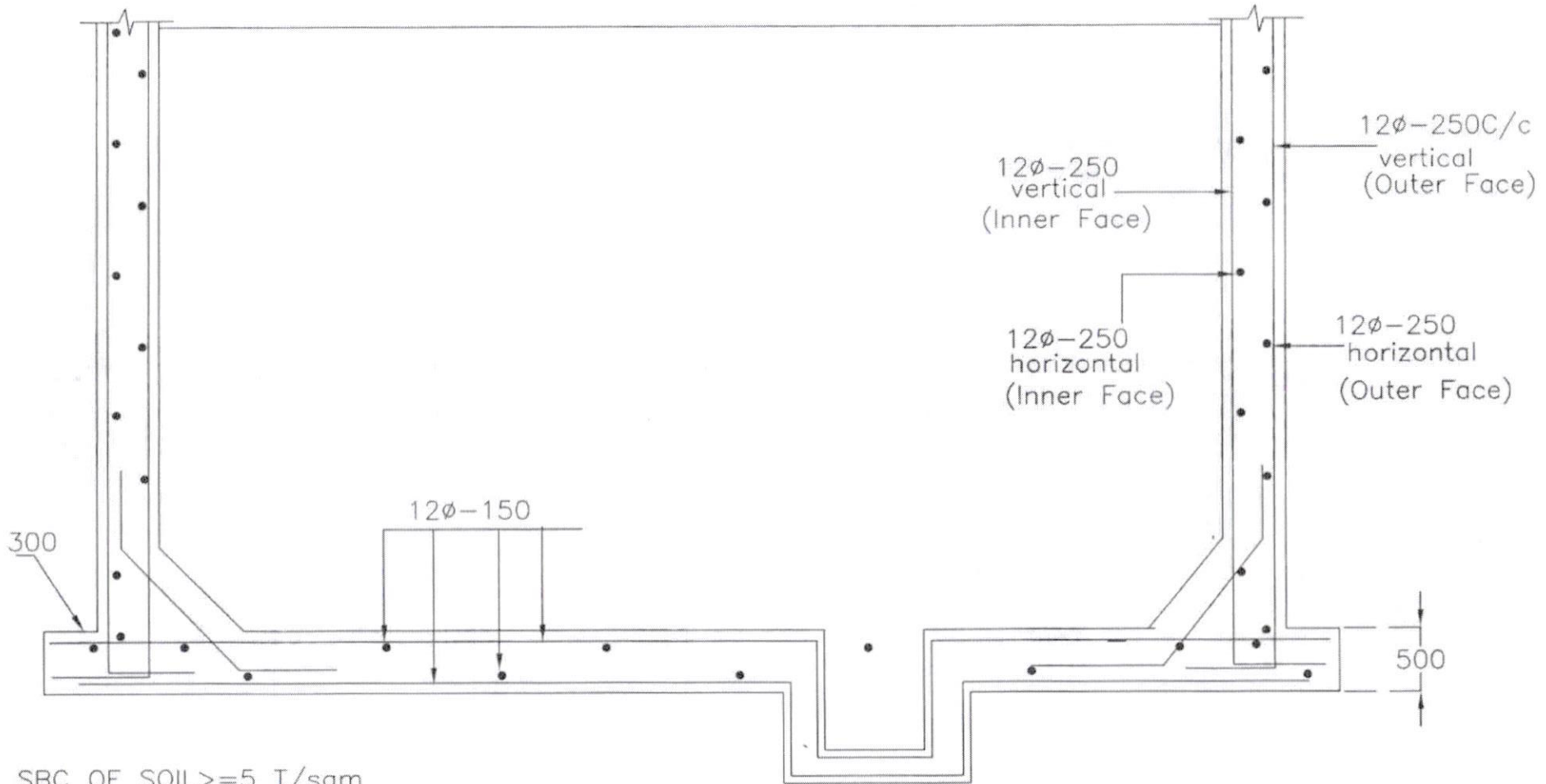
// Approved //
Chief Engineer-II
RWS&S, Gollapudi
Vijayawada.

Sump is designed for uplift

SCHEME:

DWG.NO.1

250 KL SUMP



SBC OF SOIL ≥ 5 T/sqm

Note: provide sand bed as per site conditions and verify the uplift condition before grounding the work, if depth of water table < 1.0 m below GL

178

P.K.
Asst Executive Engineer

SJM
25.01.19
Dy.Executive Engineer

[Signature]
Approved //
Chief Engineer-II
RWS&S, Gollapudi
Vijayawada.

SCHEME:

DWG.NO.2