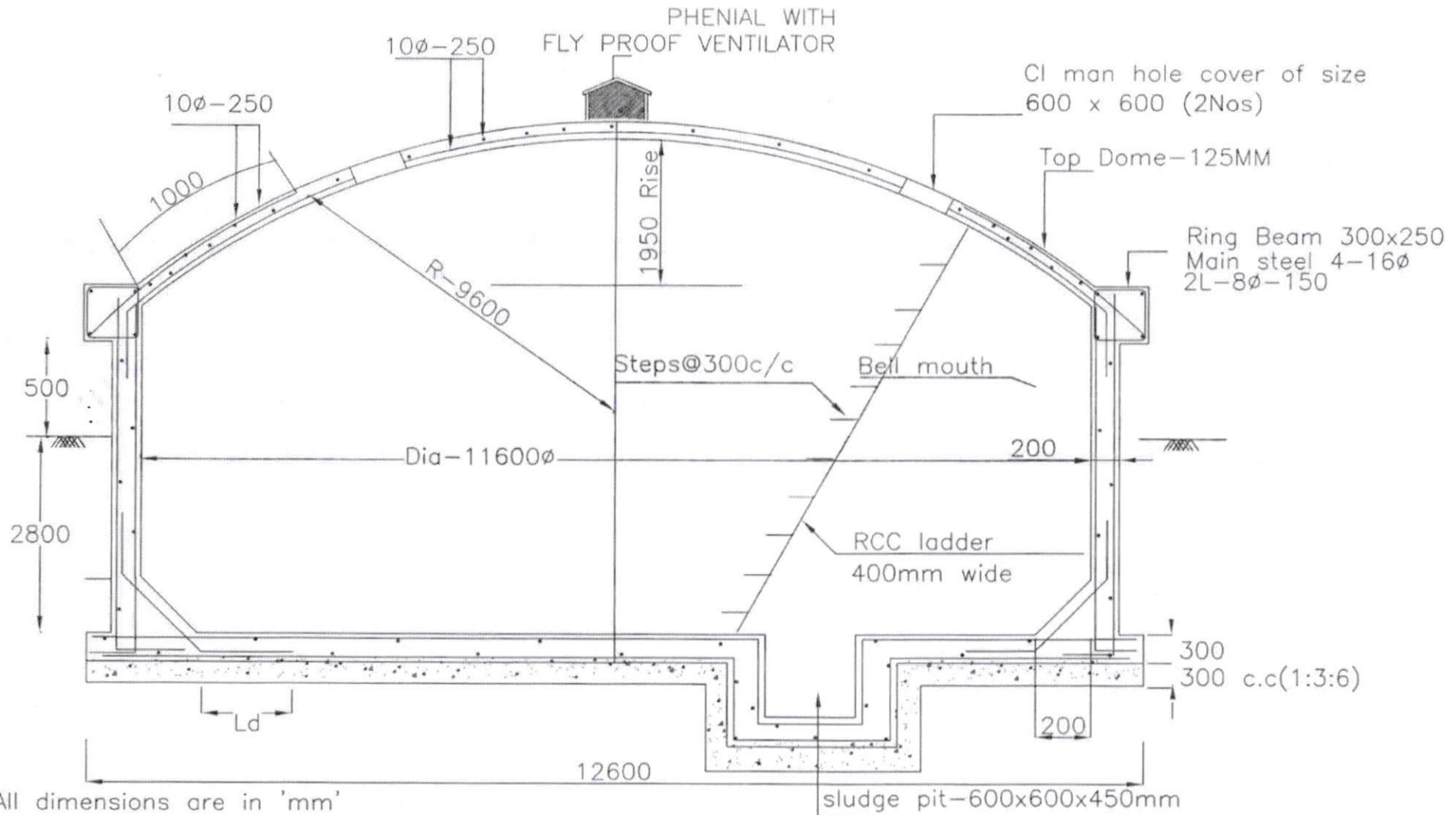


300 KL SUMP



All dimensions are in 'mm'
Concrete mix V.R.C.C M30
Steel Fe-415
Reinforcement Details shall be as per IS - SP34

PR
Asst Executive Engineer

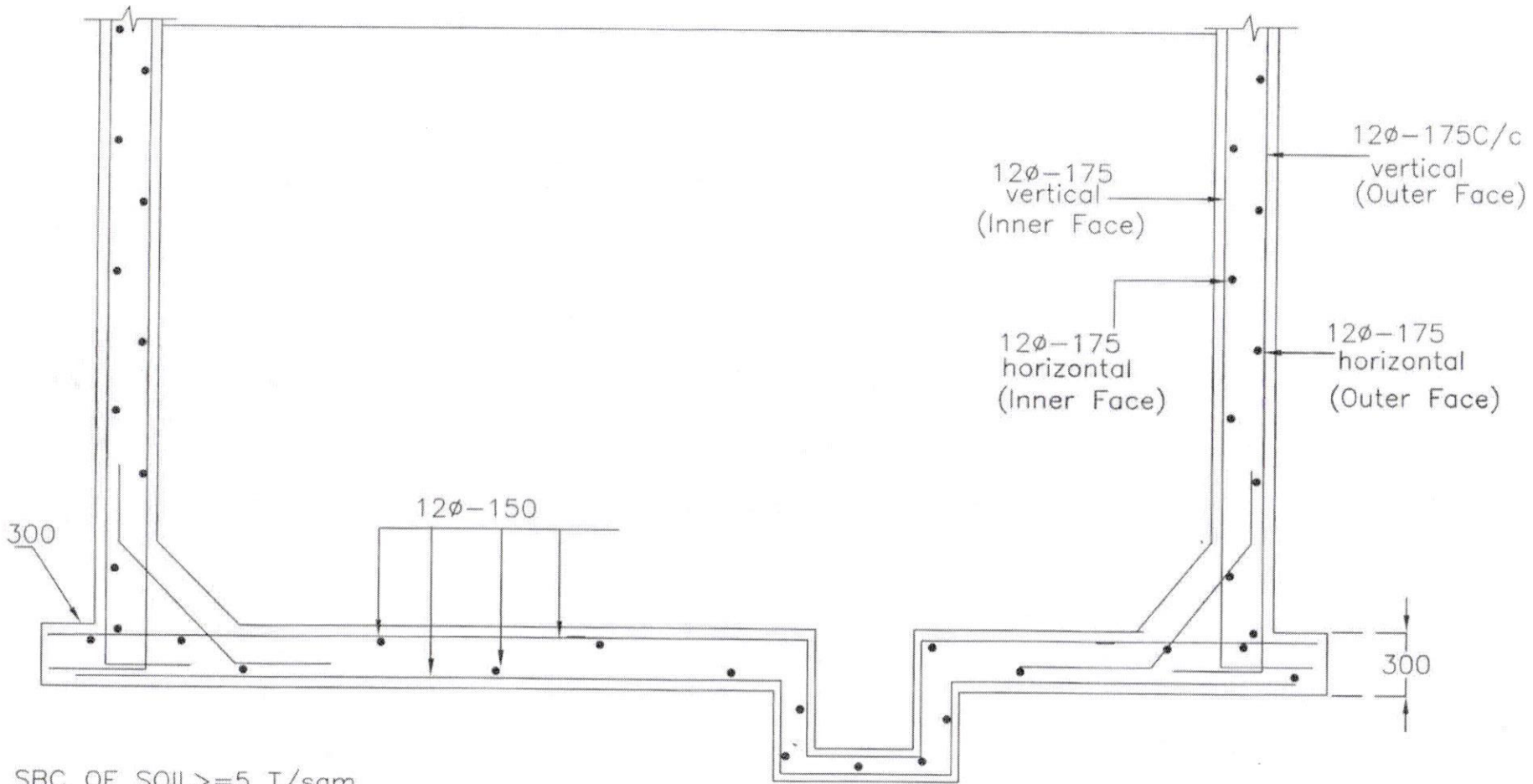
933
Dy. Executive Engineer

//Approved//
[Signature]
Chief Engineer-II
RWS&S, Gollapudi
Vijayawada.

SCHEME:

DWG.NO.1

300 KL SUMP



SBC OF SOIL ≥ 5 T/sqm
Note: provide sand bed as per site conditions and verify the uplift condition before grounding the work, if depth of water table < 1.75 m below GL

PR
Asst Executive Engineer

RJB
25.01.19
Dy.Executive Engineer

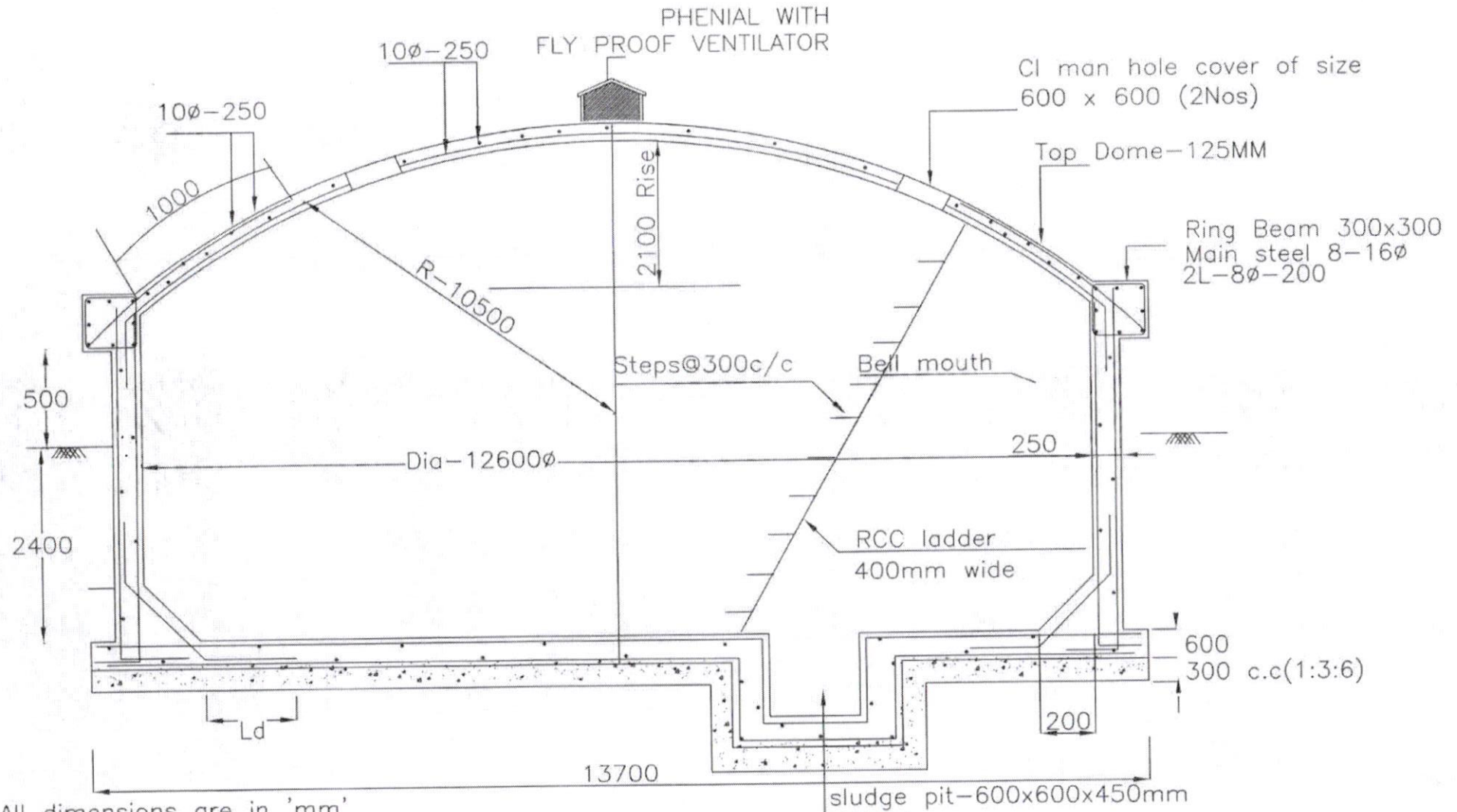
// Approved //
[Signature]
Chief Engineer-II
RWS&S Gollapudi
Vijayawada.

SCHEME:
DWG.NO.2

134 081

300 KL SUMP

181



All dimensions are in 'mm'
Concrete mix V.R.C.C M30
Steel Fe-415
Reinforcement Details shall be as per IS - SP34

Roe
Asst Executive Engineer

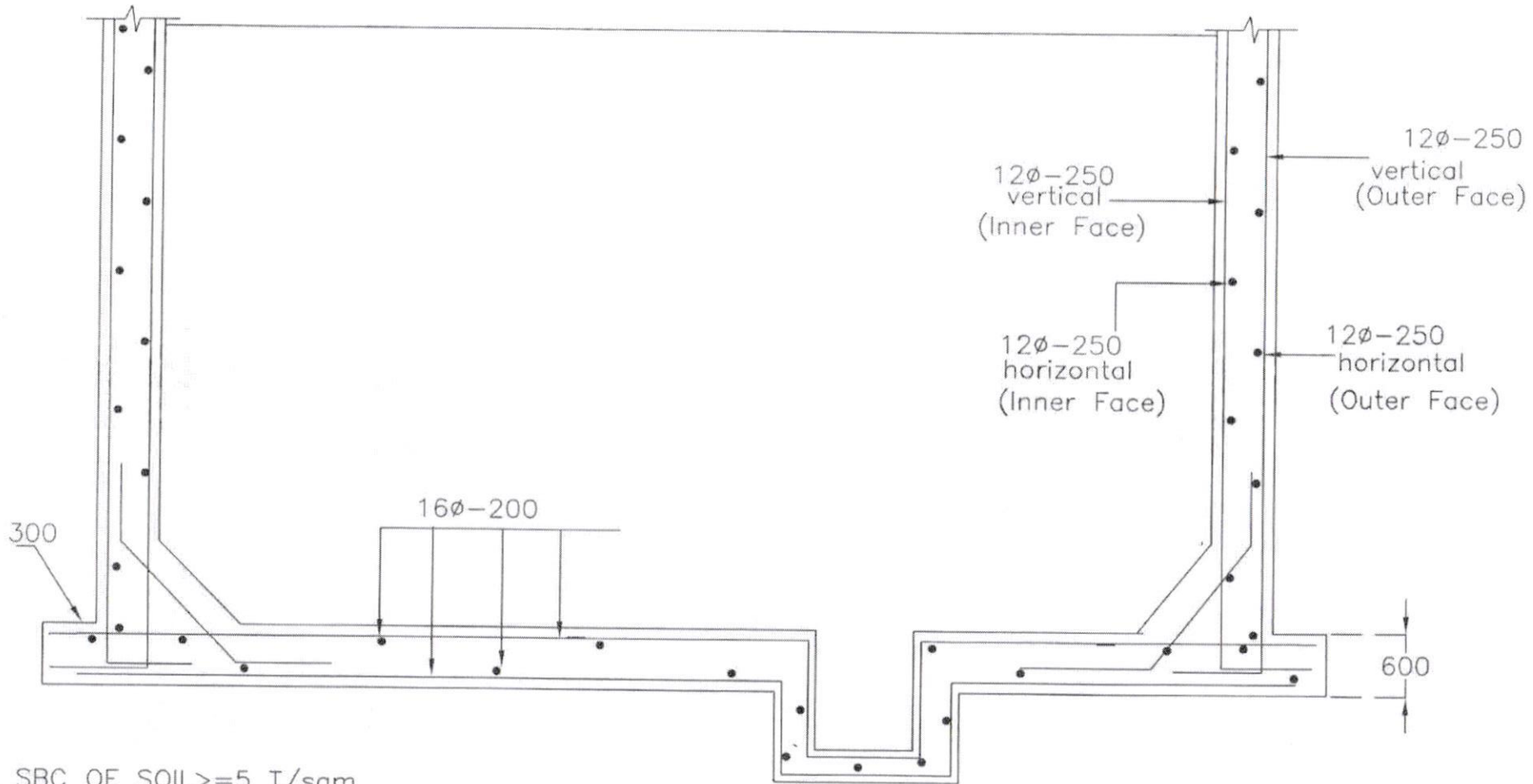
P.M.
Dy. Executive Engineer

//Approved//
Chief Engineer-II
RWS&S, Collapudi
Vijayawada.

Sump is designed for uplift

SCHEME:
DWG.NO.1

300 KL SUMP



182

SBC OF SOIL ≥ 5 T/sqm

Note: provide sand bed as per site conditions and verify the uplift condition before grounding the work, if depth of water table < 1.0 m below GL

Por

Asst Executive Engineer

PJM
25.01.19

Dy.Executive Engineer

Approved/
[Signature]

Engineer-II
RWS&S, Gollapudi
Vijayawada.

SCHEME:
DWG.NO.2