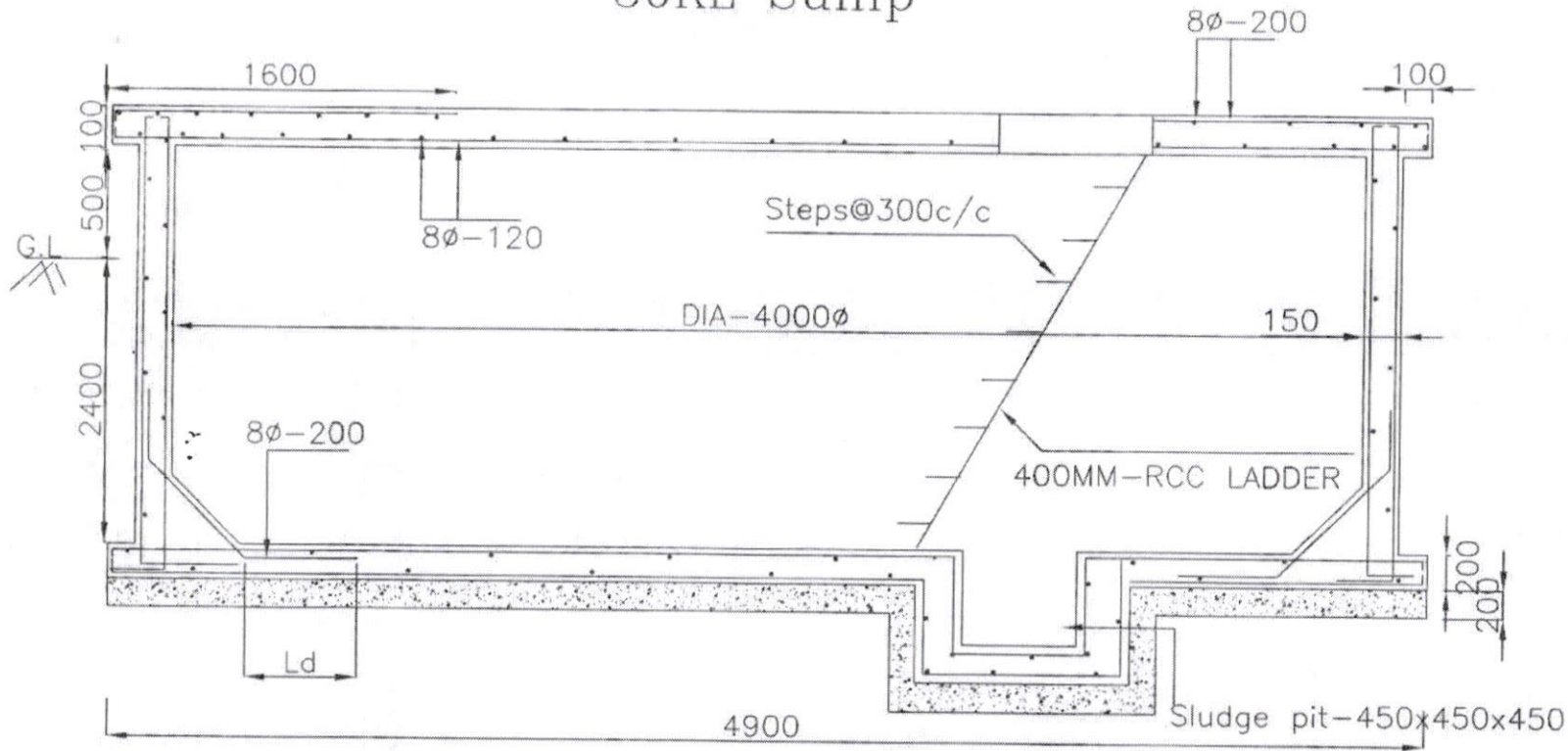


# 30KL Sump



S 41

All dimensions are in 'mm'

Concrete mix V.R.C.C M30

Steel Fe-415

Reinforcement Details shall be as per IS - SP34

SBC OF SOIL  $\geq 5.0T/sqm$

Depth of water table is -1.0m below GL

Note: provide sand bed as per site conditions and verify the uplift condition before grounding the work, if depth of water table  $< 1.00m$  below GL

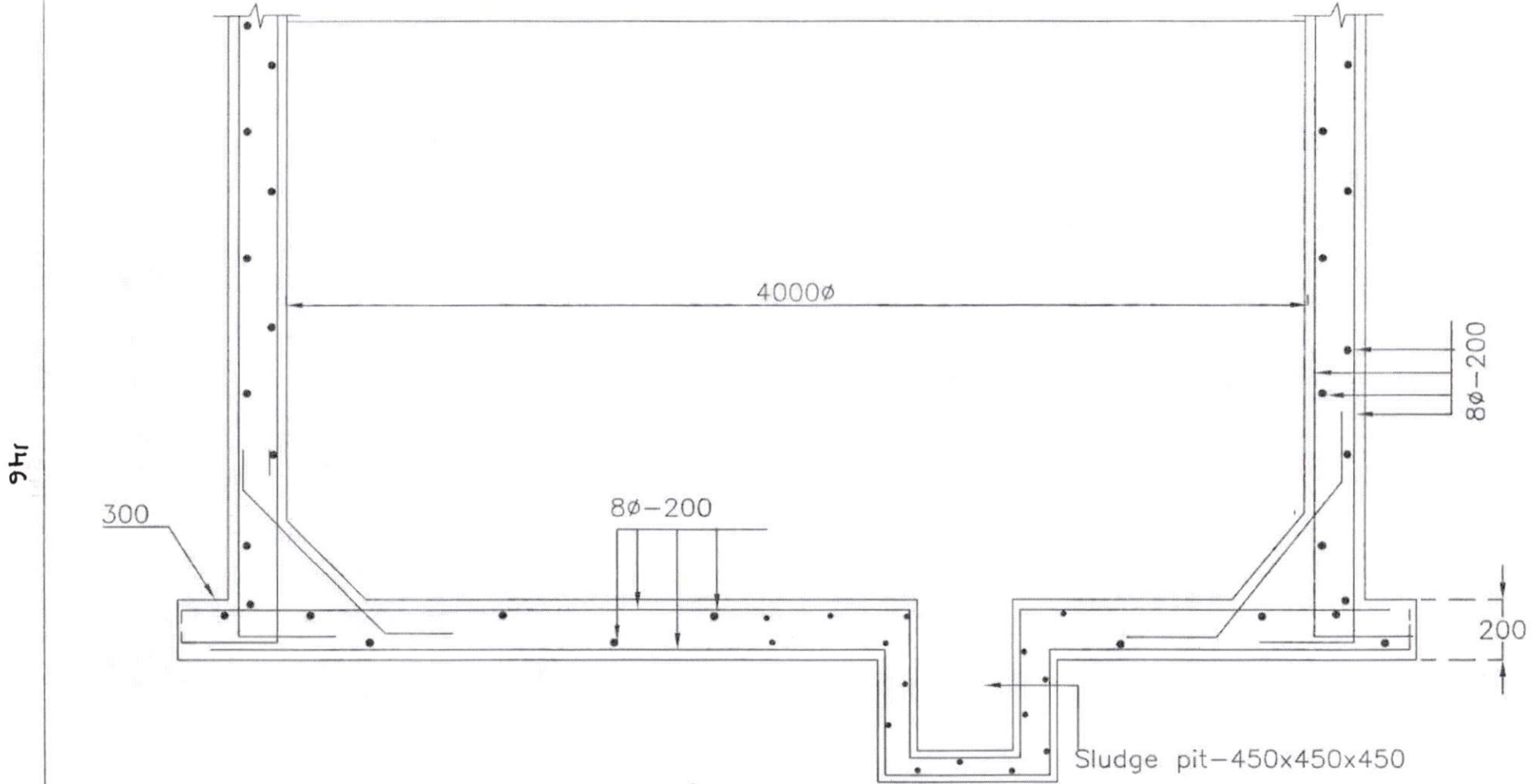
Asst Executive Engineer Dy.Executive Engineer  
25.1.19

//Approved//  
Chief Engineer-II  
RWS&S,Gollapudi  
Vijayawada.

SCHEME:

DWG.NO.1

# 30KL Sump



*POK*  
Asst Executive Engineer

*90M*  
25.1.19  
Dy.Executive Engineer

//Approved//  
*[Signature]*  
Chief Engineer-II  
RWS&S, Gollapudi  
Vijayawada.

SCHEME:  
DWG.NO.2