

*AEE*  
AEE

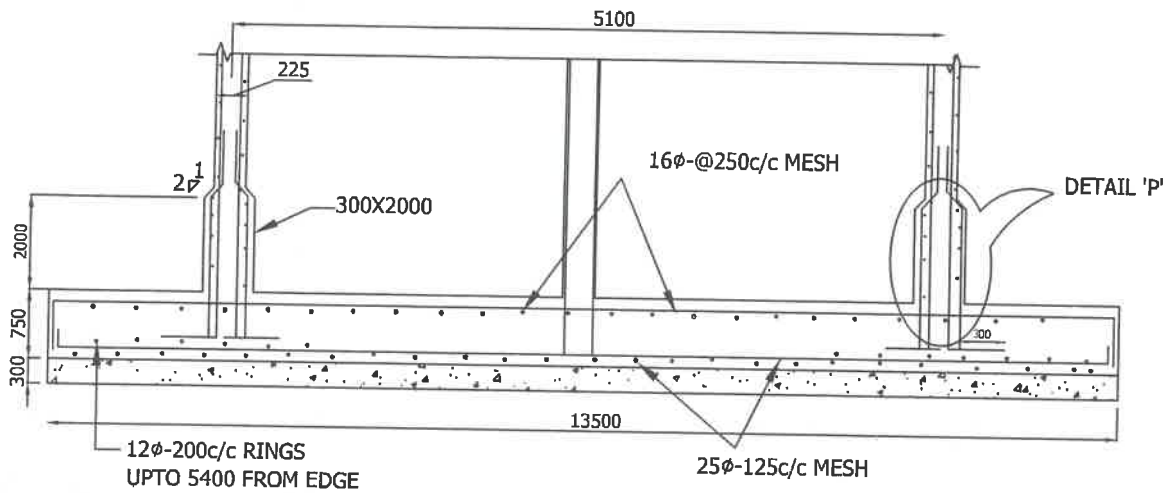
*DEE*  
DEE

*Y.S*  
EE

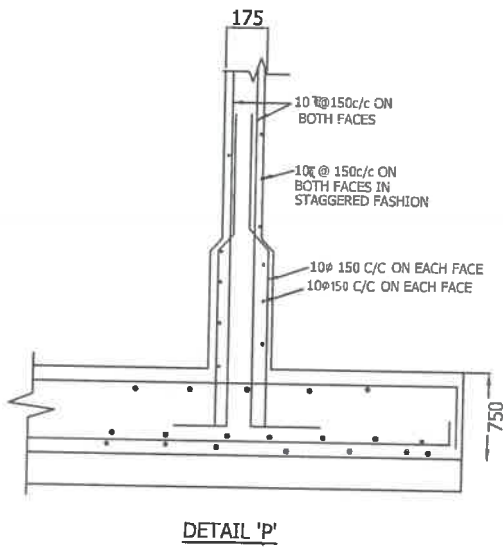
//Approved//  
*PK*  
Chief Engineer-II  
RWS&S, Gollapudi  
Vijayawada.

WIND SPEED: 200 KMPH

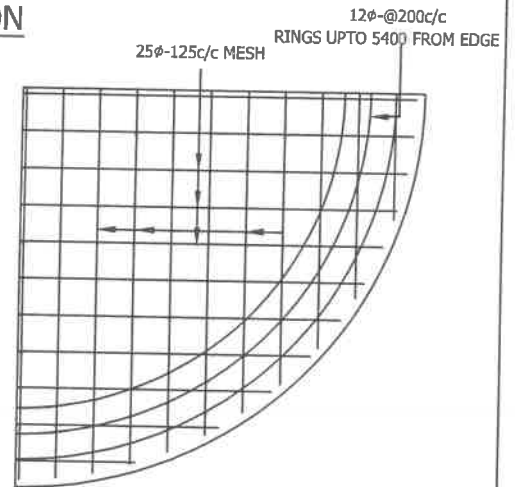
SCHEME:
40KL-OHBR
22.65M STAGING



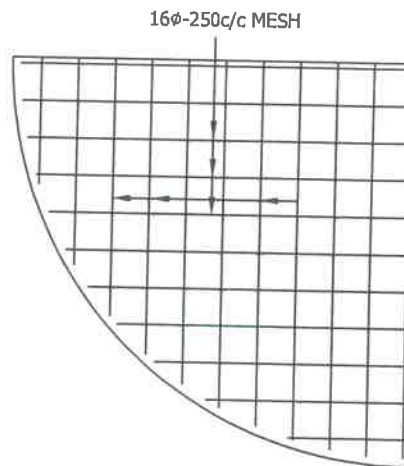
**SECTIONAL ELEVATION**



**DETAIL 'P'**



**BOTTOM REINFORCEMENT**



**TOP REINFORCEMENT**

**NOTE:**

1. S.B.C. - 5-t/m<sup>2</sup>
2. WIND SPEED IS 200KMPH
3. GRADE OF CONCRETE M30  
GRADE OF STEEL Fe415
4. DETAILING OF REINFORCEMENT SHALL BE AS PER IS SP-34
5. PROVISIONS OF IS456, IS3370 SHALL BE FOLLOWED

*[Signature]*  
AEE

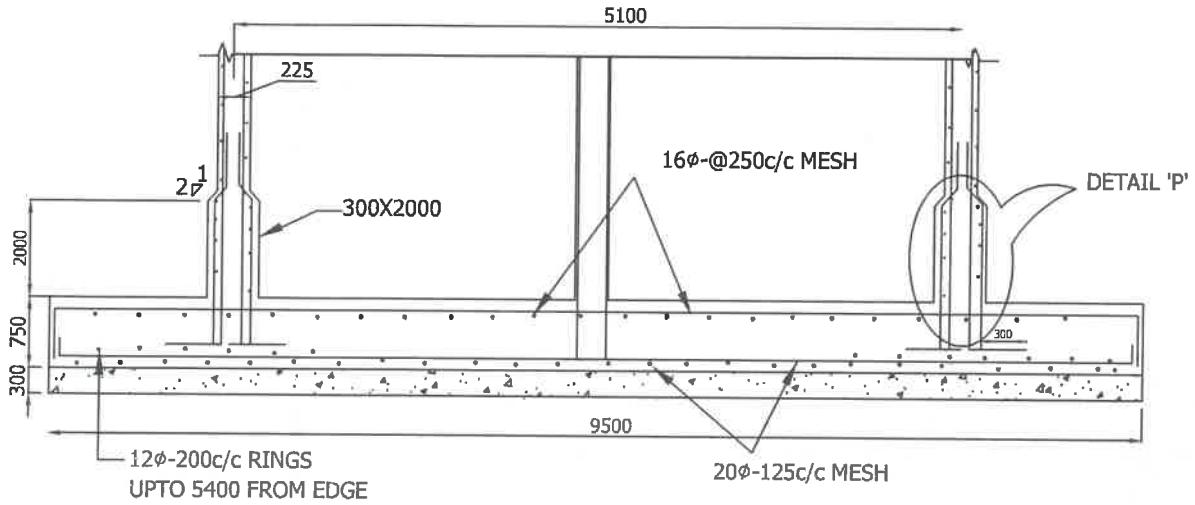
*[Signature]*  
DEE

*[Signature]*  
EE

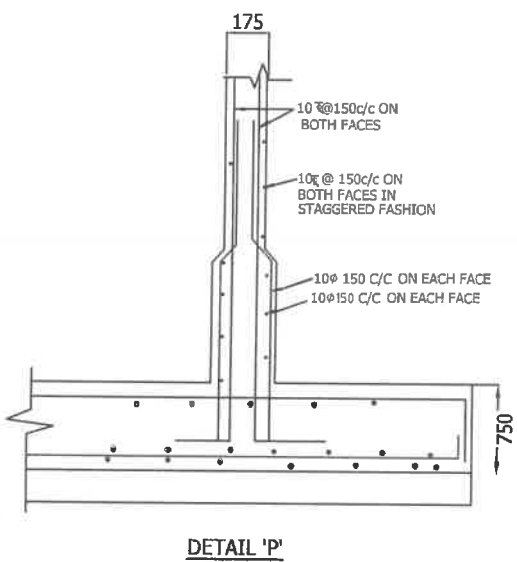
//Approved//

*[Signature]*  
Chief Engineer-II  
RWS&S, Gollapudi  
Vijayawada.

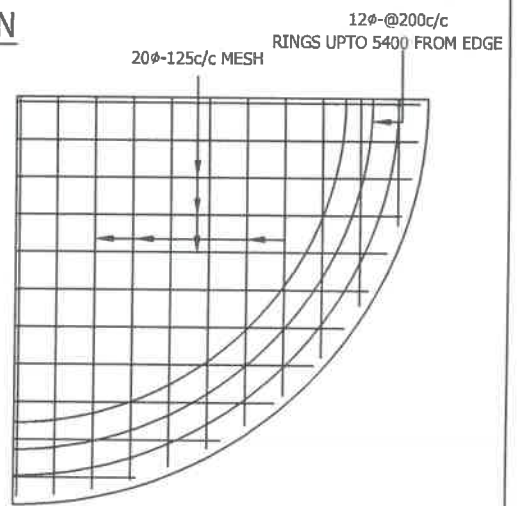
SCHEME:
40KL O.H.B.R
22.65M STAGING
SBC: 5T/M <sup>2</sup>



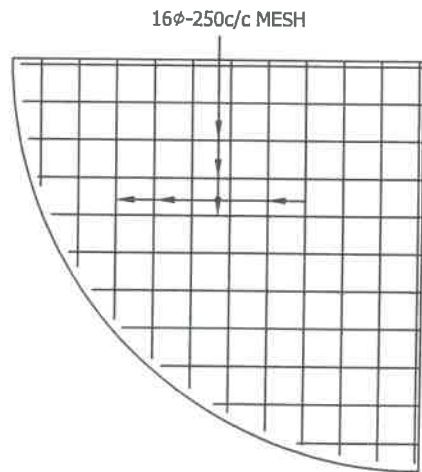
**SECTIONAL ELEVATION**



**DETAIL 'P'**



**BOTTOM REINFORCEMENT**



**TOP REINFORCEMENT**

**NOTE:**

1. S.B.C. - 10-t/m<sup>2</sup>
2. WIND SPEED IS 200KMPH
3. GRADE OF CONCRETE M30  
GRADE OF STEEL Fe415
4. DETAILING OF REINFORCEMENT SHALL BE AS PER IS SP-34
5. PROVISIONS OF IS456, IS3370 SHALL BE FOLLOWED

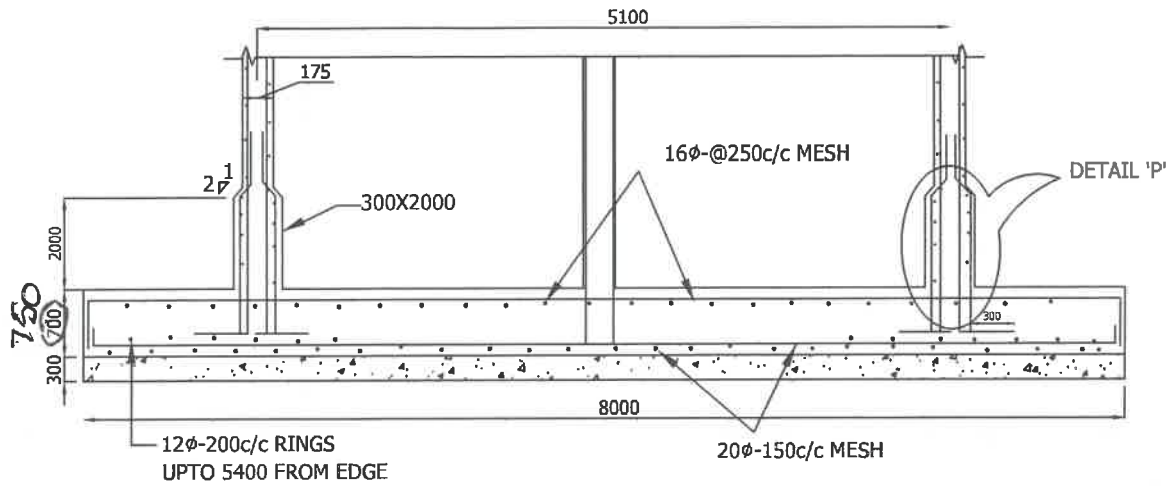
*AEE*  
AEE

*DEE*  
DEE

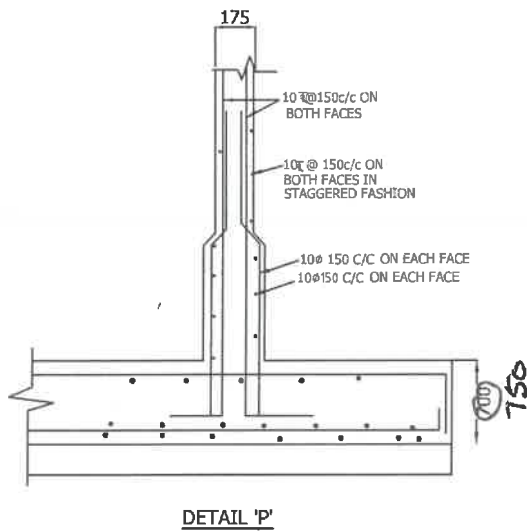
*EE*  
EE

//Approved//  
*[Signature]*  
Chief Engineer-II  
RWS&S, Gollapudi  
Vijayawada.

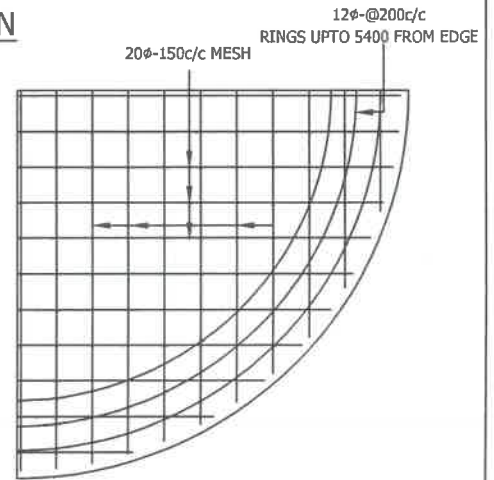
<b>SCHEME:</b>
40KL O.H.B.R
22.65M STAGING
SBC:10T/M <sup>2</sup>



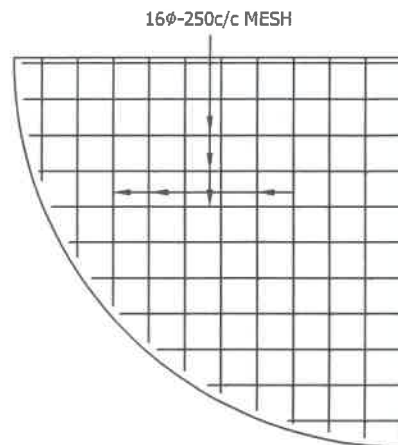
**SECTIONAL ELEVATION**



**DETAIL 'P'**



**BOTTOM REINFORCEMENT**



**TOP REINFORCEMENT**

**NOTE:**

1. S.B.C. -15-t/m<sup>2</sup>
2. WIND SPEED IS 150KMPH
3. GRADE OF CONCRETE M30  
GRADE OF STEEL Fe415
4. DETAILING OF REINFORCEMENT SHALL BE AS PER IS SP-34
5. PROVISIONS OF IS456, IS3370 SHALL BE FOLLOWED

*AEE*  
AEE

*DEE*  
DEE

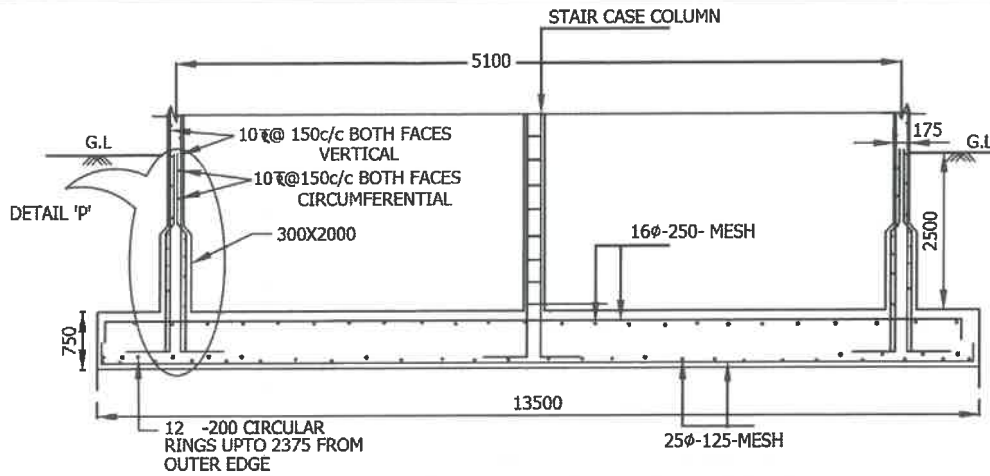
*EE*  
EE

//Approved//

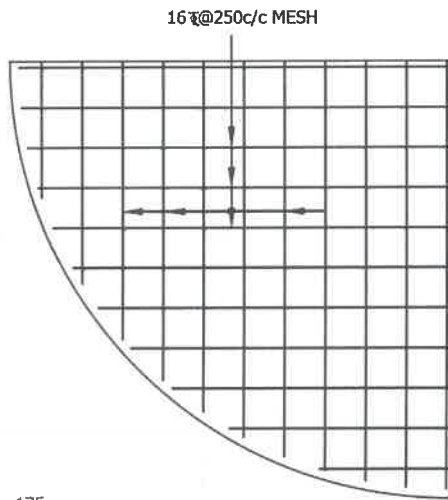
*[Signature]*  
Chief Engineer-II  
RWS&S, Gollapudi  
Vijayawada.

SCHEME:
40KL O.H.B.R
25M STAGING
SBC:15T/M <sup>2</sup>

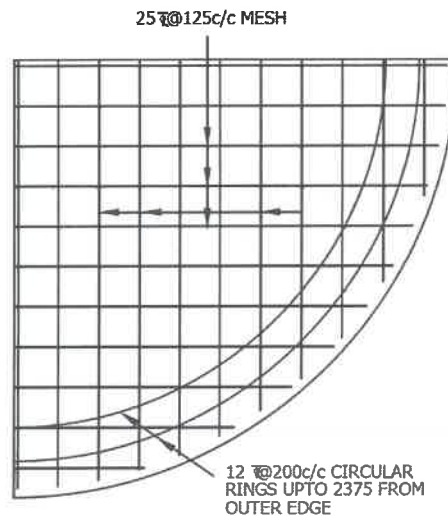




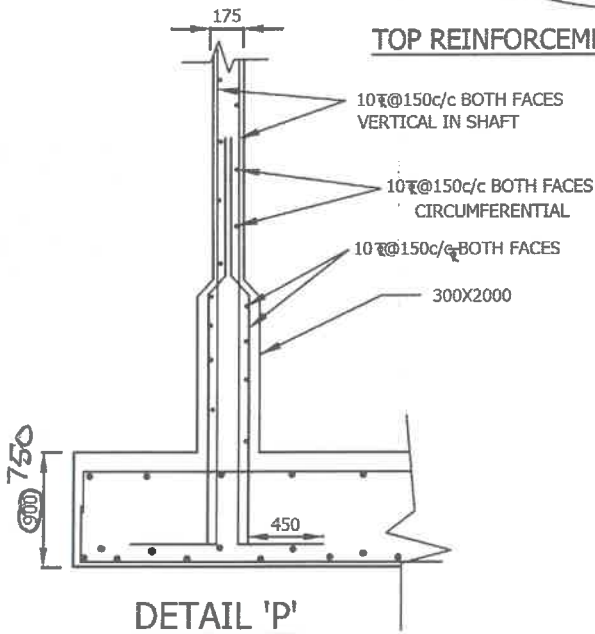
**SECTIONAL ELEVATION OF RAFT**



**TOP REINFORCEMENT**



**BOTTOM REINFORCEMENT**



**DETAIL 'P'**

**NOTE:**

1. GRADE OF CONCRETE : M30
2. GRADE OF STEEL : Fe415
3. BASIC WIND SPEED : 200 KMPH
4. S.B.C. OF SOIL : 5.0 t/m<sup>2</sup>
5. DEPTH OF FOUNDATION : 2.5m BELOW GROUND LEVEL UPTO TOP OF RAFT
6. FOR DETAILING OF REINFORCEMENT IS SP-34 SHALL BE FOLLOWED
7. PROVISIONS GIVEN IN IS 456-2000, IS 3370(PART-IV) SHALL BE FOLLOWED
8. PROVIDE SAND FILLING AS PER SITE CONDITION

*AEE*

*DEE*

*EE*

//Approved//

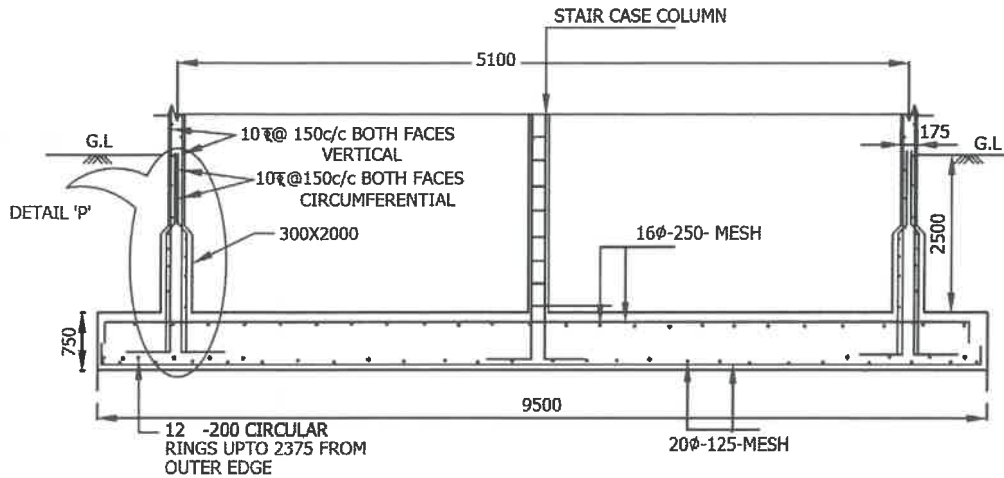
Chief Engineer-II  
RWS&S, Gollapudi  
Vijayawada.

**SCHEME:**

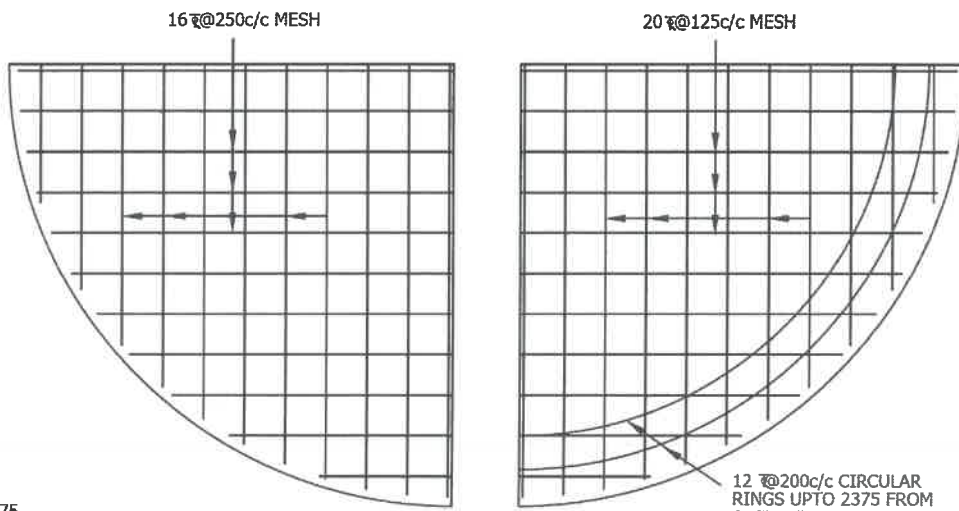
**40KL- OHBR-22.65M STG**

**SBC SOIL: 5.0T/M<sup>2</sup>**



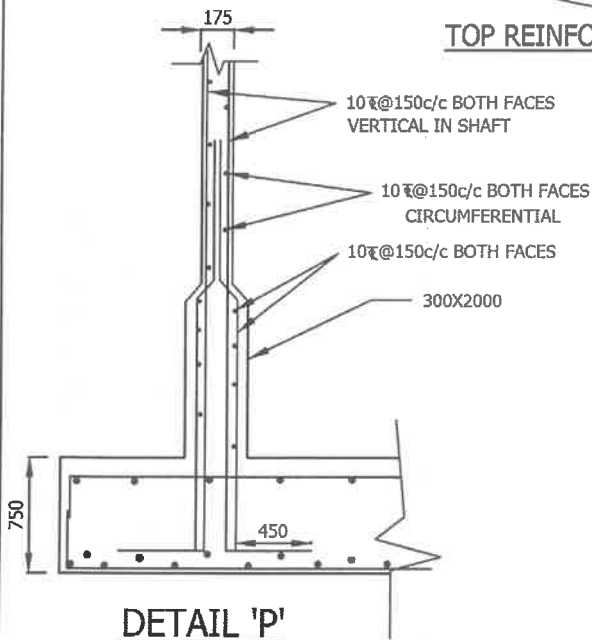


**SECTIONAL ELEVATION OF RAFT**



**TOP REINFORCEMENT**

**BOTTOM REINFORCEMENT**



**NOTE:**

1. GRADE OF CONCRETE : M30
2. GRADE OF STEEL : Fe415
3. BASIC WIND SPEED : 200 KMPH
4. S.B.C. OF SOIL : 10.0 t/m<sup>2</sup>
5. DEPTH OF FOUNDATION : 2.5m BELOW GROUND LEVEL UPTO TOP OF RAFT
6. FOR DETAILING OF REINFORCEMENT IS SP-34 SHALL BE FOLLOWED
7. PROVISIONS GIVEN IN IS 456-2000, IS 3370(PART-IV) SHALL BE FOLLOWED
8. PROVIDE SAND FILLING AS PER SITE CONDITION

*AEE*  
AEE

*DEE*  
DEE

*EE*  
EE

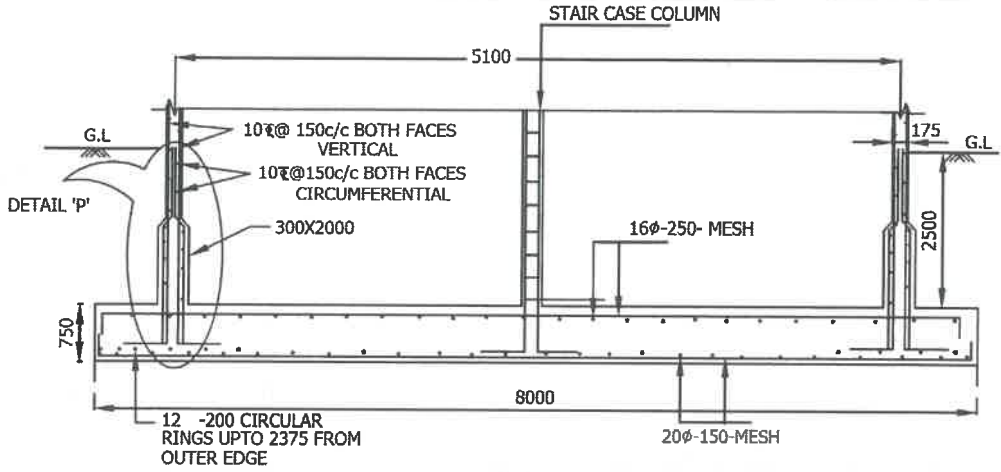
//Approved//

*Chief Engineer-II*  
Chief Engineer-II  
RWS&S, Gollapudi  
Vijayawada.

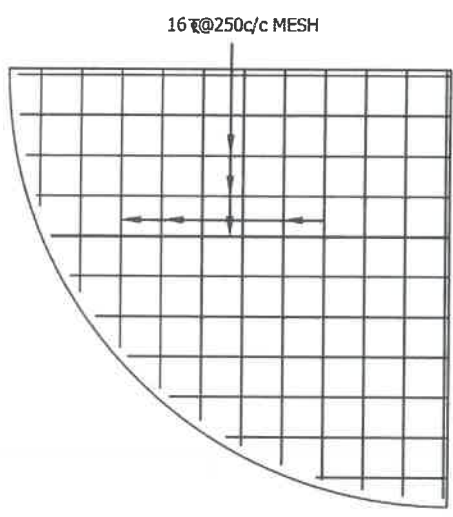
**SCHEME:**

**40KL- OHBR-22.65M STG**

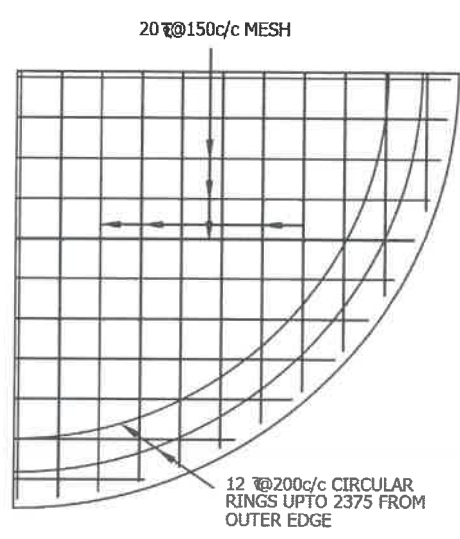
**SBC SOIL: 10.0T/M<sup>2</sup>**



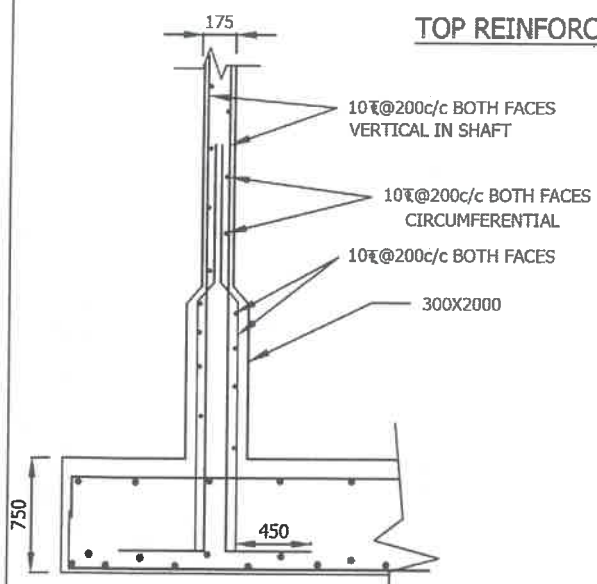
**SECTIONAL ELEVATION OF RAFT**



**TOP REINFORCEMENT**



**BOTTOM REINFORCEMENT**



**DETAIL 'P'**

- NOTE:**
- 1.GRADE OF CONCRETE : M30
  - 2.GRADE OF STEEL : Fe415
  3. BASIC WIND SPEED : 200 KMPH
  - 4.S.B.C.OF SOIL : 15.0 t/m<sup>2</sup>
  - 5.DEPTH OF FOUNDATION :2.5m BELOW GROUND LEVEL UPTO TOP OF RAFT
  6. FOR DETAILING OF REINFORCEMENT IS SP-34 SHALL BE FOLLOWED
  7. PROVISIONS GIVEN IN IS 456-2000, IS 3370(PART-IV) SHALL BE FOLLOWED
  8. PROVIDE SAND FILLING AS PER SITE CONDITION

*AEE*  
AEE

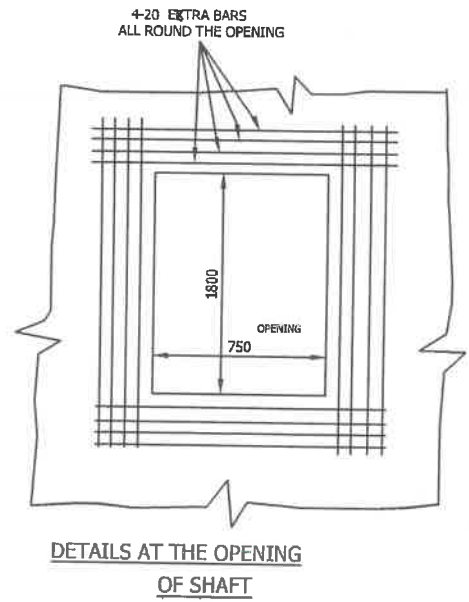
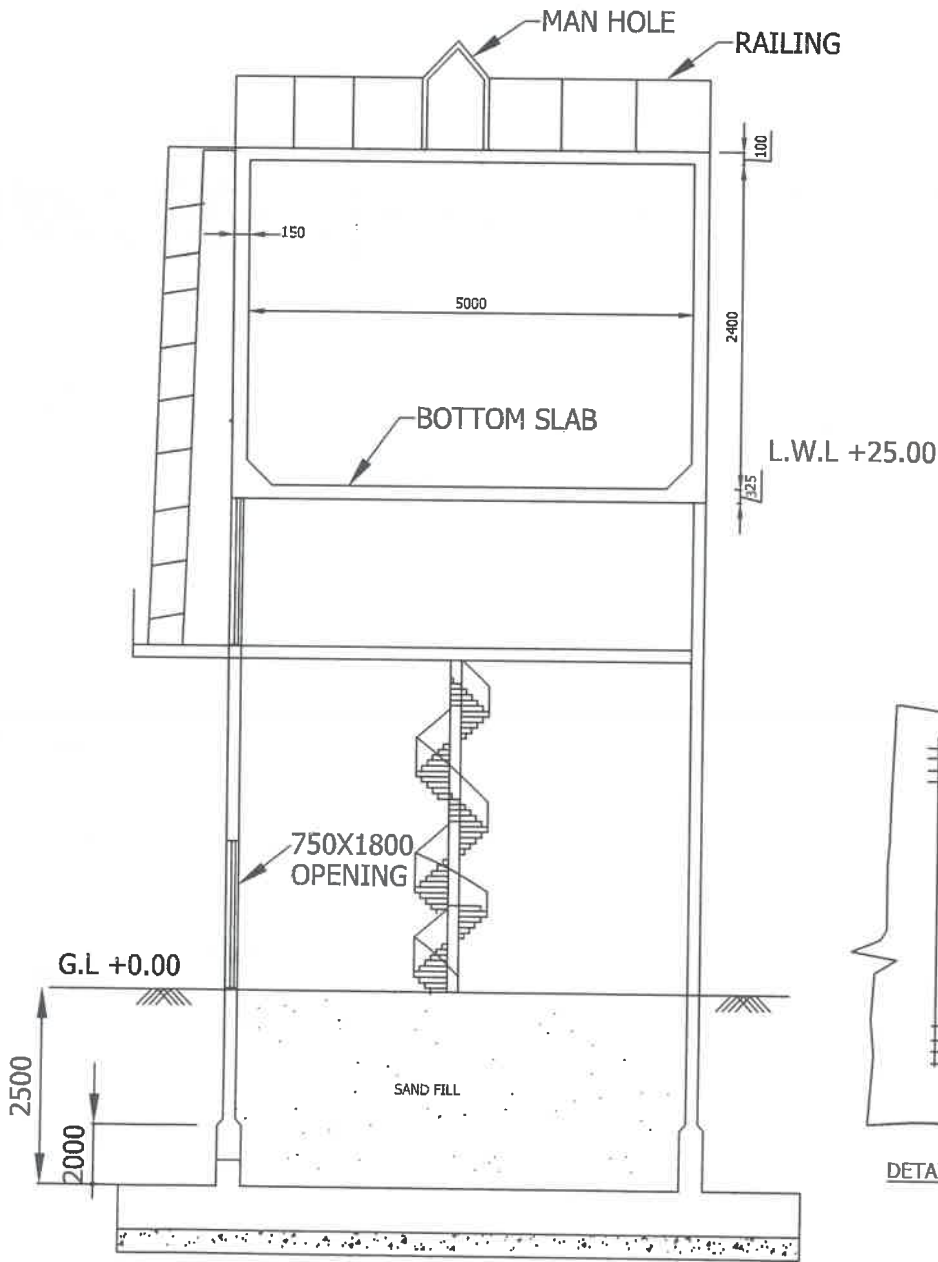
*DEE*  
DEE

*EE*  
EE

//Approved//  
*[Signature]*  
Chief Engineer-II  
RWS&S,Gollapudi  
Vijayawada.

<b>SCHEME:</b>
40KL- OHBR-22.65M STG
SBC SOIL: 15.0T/M <sup>2</sup>





*[Signature]*  
AEE

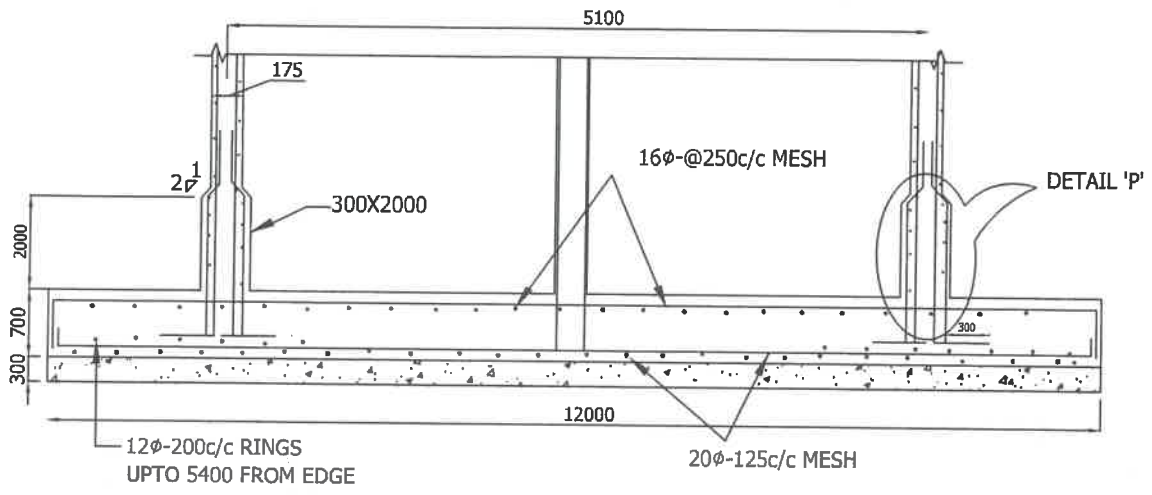
*[Signature]*  
DEE

*[Signature]*  
EE

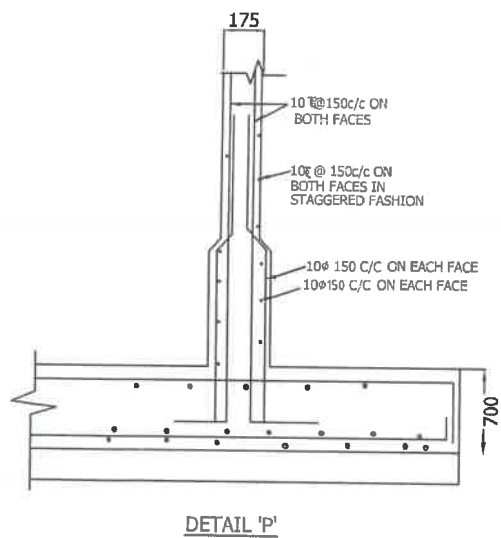
//Approved//  
*[Signature]*  
Chief Engineer-I  
RWS&S, Gollapudi  
Vijayawada.

WIND SPEED: 150&200 KMPH
SCHEME:
40KL-OHBR-25.0M
25.0M STAGING

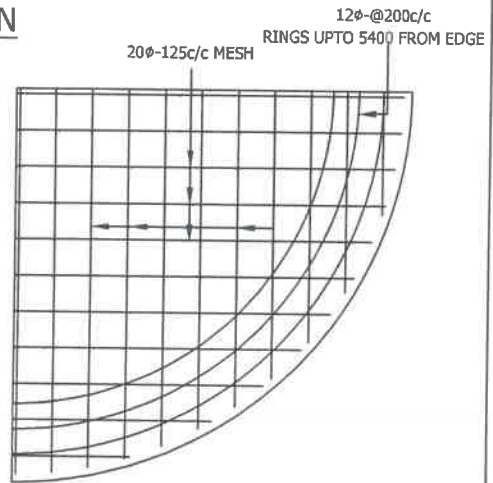
494



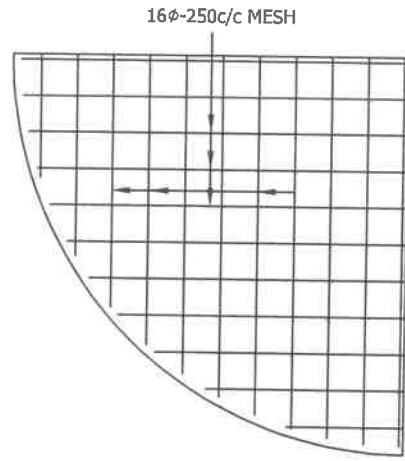
**SECTIONAL ELEVATION**



**DETAIL 'P'**



**BOTTOM REINFORCEMENT**



**TOP REINFORCEMENT**

**NOTE:**

1. S.B.C. - 5-t/m<sup>2</sup>
2. WIND SPEED IS 150KMPH
3. GRADE OF CONCRETE M30  
GRADE OF STEEL Fe415
4. DETAILING OF REINFORCEMENT SHALL BE AS PER IS SP-34
5. PROVISIONS OF IS456, IS3370 SHALL BE FOLLOWED

*[Signature]*  
AEE

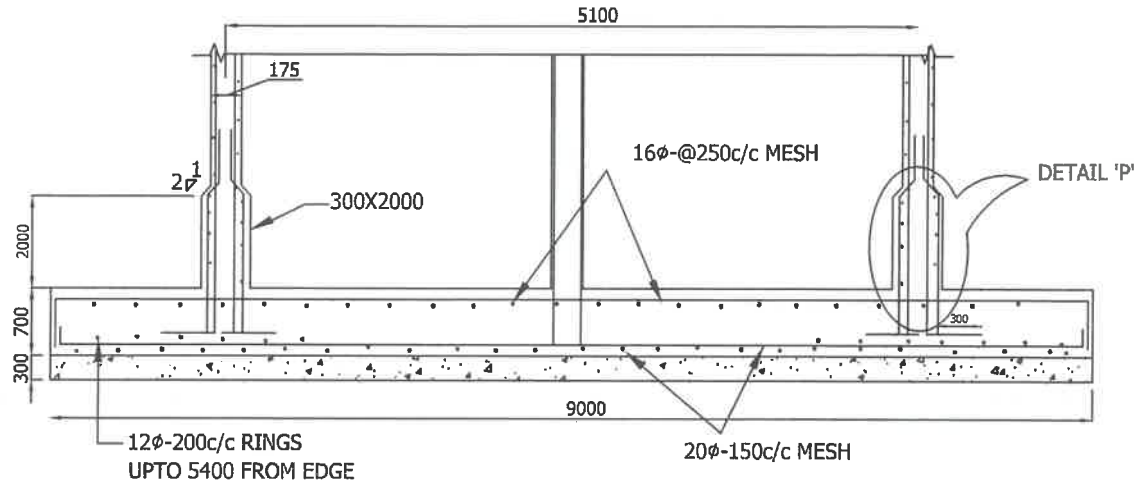
*[Signature]*  
DEE

*[Signature]*  
EE

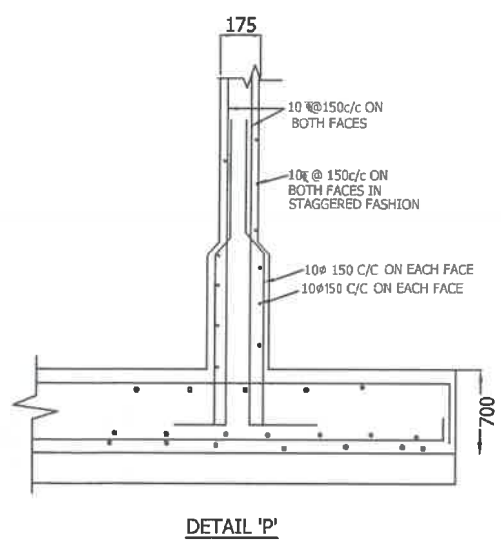
//Approved//  
*[Signature]*  
Chief Engineer-II  
RWS&S, Gollapudi  
Vijayawada.

<b>SCHEME:</b>
40KL O.H.B.R
25M STAGING
SBC: 5T/M <sup>2</sup>

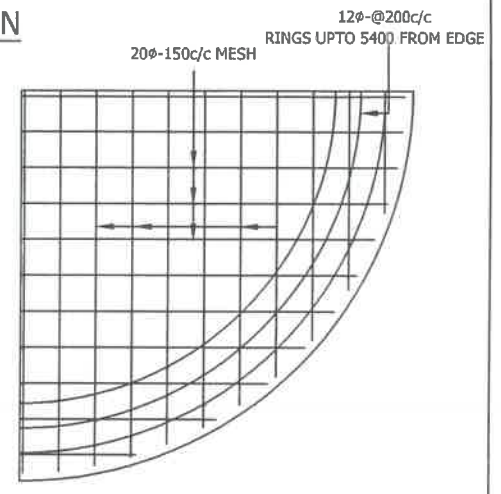
495



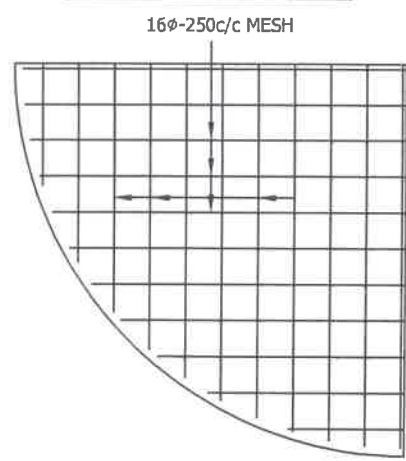
**SECTIONAL ELEVATION**



**DETAIL 'P'**



**BOTTOM REINFORCEMENT**



**TOP REINFORCEMENT**

- NOTE:**
1. S.B.C. -10-t/m<sup>2</sup>
  2. WIND SPEED IS 150KMPH
  3. GRADE OF CONCRETE M30  
GRADE OF STEEL Fe415
  4. DETAILING OF REINFORCEMENT SHALL BE AS PER IS SP-34
  5. PROVISIONS OF IS456, IS3370 SHALL BE FOLLOWED

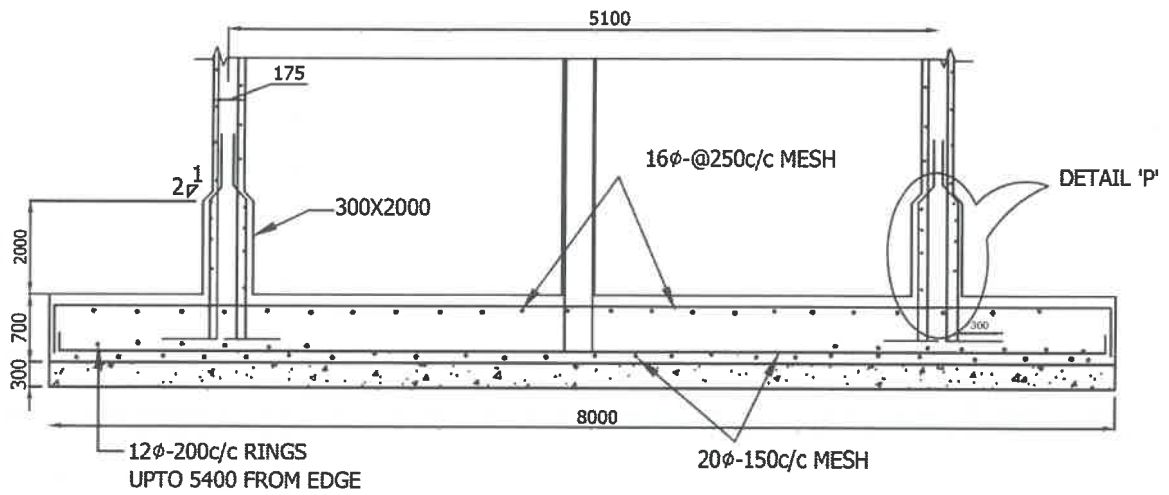
*[Signature]*  
AEE

*[Signature]*  
DEE

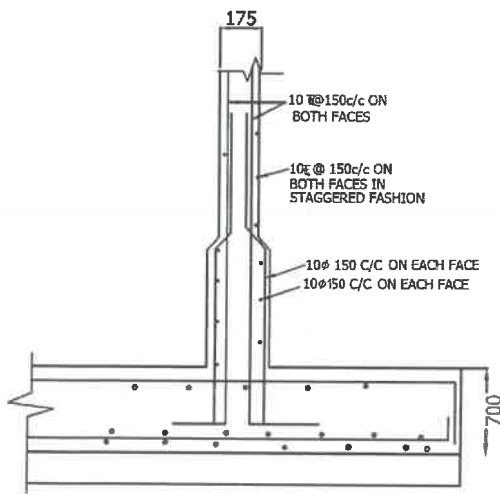
*[Signature]*  
EE

//Approved//  
*[Signature]*  
Chief Engineer-II  
RWS&S, Gollapudi  
Vijayawada.

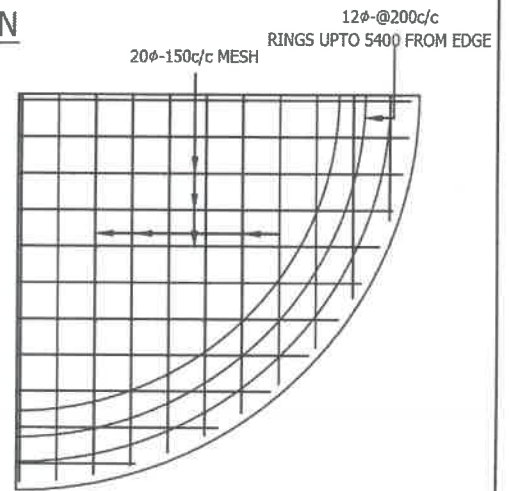
SCHEME:
40KL O.H.B.R
25M STAGING
SBC:10T/M <sup>2</sup>



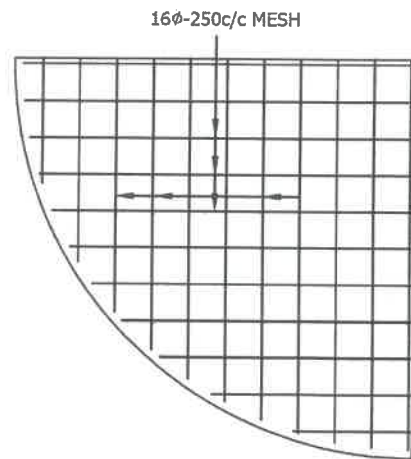
**SECTIONAL ELEVATION**



**DETAIL 'P'**



**BOTTOM REINFORCEMENT**



**TOP REINFORCEMENT**

**NOTE:**

1. S.B.C. -15-t/m<sup>2</sup>
2. WIND SPEED IS 150KMPH
3. GRADE OF CONCRETE M30  
GRADE OF STEEL Fe415
4. DETAILING OF REINFORCEMENT SHALL BE AS PER IS SP-34
5. PROVISIONS OF IS456, IS3370 SHALL BE FOLLOWED

*[Signature]*  
AEE

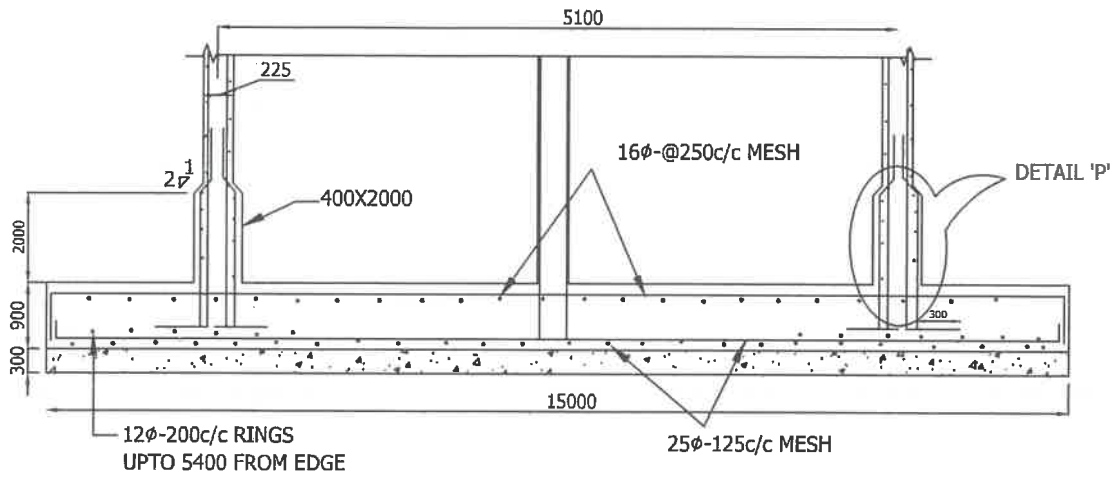
*[Signature]*  
DEE

*[Signature]*  
EE

//Approved//

*[Signature]*  
Chief Engineer-II  
RWS&S, Gollapudi  
Vijayawada.

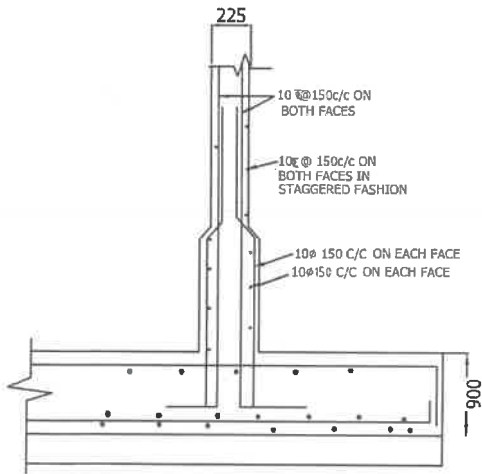
SCHEME:
40KL O.H.B.R
25M STAGING
SBC:15T/M <sup>2</sup>



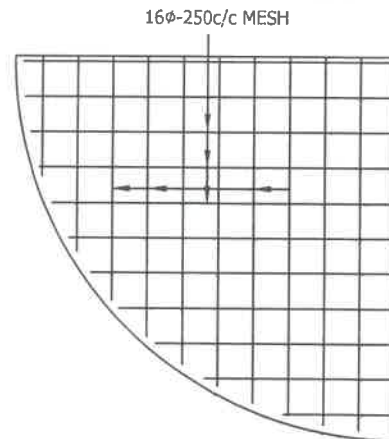
**SECTIONAL ELEVATION**



**BOTTOM REINFORCEMENT**



**DETAIL 'P'**



**TOP REINFORCEMENT**

**NOTE:**

1. S.B.C. - 5-t/m<sup>2</sup>
2. WIND SPEED IS 200KMPH
3. GRADE OF CONCRETE M30  
GRADE OF STEEL Fe415
4. DETAILING OF REINFORCEMENT SHALL BE AS PER IS SP-34
5. PROVISIONS OF IS456, IS3370 SHALL BE FOLLOWED

*[Signature]*  
AEE

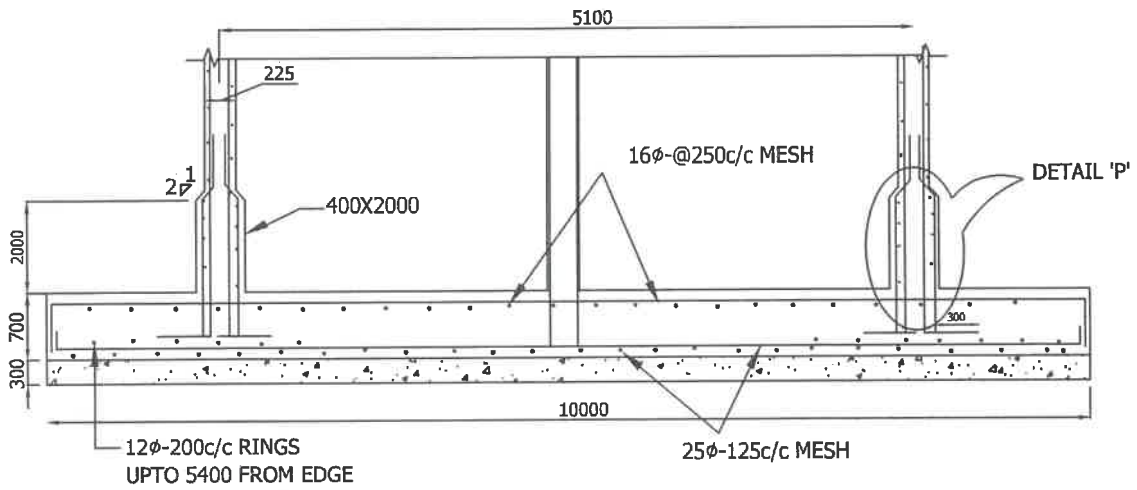
*[Signature]*  
DEE

*[Signature]*  
EE

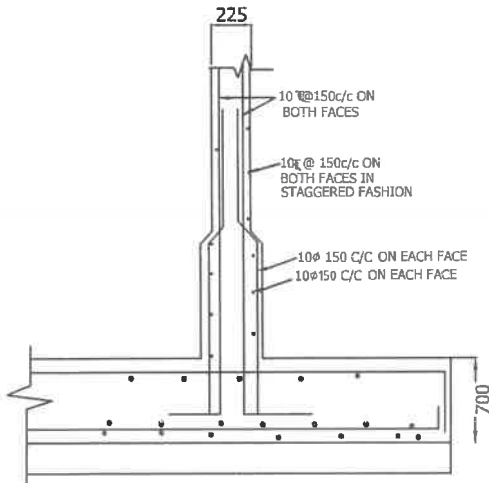
//Approved//

*[Signature]*  
Chief Engineer-II  
RWS&S, Gollapudi  
Vijayawada.

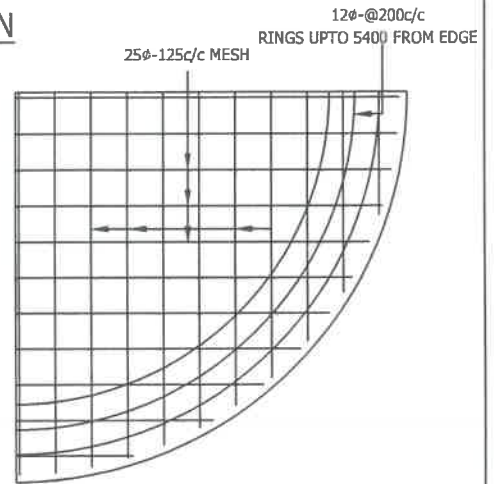
SCHEME:
40KL O.H.B.R
25M STAGING
SBC: 5T/M <sup>2</sup>



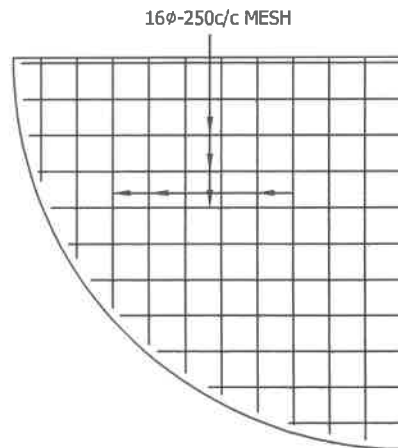
**SECTIONAL ELEVATION**



**DETAIL 'P'**



**BOTTOM REINFORCEMENT**



**TOP REINFORCEMENT**

**NOTE:**

1. S.B.C. - 10-t/m<sup>2</sup>
2. WIND SPEED IS 200KMPH
3. GRADE OF CONCRETE M30  
GRADE OF STEEL Fe415
4. DETAILING OF REINFORCEMENT SHALL BE AS PER IS SP-34
5. PROVISIONS OF IS456, IS3370 SHALL BE FOLLOWED

*[Signature]*  
AEE

*[Signature]*  
DEE

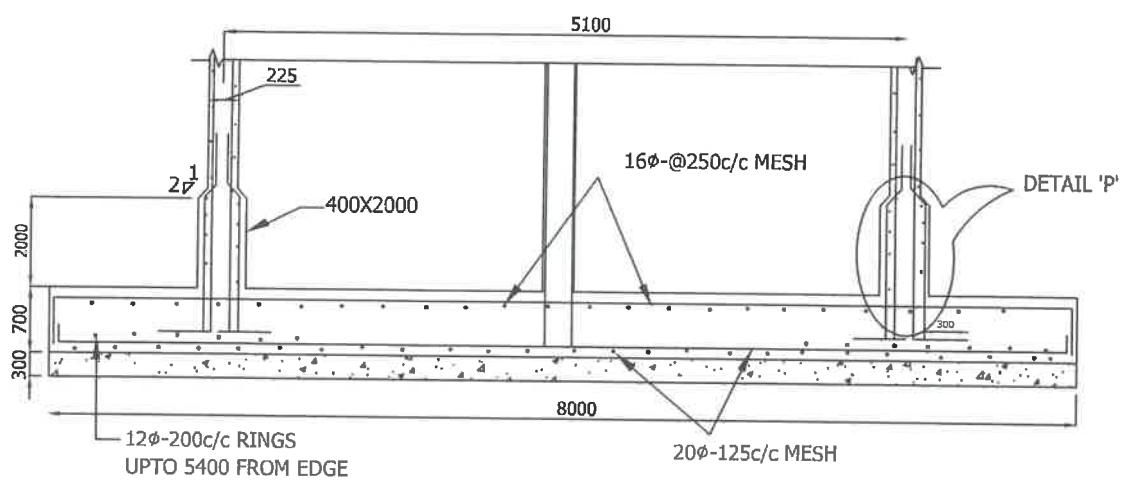
*[Signature]*  
EE

//Approved//

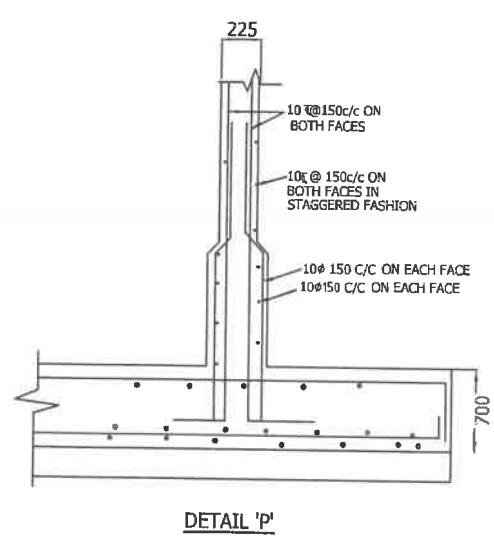
*[Signature]*  
Chief Engineer-II  
RWS&S, Gollapudi  
Vijayawada.

SCHEME:
40KL O.H.B.R
25M STAGING
SBC:10T/M <sup>2</sup>

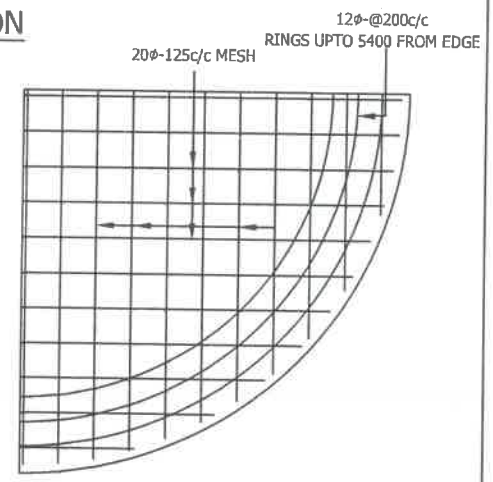




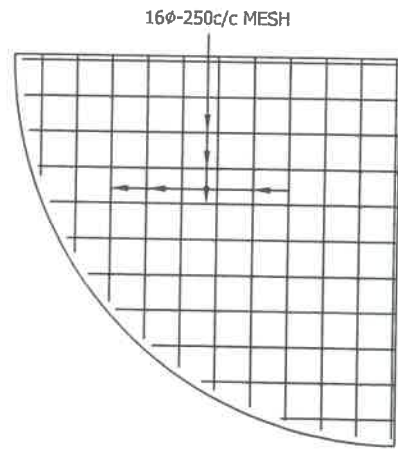
**SECTIONAL ELEVATION**



**DETAIL 'P'**



**BOTTOM REINFORCEMENT**



**TOP REINFORCEMENT**

**NOTE:**

1. S.B.C. - 15-t/m<sup>2</sup>
2. WIND SPEED IS 200KMPH
3. GRADE OF CONCRETE M30  
GRADE OF STEEL Fe415
4. DETAILING OF REINFORCEMENT SHALL BE AS PER IS SP-34
5. PROVISIONS OF IS456, IS3370 SHALL BE FOLLOWED

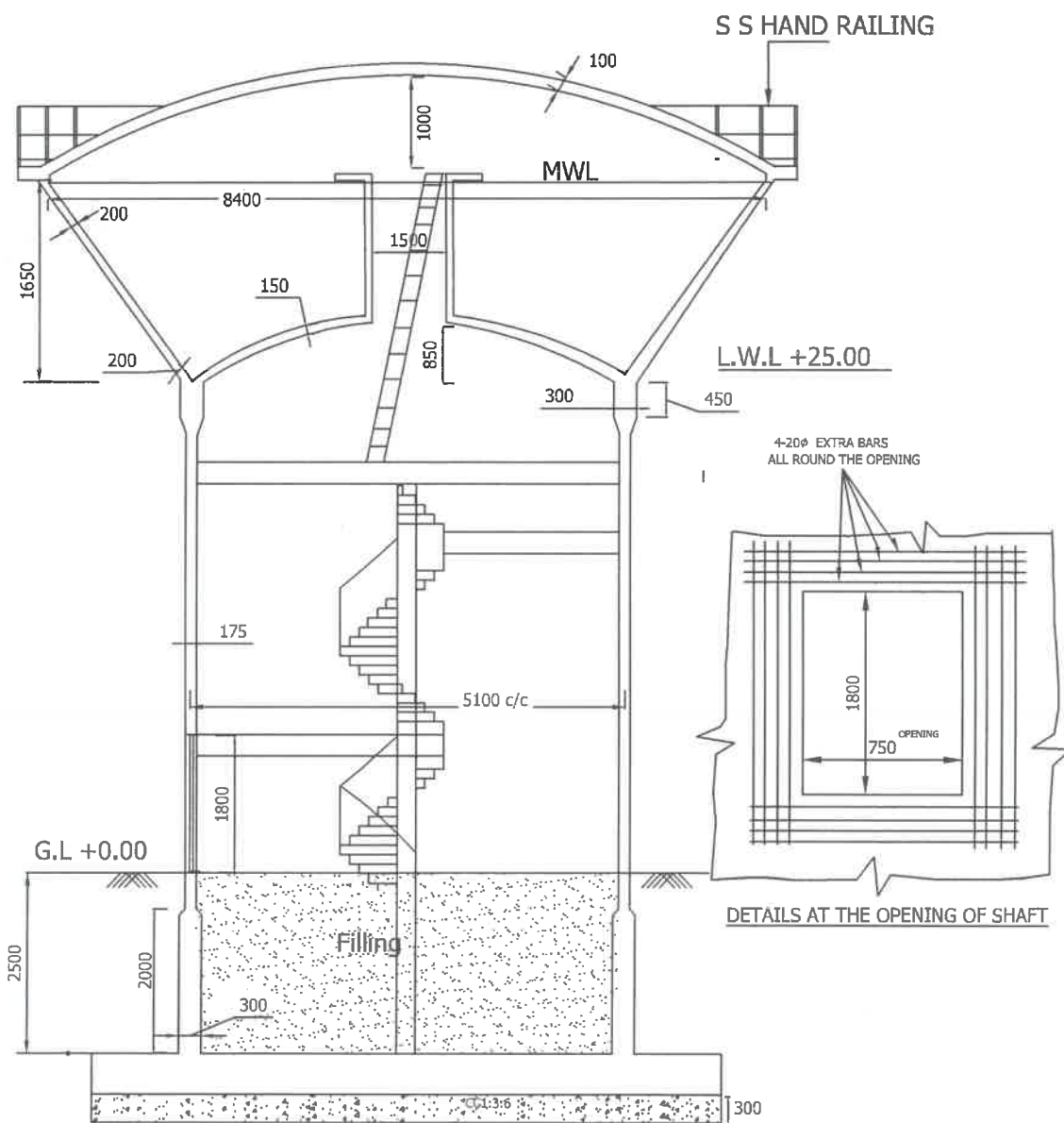
*AEE*  
AEE

*DEE*  
DEE

*EE*  
EE

//Approved//  
*[Signature]*  
Chief Engineer-II  
RWS&S, Gollapudi  
Vijayawada.

<b>SCHEME:</b>	40KL O.H.B.R
	25M STAGING
	SBC:15T/M <sup>2</sup>



*[Signature]*  
AEE

*[Signature]*  
DEE

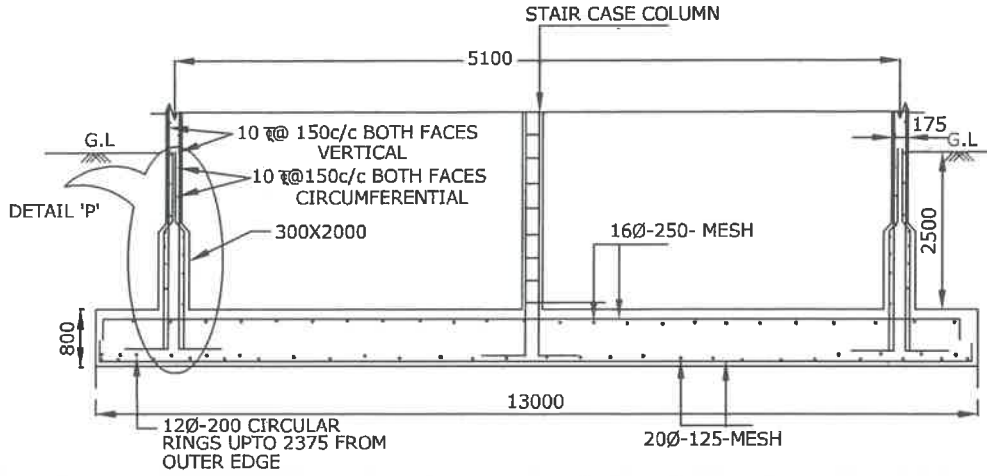
*[Signature]*  
EE

//Approved//  
*[Signature]*  
Chief Engineer-II  
RWS&S, Gollapudi  
Vijayawada.

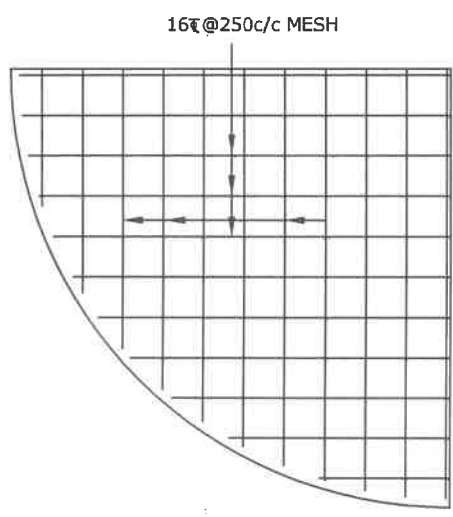
WIND SPEED: 150 KMPH

SCHEME:
40KL-OHBR-25.0M
25.0M STAGING

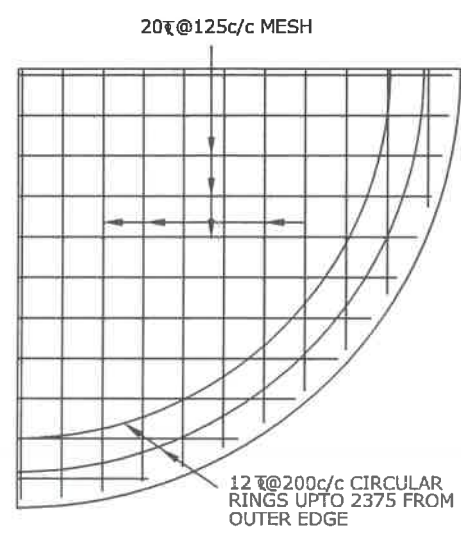
501



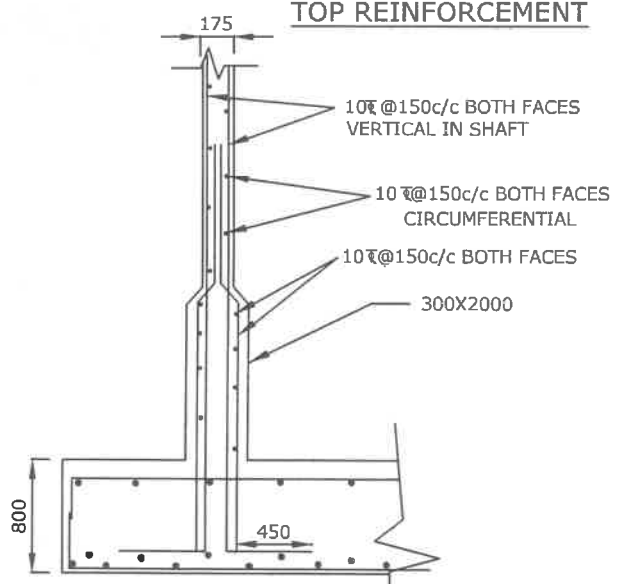
**SECTIONAL ELEVATION OF RAFT**



**TOP REINFORCEMENT**



**BOTTOM REINFORCEMENT**



**DETAIL 'P'**

- NOTE:**
1. GRADE OF CONCRETE : M30
  2. GRADE OF STEEL : Fe415
  3. BASIC WIND SPEED : 150 KMPH
  4. S.B.C.OF SOIL : 5.0 t/m<sup>2</sup>
  5. DEPTH OF FOUNDATION : 2.5m BELOW GROUND LEVEL UPTO TOP OF RAFT
  6. FOR DETAILING OF REINFORCEMENT IS SP-34 SHALL BE FOLLOWED
  7. PROVISIONS GIVEN IN IS 456-2000, IS 3370(PART-IV) SHALL BE FOLLOWED
  8. PROVIDE SAND FILLING AS PER SITE CONDITION

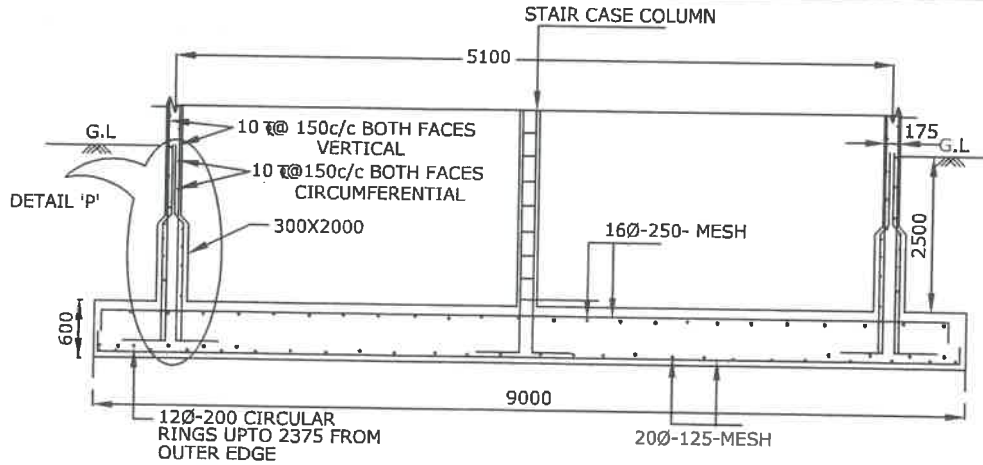
*AEE*  
AEE

*DEE*  
DEE

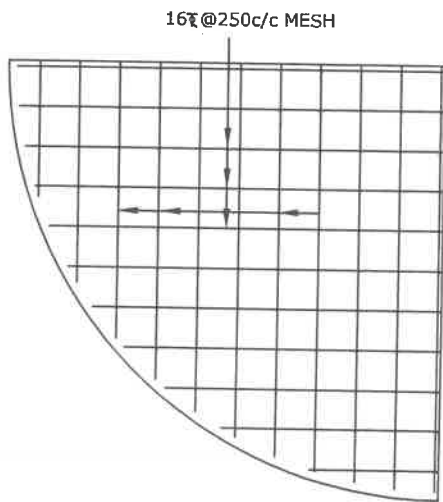
*EE*  
EE

//Approved//  
*Chief Engineer-II*  
RWS&S, Gollapudi  
Vijayawada.

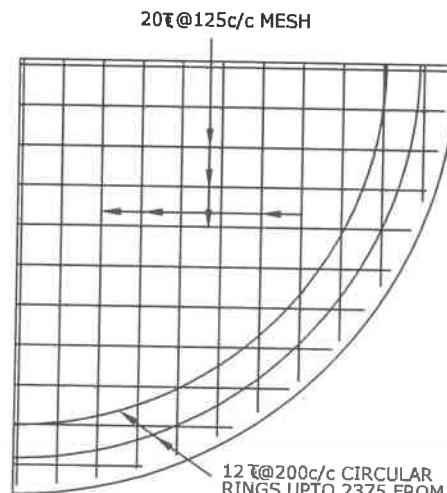
<b>SCHEME:</b>
40KL- OHBR-25.0M STG
SBC SOIL: 5.0T/M <sup>2</sup>



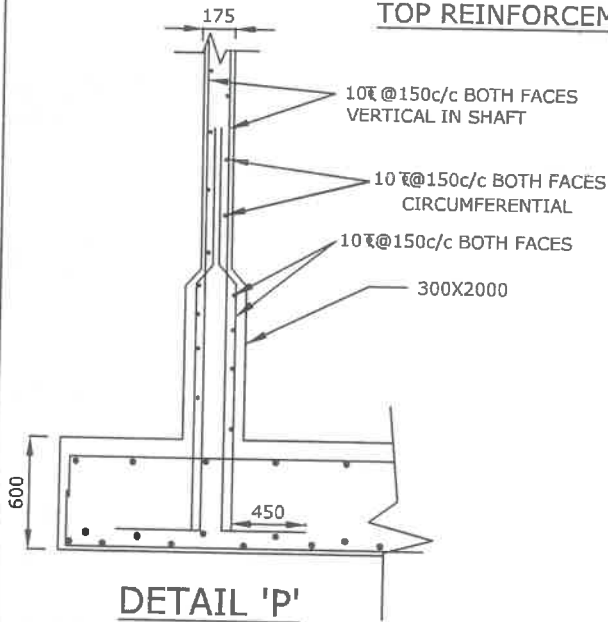
SECTIONAL ELEVATION OF RAFT



TOP REINFORCEMENT



BOTTOM REINFORCEMENT



DETAIL 'P'

NOTE:

1. GRADE OF CONCRETE : M30
2. GRADE OF STEEL : Fe415
3. BASIC WIND SPEED : 150 KMPH
4. S.B.C. OF SOIL : 10.0 t/m<sup>2</sup>
5. DEPTH OF FOUNDATION : 2.5m BELOW GROUND LEVEL UPTO TOP OF RAFT
6. FOR DETAILING OF REINFORCEMENT IS SP-34 SHALL BE FOLLOWED
7. PROVISIONS GIVEN IN IS 456-2000, IS 3370(PART-IV) SHALL BE FOLLOWED
8. PROVIDE SAND FILLING AS PER SITE CONDITION

*AEE*  
AEE

*DEE*  
DEE

*EE*  
EE

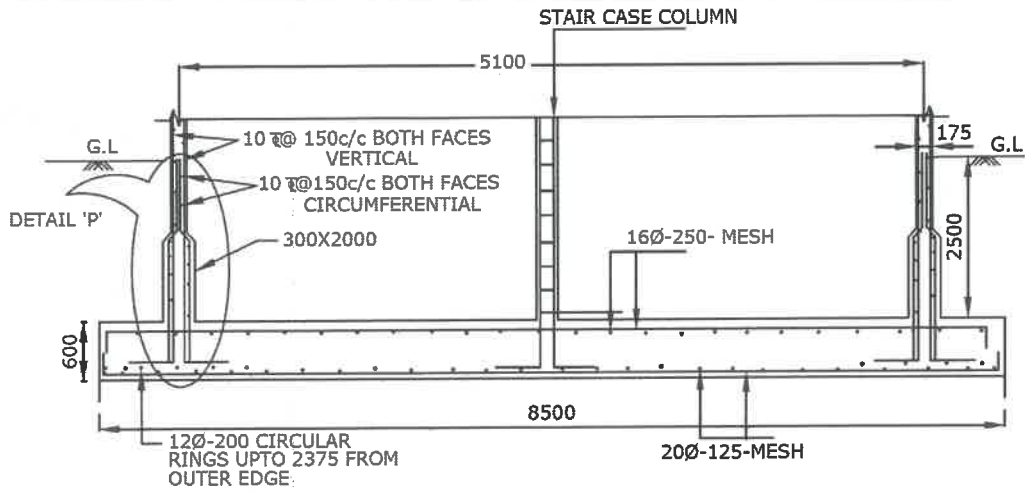
//Approved//

*DEE*  
Chief Engineer-II  
RWS&S, Goliapudi  
Vijayawada.

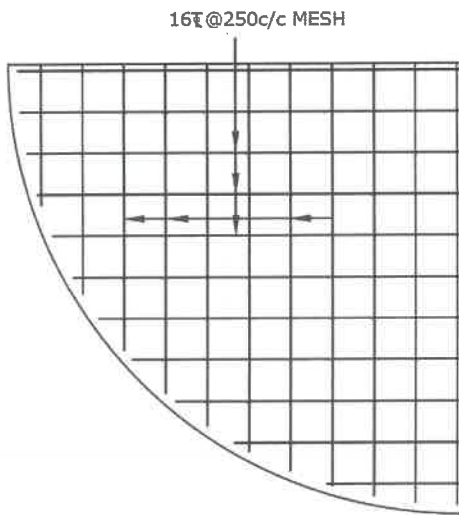
SCHEME:

40KL- OHBR-25.0M STG

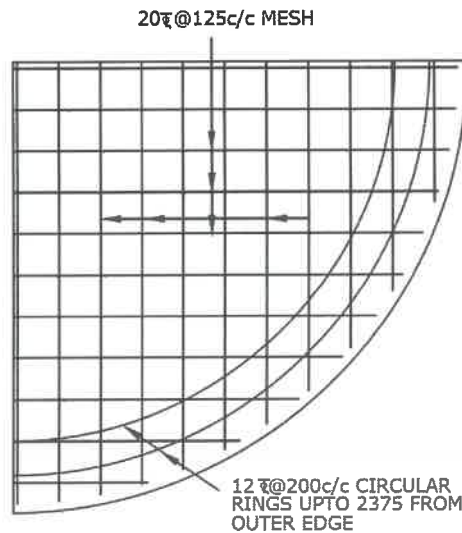
SBC SOIL: 10.0T/M<sup>2</sup>



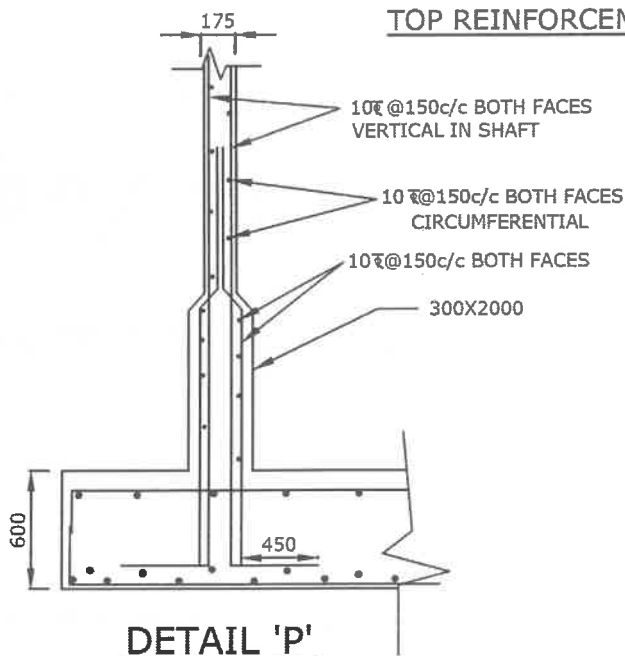
**SECTIONAL ELEVATION OF RAFT**



**TOP REINFORCEMENT**



**BOTTOM REINFORCEMENT**



**DETAIL 'P'**

**NOTE:**

1. GRADE OF CONCRETE : M30
2. GRADE OF STEEL : Fe415
3. BASIC WIND SPEED : 150 KMPH
4. S.B.C. OF SOIL : 15.0 t/m<sup>2</sup>
5. DEPTH OF FOUNDATION : 2.5m BELOW GROUND LEVEL UPTO TOP OF RAFT
6. FOR DETAILING OF REINFORCEMENT IS SP-34 SHALL BE FOLLOWED
7. PROVISIONS GIVEN IN IS 456-2000, IS 3370(PART-IV) SHALL BE FOLLOWED
8. PROVIDE SAND FILLING AS PER SITE CONDITION

*AEE*  
AEE

*DEE*  
DEE

*EE*  
EE

//Approved//

*Chief Engineer-II*  
RWS&S, Gollapudi  
Vijayawada.

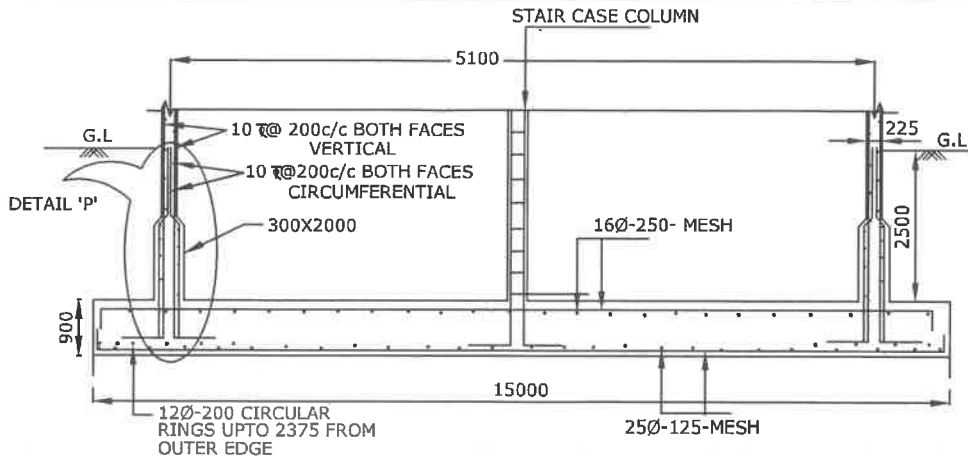
**SCHEME:**

**40KL- OHBR-25.0M STG**

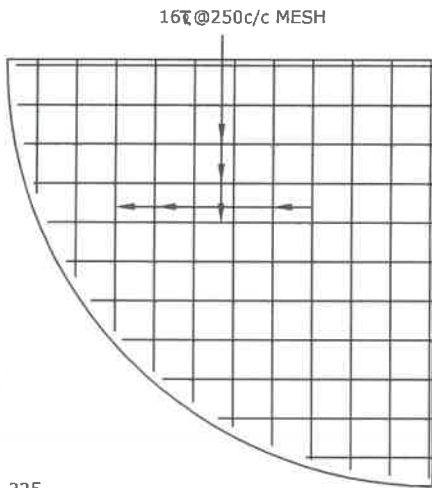
**SBC SOIL: 15.0T/M<sup>2</sup>**



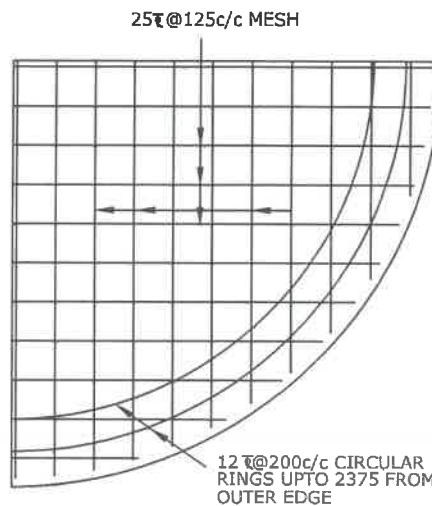




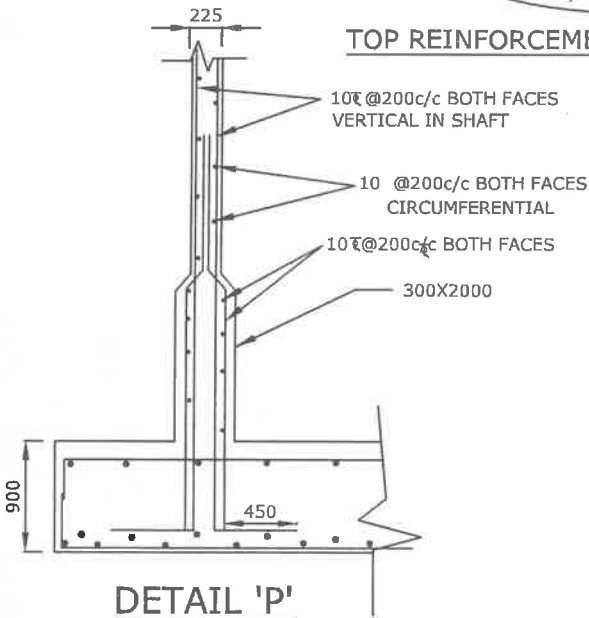
**SECTIONAL ELEVATION OF RAFT**



**TOP REINFORCEMENT**



**BOTTOM REINFORCEMENT**



**DETAIL 'P'**

**NOTE:**

1. GRADE OF CONCRETE : M30
2. GRADE OF STEEL : Fe415
3. BASIC WIND SPEED : 200 KMPH
4. S.B.C.OF SOIL : 5.0 t/m<sup>2</sup>
5. DEPTH OF FOUNDATION : 2.5m BELOW GROUND LEVEL UPTO TOP OF RAFT
6. FOR DETAILING OF REINFORCEMENT IS SP-34 SHALL BE FOLLOWED
7. PROVISIONS GIVEN IN IS 456-2000, IS 3370(PART-IV) SHALL BE FOLLOWED
8. PROVIDE SAND FILLING AS PER SITE CONDITION

*AEE*  
AEE

*DEE*  
DEE

*EE*  
EE

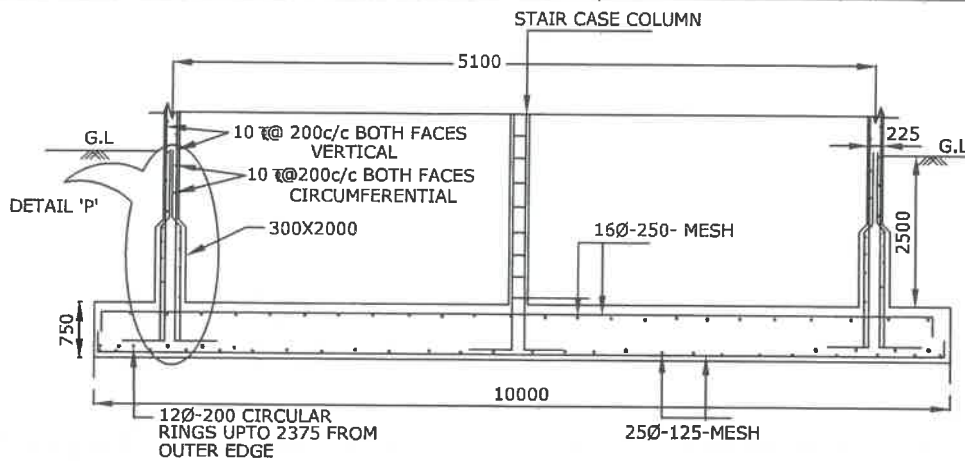
//Approved//

*Chief Engineer-II*  
RWS&S, Gollapudi  
Vijayawada.

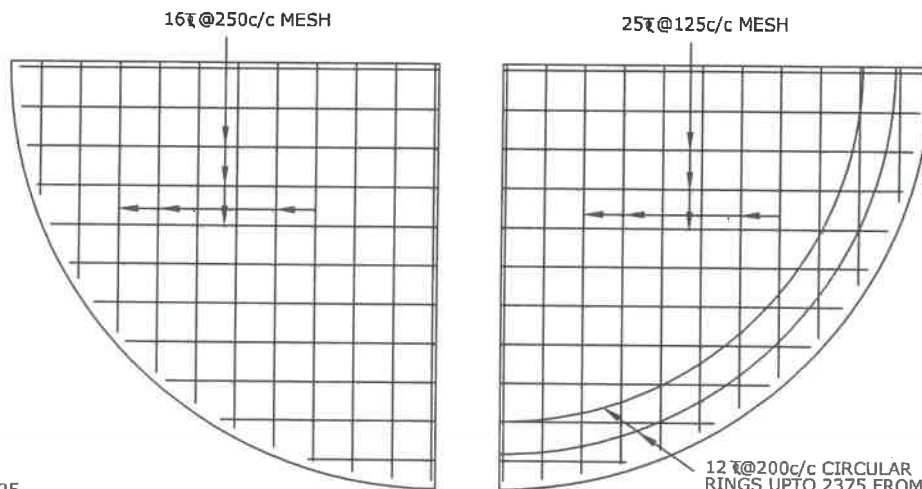
**SCHEME:**

**40KL- OHBR-25.0M STG**

**SBC SOIL: 5.0T/M<sup>2</sup>**

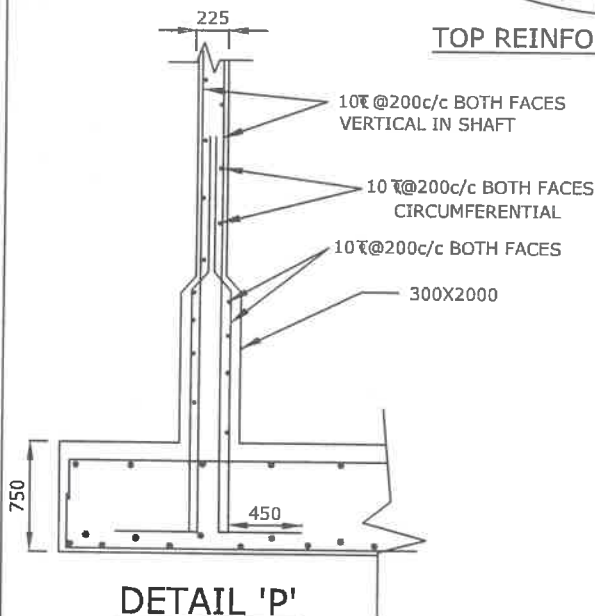


**SECTIONAL ELEVATION OF RAFT**



**TOP REINFORCEMENT**

**BOTTOM REINFORCEMENT**



**DETAIL 'P'**

**NOTE:**

1. GRADE OF CONCRETE : M30
2. GRADE OF STEEL : Fe415
3. BASIC WIND SPEED : 200 KMPH
4. S.B.C. OF SOIL : 10.0 t/m<sup>2</sup>
5. DEPTH OF FOUNDATION : 2.5m BELOW GROUND LEVEL UPTO TOP OF RAFT
6. FOR DETAILING OF REINFORCEMENT IS SP-34 SHALL BE FOLLOWED
7. PROVISIONS GIVEN IN IS 456-2000, IS 3370(PART-IV) SHALL BE FOLLOWED
8. PROVIDE SAND FILLING AS PER SITE CONDITION

*AEE*  
AEE

*DEE*  
DEE

*EE*  
EE

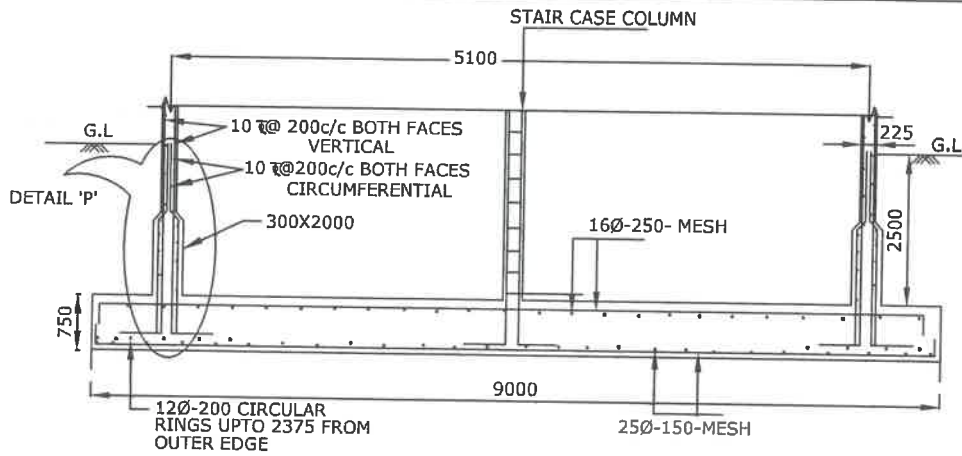
//Approved//

*[Signature]*  
Chief Engineer-II  
RWS&S, Gollapudi  
Vijayawada.

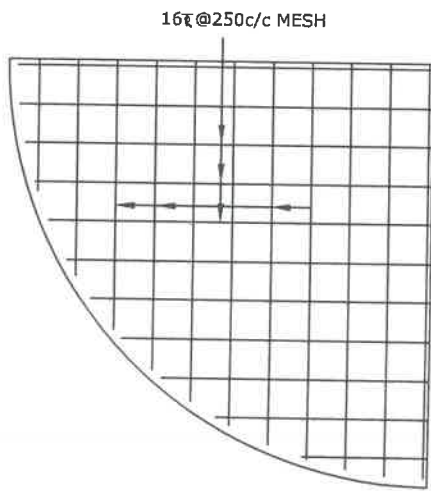
**SCHEME:**

**40KL- OHBR-25.0M STG**

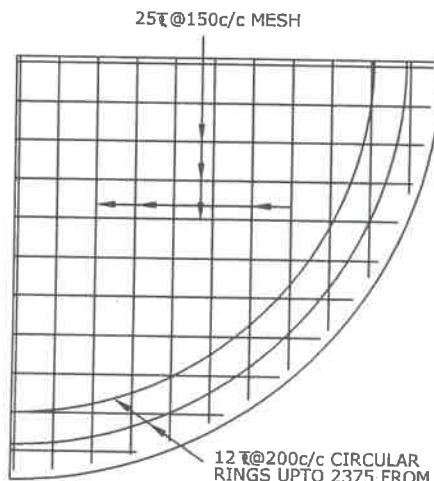
**SBC SOIL: 10.0T/M<sup>2</sup>**



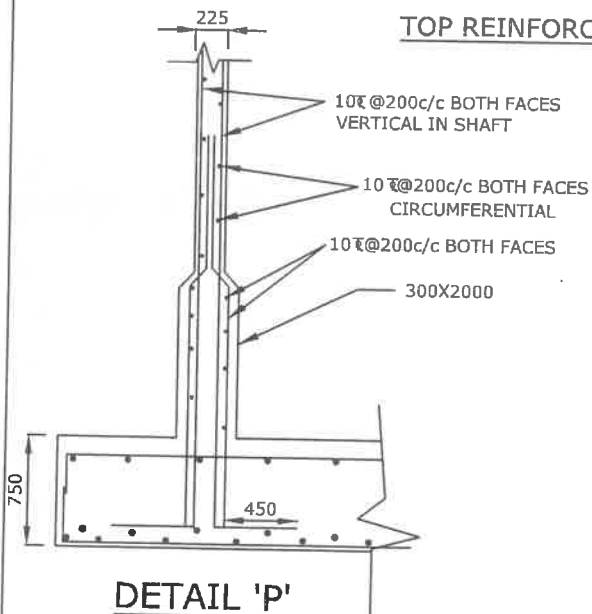
**SECTIONAL ELEVATION OF RAFT**



**TOP REINFORCEMENT**



**BOTTOM REINFORCEMENT**



**DETAIL 'P'**

**NOTE:**

1. GRADE OF CONCRETE : M30
2. GRADE OF STEEL : Fe415
3. BASIC WIND SPEED : 200 KMPH
4. S.B.C. OF SOIL : 15.0 t/m<sup>2</sup>
5. DEPTH OF FOUNDATION : 2.5m BELOW GROUND LEVEL UPTO TOP OF RAFT
6. FOR DETAILING OF REINFORCEMENT IS SP-34 SHALL BE FOLLOWED
7. PROVISIONS GIVEN IN IS 456-2000, IS 3370(PART-IV) SHALL BE FOLLOWED
8. PROVIDE SAND FILLING AS PER SITE CONDITION

*AEE*

*DEE*

*EE*

//Approved//

Chief Engineer-II  
RWS&S, Gollapudi  
Vijayawada.

**SCHEME:**

**40KL- OHBR-25.0M STG**

**SBC SOIL: 15.0T/M<sup>2</sup>**