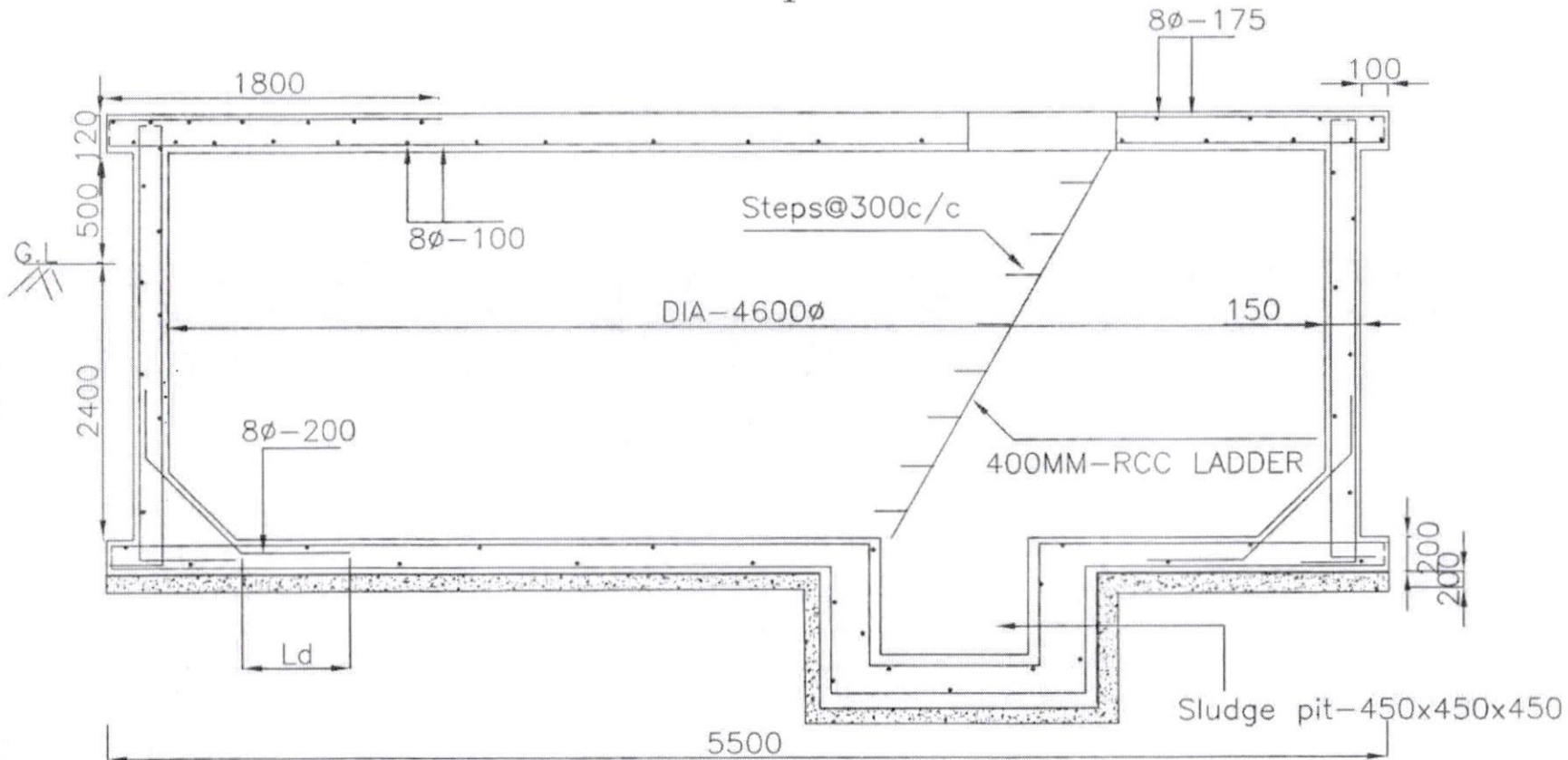


40KL Sump



All dimensions are in 'mm'
Concrete mix V.R.C.C M30
Steel Fe-415
Reinforcement Details shall be
as per IS - SP34
SBC OF SOIL ≥ 5.0 T/sqm
Depth of water table is -1.0m below GL

Note: provide sand bed as per site conditions
and verify the uplift condition before grounding
the work, if depth of water table < 1.00 m below GL

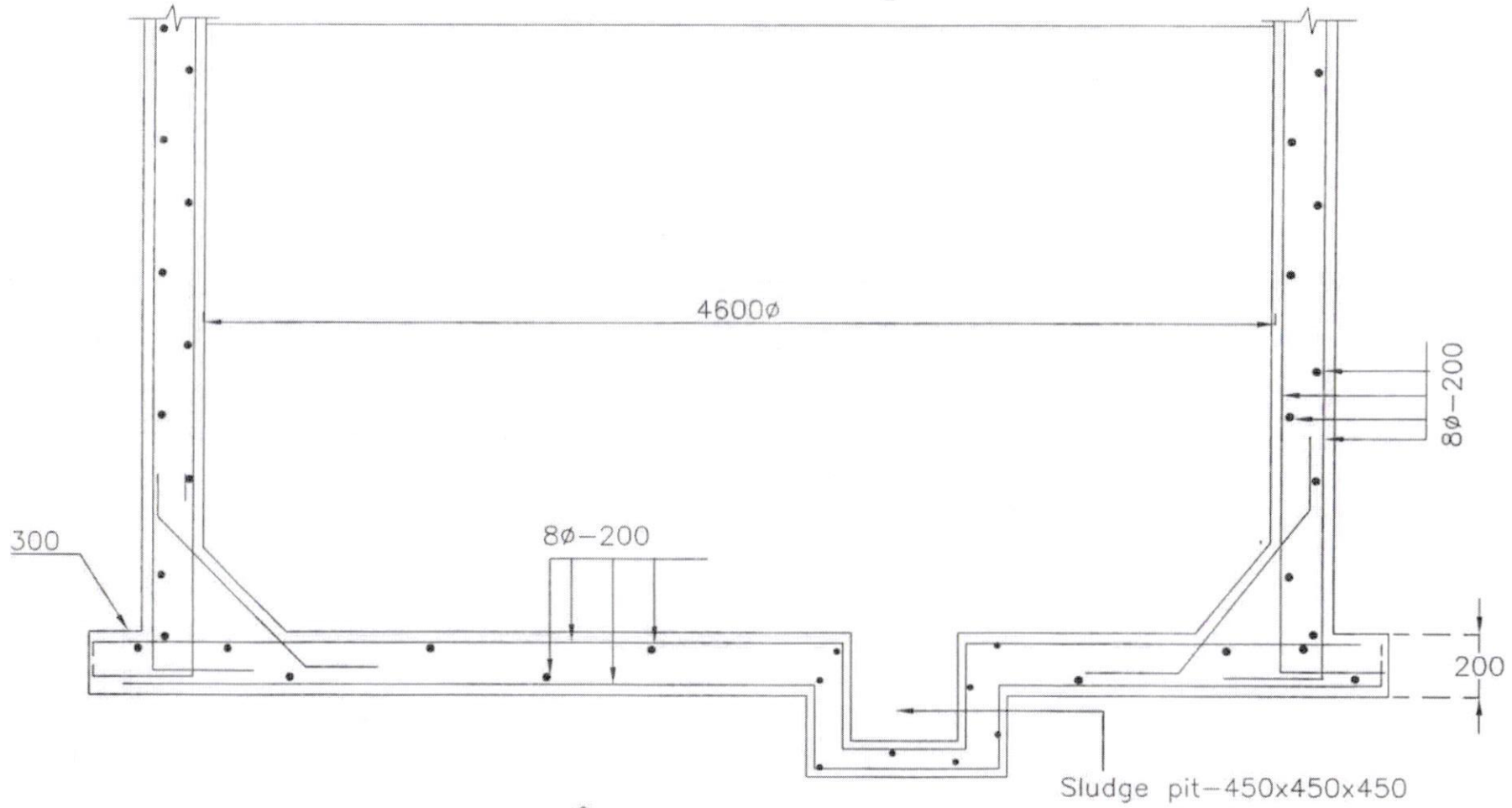
Asst Executive Engineer Dy.Executive Engineer
POR 25.1.17

Approved //
Chief Engineer-II
RWS&S, Gollapudi
Vijayawada.

SCHEME:
DWG.NO.1

40KL Sump

841



Por
Asst Executive Engineer

25.1.19
Dy.Executive Engineer

//Approved//
Chief Engineer-II
RWS&S,Gollapudi
Vijayawada.

SCHEME:
DWG.NO.2