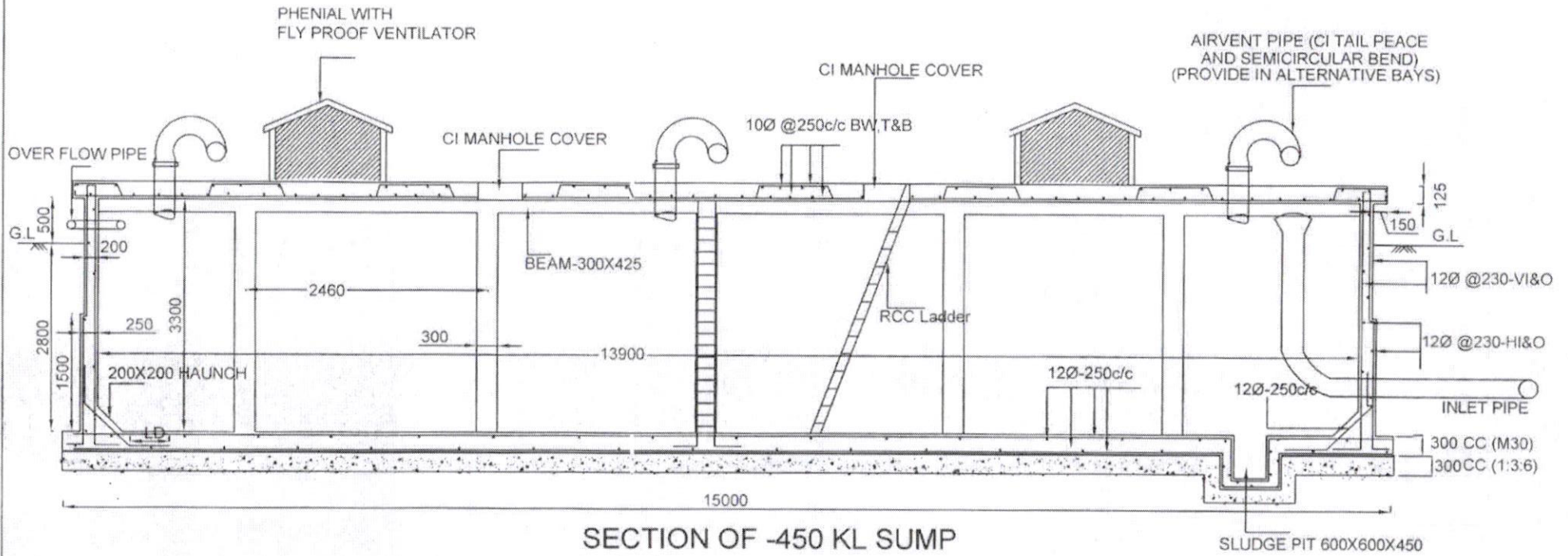
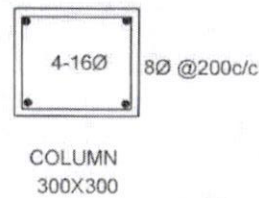
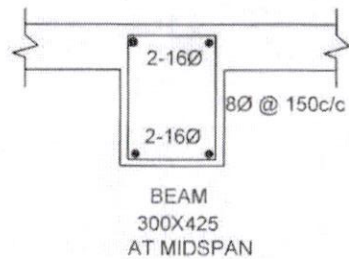
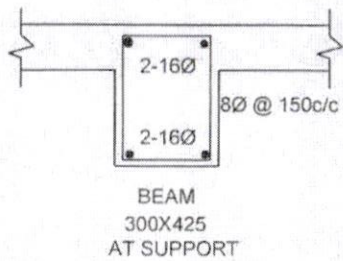


### 450 KL CAPACITY SUMP



SECTION OF -450 KL SUMP



*POR*  
Asst Executive Engineer

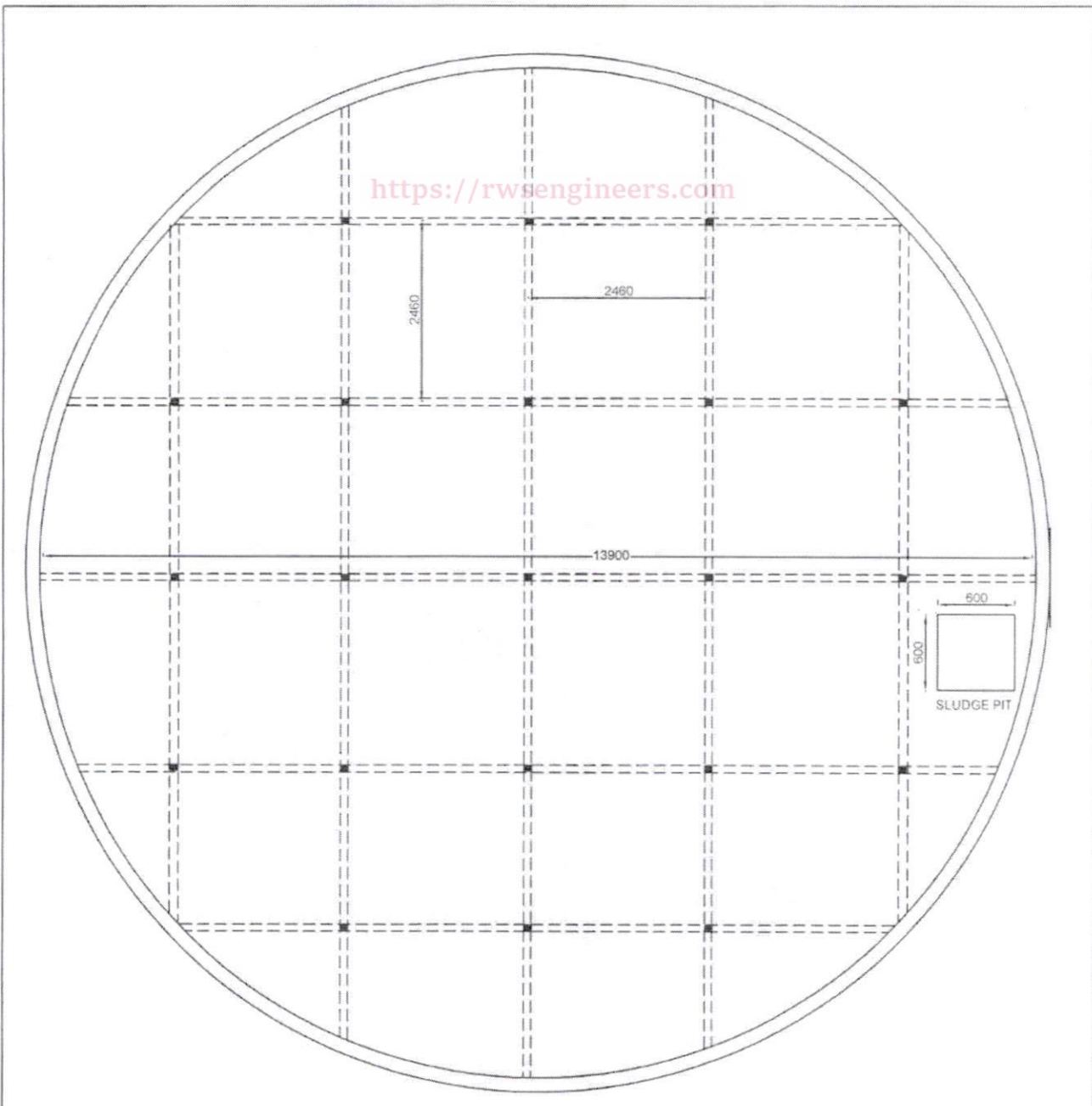
*PJB*  
25.11.19  
Dy. Executive Engineer

//Approved//  
*[Signature]*  
Chief Engineer-II  
RWS&S, Gollapudi  
Vijayawada.

SCHEME:
LOCATION:
DRG NO.

161

<https://rwsengineers.com>



### PLAN OF-450KL SUMP

**NOTE**

- 1. ALL DIMENSIONS ARE IN 'MM'
- 2. MATERIALS:  
CONCRETE M30  
STEEL Fe-415
- 3. PROVISION OF IS: 456-2000, IS: 3370 (PART I TO IV) SHALL BE FOLLOWED
- 4. FLOW ARRANGEMENT, MAN HOLE, VENTILATOR SHOULD BE PROVIDED
- 5. THE SUMP TOP SLAB IS NOT DESIGNED FOR ANY VERTICAL LOAD AND IT SHOULD BE PROTECTED AROUND BY SUITABLE MEANS
- 6. SBC  $\geq 5T/Sqm$

Note: provide sand bed as per site conditions and verify the uplift condition before grounding the work, if depth of water table  $< 1.50m$  below GL

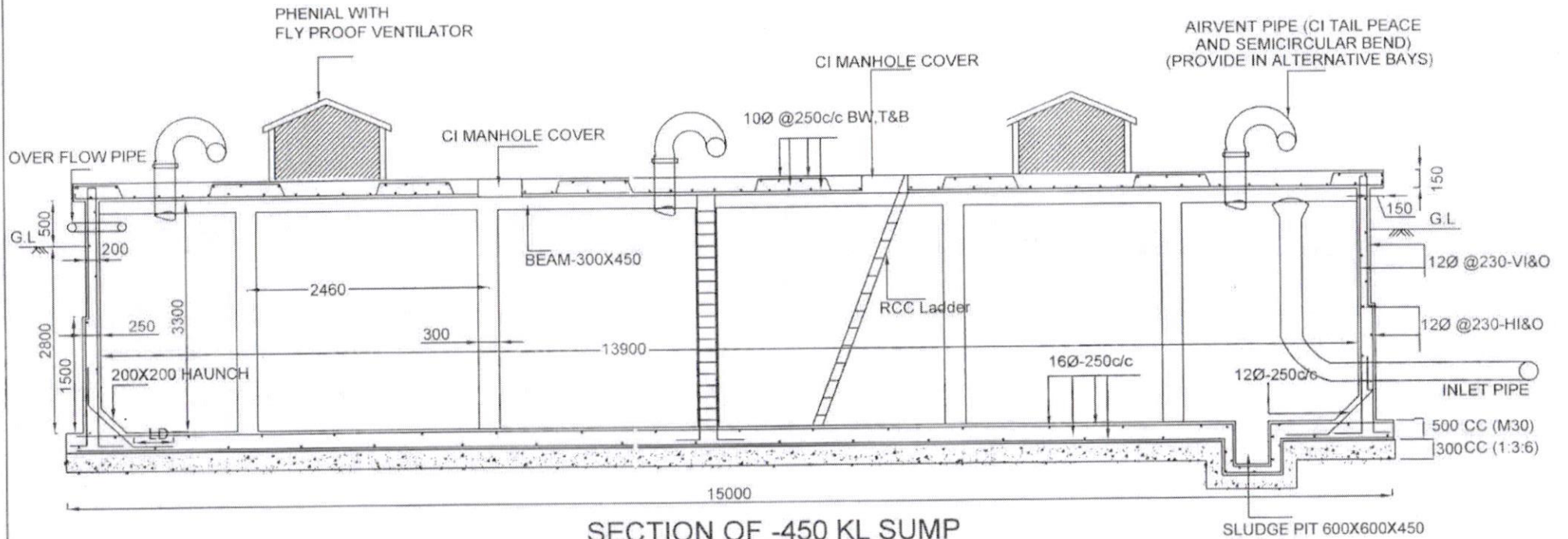
*RK*  
Asst Executive Engineer

*RJB*  
25.11.19  
Dy. Executive Engineer

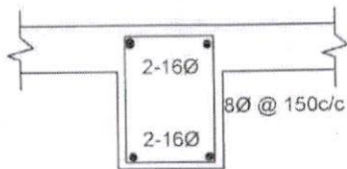
//Approved  
*[Signature]*  
Chief Engineer-II  
RWS&S, Gollapudi  
Vijayawada.

SCHEME:
LOCATION:
DRG NO.

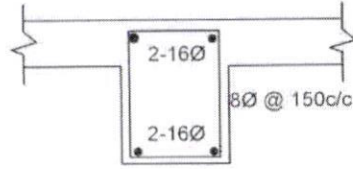
# 450 KL CAPACITY SUMP



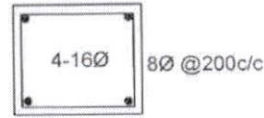
## SECTION OF -450 KL SUMP



BEAM  
300X450  
AT SUPPORT



BEAM  
300X450  
AT MIDSPAN



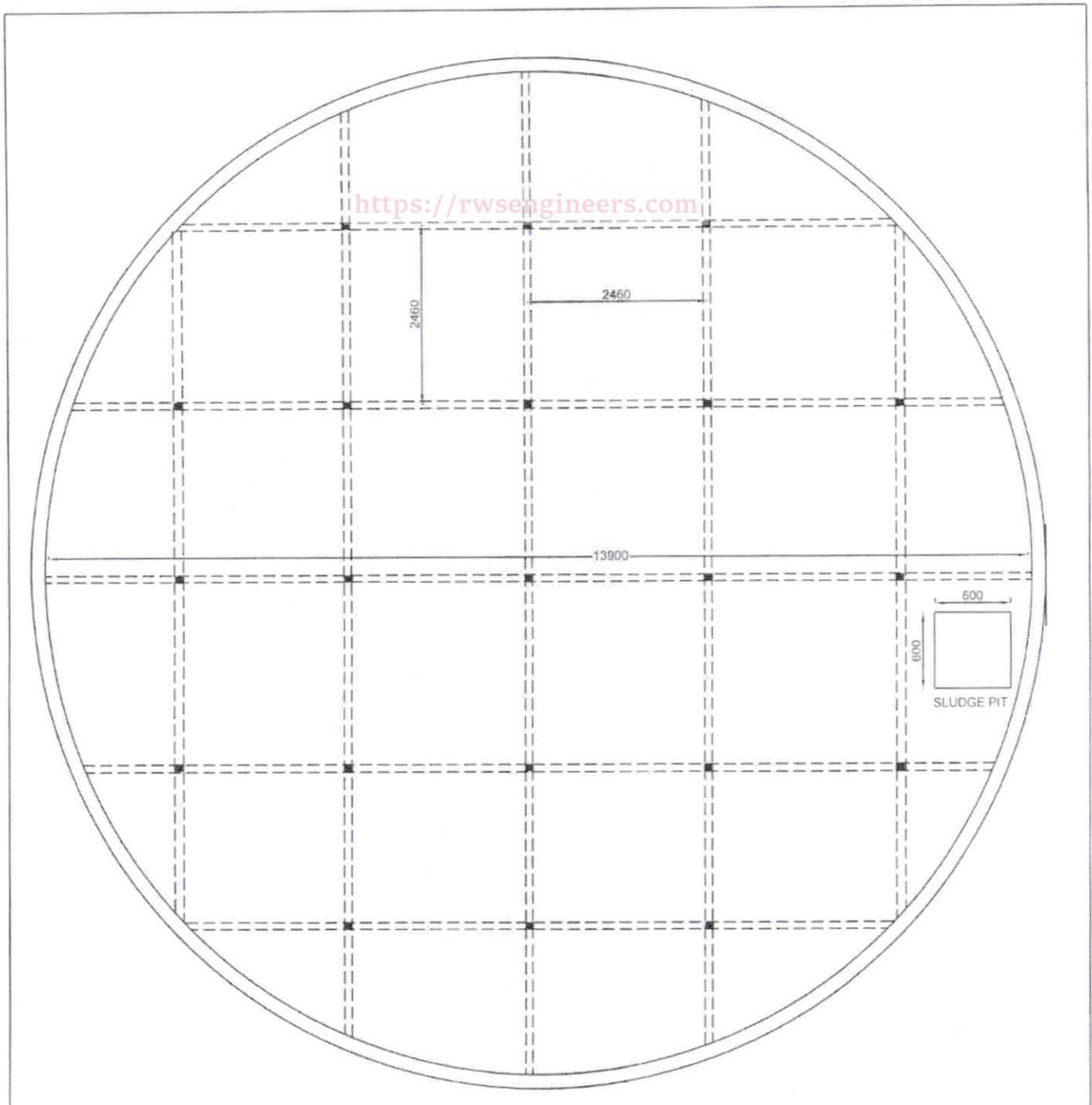
COLUMN  
300X300

*PQR*  
Asst Executive Engineer

*RSM*  
25.1.19  
Dy. Executive Engineer

//Approved//  
*[Signature]*  
Chief Engineer-II  
RWS&S, Gollapudi  
Vijayawada.

SCHEME:
LOCATION:
DRG NO.



PLAN OF-450KL SUMP

NOTE

1. ALL DIMENSIONS ARE IN 'MM'
2. MATERIALS:  
CONCRETE:M30  
STEEL :Fe-415
3. PROVISION OF IS:456-2000,IS:3370(PART I TO IV) SHALL BE FOLLOWED
4. FLOW ARRANGEMENT,MAN HOLE ,VENTILATOR SHOULD BE PROVIDED
5. THE SUMP TOP SLAB IS NOT DESIGNED FOR ANY VERTICAL LOAD AND IT SHOULD BE PROTECTED AROUND BY SUITABLE MEANS
6. SBC >=5T/Sqm
7. SUMP IS DESIGNED FOR UPLIFT

Note: provide sand bed as per site conditions and verify the uplift condition before grounding the work, if depth of water table < 1.00m below GL

*PUR*  
Asst Executive Engineer

*RJD*  
25-1-19  
Dy. Executive Engineer

//Approved//  
Chief Engineer-II  
RVS&S,Gollapudi  
Vijayawada.

SCHEME:
LOCATION:
DRG NO.