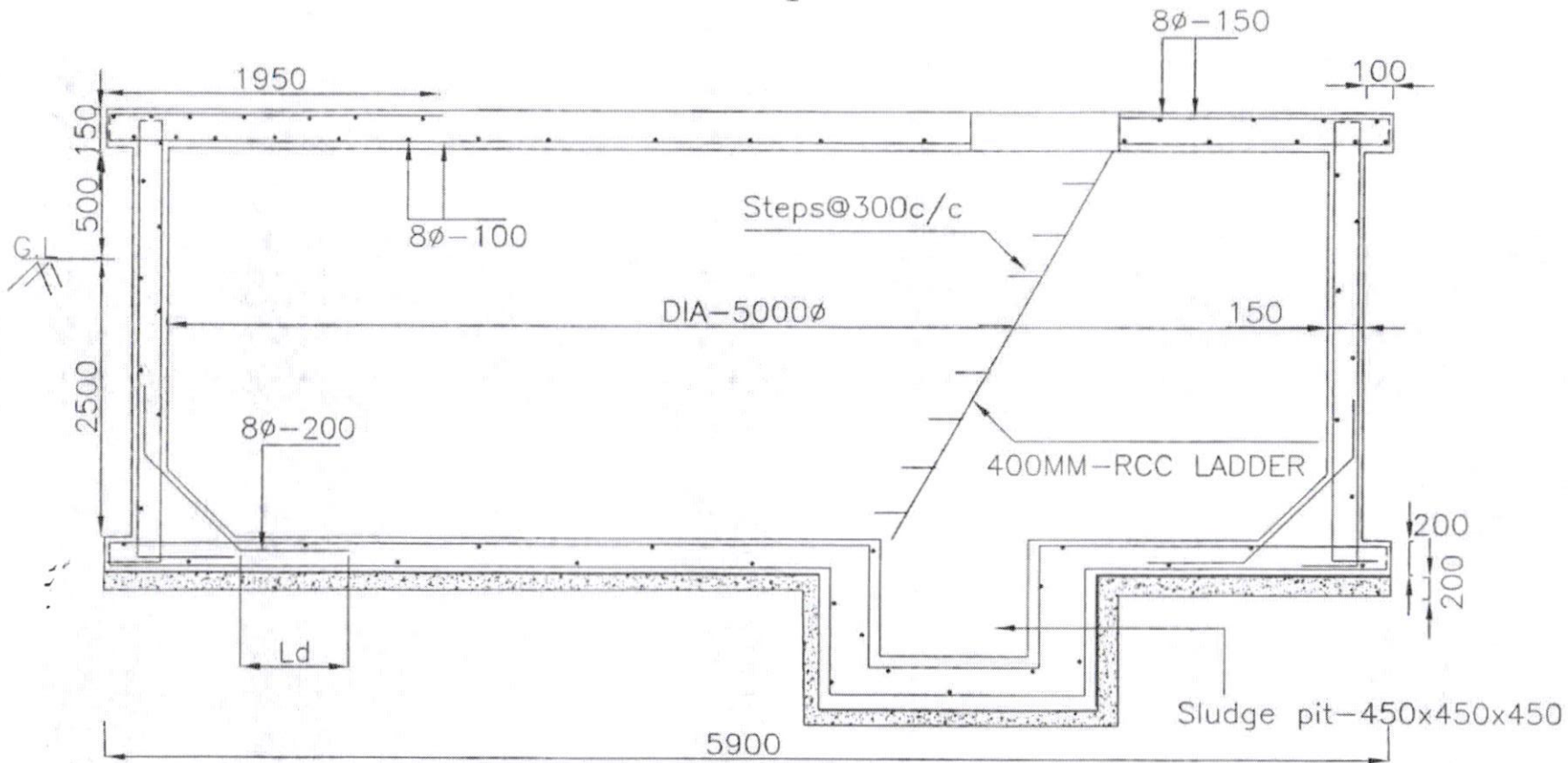


50KL Sump



All dimensions are in 'mm'
Concrete mix V.R.C.C M30

Steel Fe-415
Reinforcement Details shall be
as per IS - SP34
SBC OF SOIL ≥ 5.0 T/sqm

Depth of water table is -1.2m below GL

Por
Asst Executive Engineer
Dy. Executive Engineer
25-1-19

// Approved //
[Signature]
Chief Engineer-II
RWS&S, Gollapudi
Vijayawada.

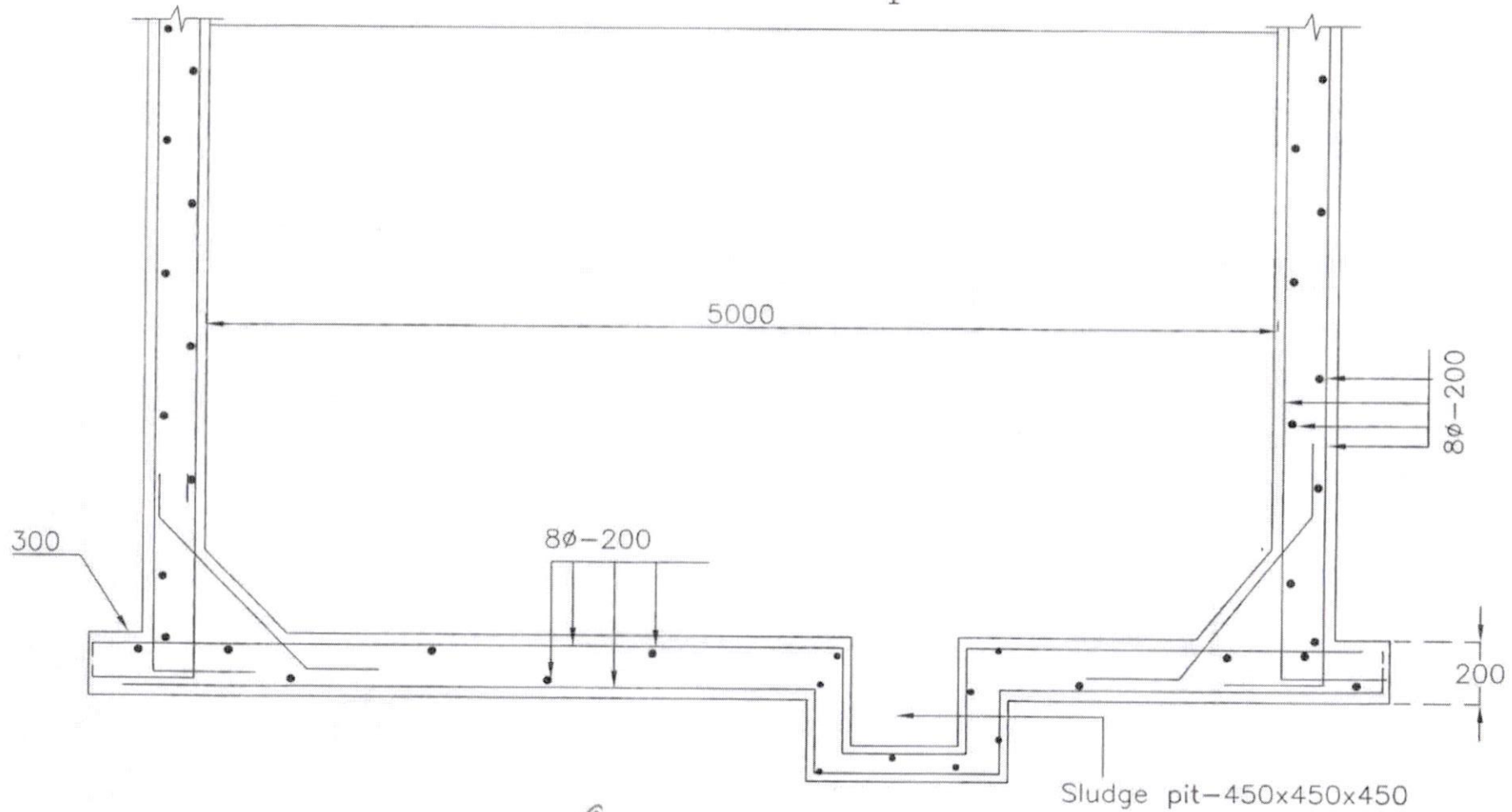
Note: provide sand bed as per site conditions
and verify the uplift condition before grounding
the work, if depth of water table < 1.20 m below GL

SCHEME:

DWG.NO.1

50KL Sump

151



Por
Asst. Executive Engineer

RJM
25-1-19
Dy. Executive Engineer

// Approved //
[Signature]
Chief Engineer-II
RWS&S, Gollapudi
Vijayawada.

SCHEME:
DWG. NO. 2