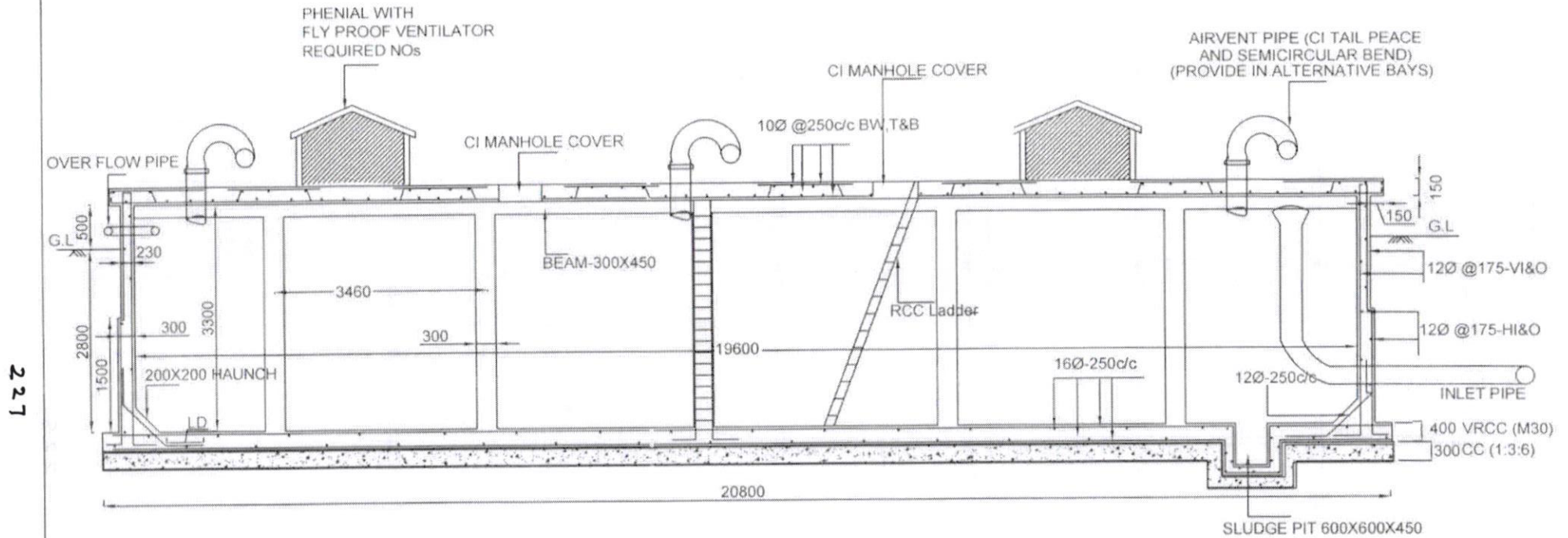
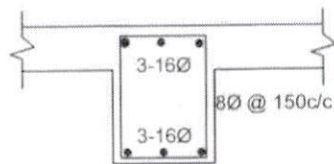


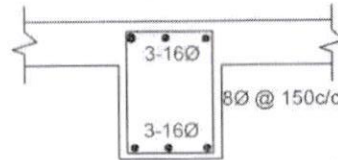
900 KL CAPACITY SUMP



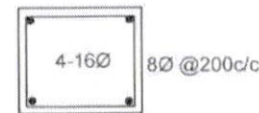
SECTION OF -900 KL SUMP



BEAM
300X450
AT SUPPORT



BEAM
300X450
AT MIDSPAN



COLUMN
300X300

PBL
Asst Executive Engineer

25-1-19
Dy. Executive Engineer

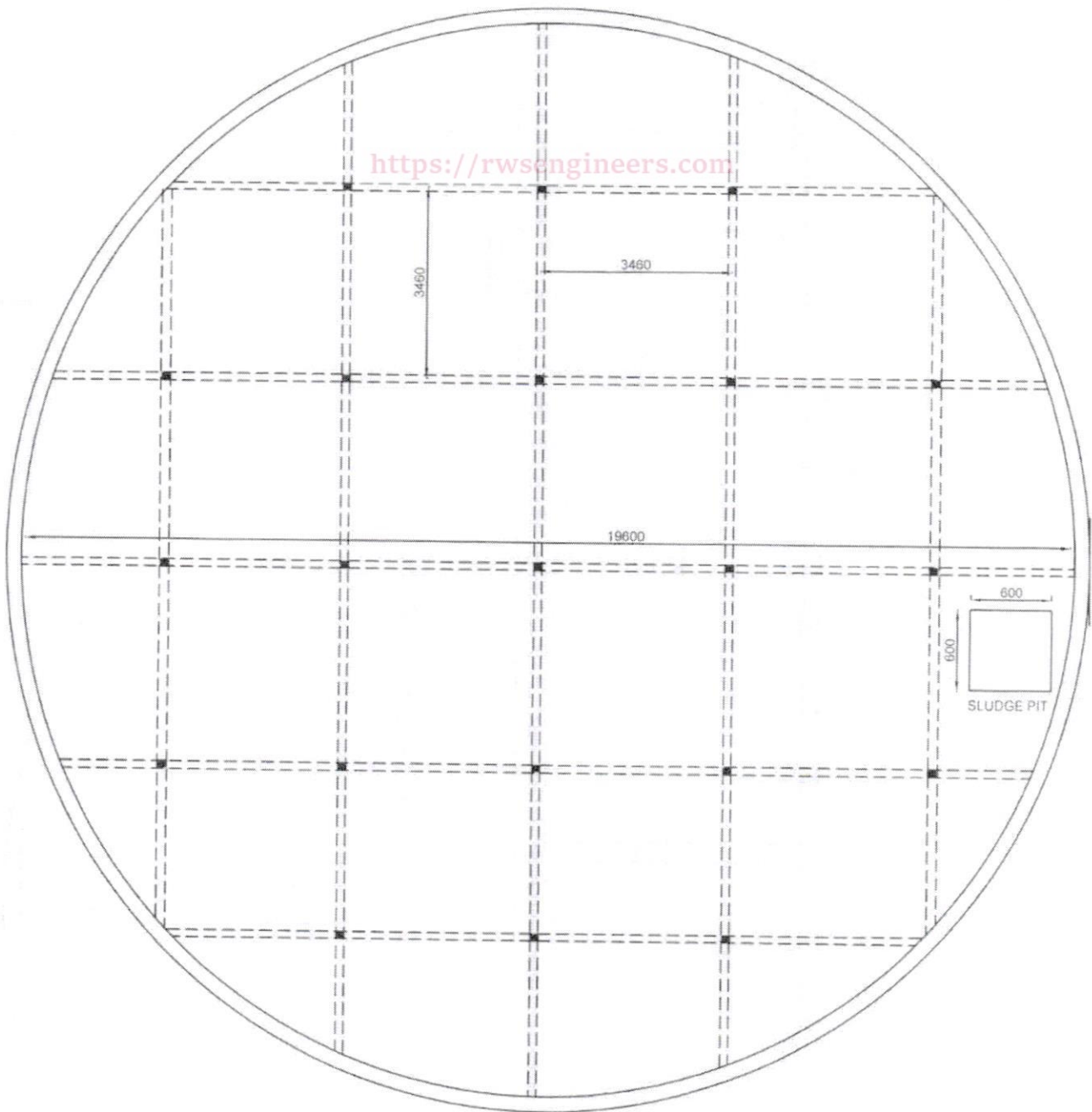
//Approved//
Chief Engineer-II
RWS&S, Gollapudi
Vijayawada.

SCHEME:

LOCATION:

DRG NO.

<https://rwsengineers.com>



NOTE

1. ALL DIMENSIONS ARE IN 'MM'
2. MATERIALS:
CONCRETE: M30
STEEL: Fe-415
3. PROVISION OF IS: 456-2000, IS: 3370 (PART I TO IV) SHALL BE FOLLOWED
4. FLOW ARRANGEMENT, MAN HOLE, VENTILATOR SHOULD BE PROVIDED
5. THE SUMP TOP SLAB IS NOT DESIGNED FOR ANY VERTICAL LOAD AND IT SHOULD BE PROTECTED AROUND BY SUITABLE MEANS
6. $SBC \geq 5T/Sqm$

PLAN OF -900KL SUMP

Note: provide sand bed as per site conditions and verify the uplift condition before grounding the work, if depth of water table < 1.50m below GL

BR

Asst Executive Engineer

P.S.
25.1.19

Dy. Executive Engineer

//Approved//

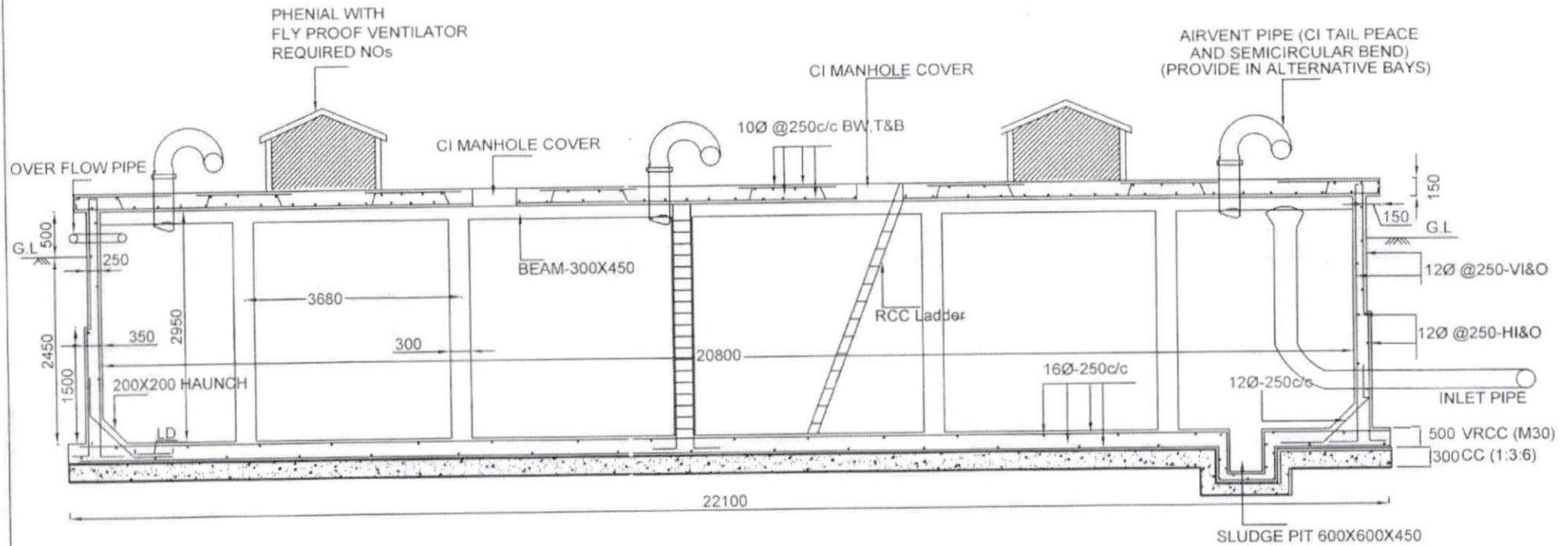
Chief Engineer-II
RW&S, Gollapudi
Vijayawada.

SCHEME:

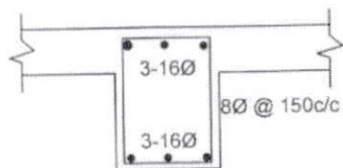
LOCATION:

DRG NO.

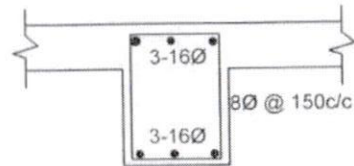
900 KL CAPACITY SUMP



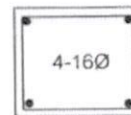
SECTION OF -900 KL SUMP



BEAM
300X450
AT SUPPORT



BEAM
300X450
AT MIDSPAN



COLUMN
300X300

Asst Executive Engineer

Dy. Executive Engineer

//Approved//

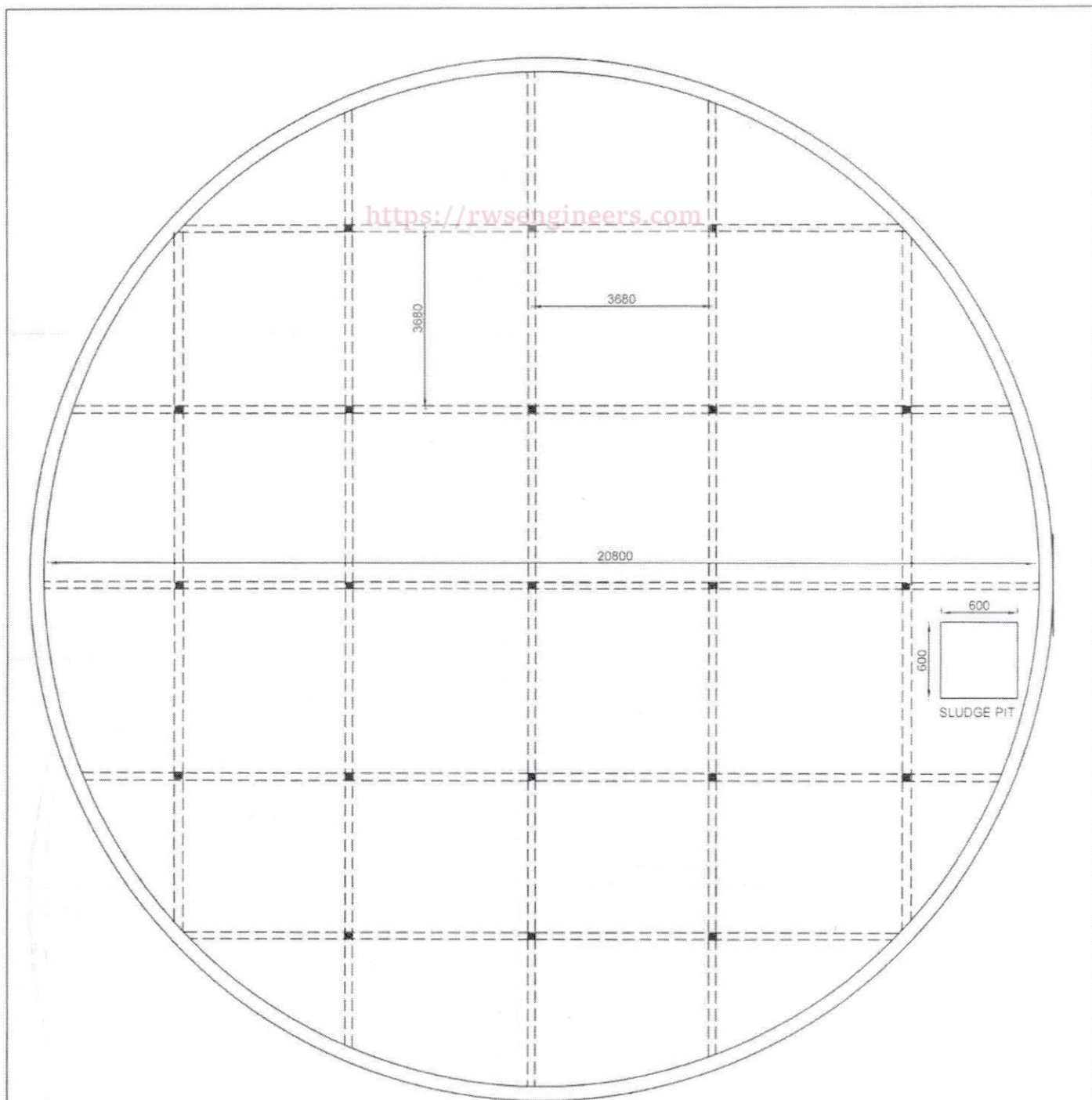
Chief Engineer-II
RWS&S, Gollapudi
Vijayawada.

SCHEME:

LOCATION:

DRG NO.

<https://rwsengineers.com>



NOTE

1. ALL DIMENSIONS ARE IN 'MM'
2. MATERIALS:
CONCRETE M30
STEEL : Fe-415
3. PROVISION OF IS:456-2000, IS:3370(PART I TO IV)
SHALL BE FOLLOWED
4. FLOW ARRANGEMENT, MAN HOLE, VENTILATOR
SHOULD BE PROVIDED
5. THE SUMP TOP SLAB IS NOT DESIGNED
FOR ANY VERTICAL LOAD AND IT SHOULD BE PROTECTED
AROUND BY SUITABLE MEANS
6. SBC $\geq 5T/Sqm$
7. Sump is designed for uplift.

PLAN OF -900KL SUMP

Note: provide sand bed as per site conditions
and verify the uplift condition before grounding
the work, if depth of water table $< 1.0m$ below GL

[Signature]
Asst Executive Engineer

[Signature]
25.1.19
Dy. Executive Engineer

//Approved//
[Signature]
Chief Engineer-II
RWS&S, Gollapudi
Vijayawada

SCHEME:

LOCATION:

DRG NO.